



# MOUNT PROSPECT Village News

SUMMER 2012

You won't want to miss this year's Downtown Block Party - we've added Friday night and extended hours on Saturday. Plus we have some of the hottest bands around!

**MOUNT PROSPECT BLOCK PARTY**

**July 27 & 28**

**Sixteen Candles  
Friday 7/27**



**Mike & Joe  
Saturday, 7/28**



## Downtown Block Party Taking it Up a Notch

On Friday and Saturday, July 27 & 28, the Village of Mount Prospect and the Mount Prospect Chamber of Commerce are sponsoring the 13th Annual Downtown Block Party. The party will be held at the intersection of Emerson Street and Busse Ave. in downtown Mount Prospect. New this year - the addition of Friday night, and expanded Saturday hours in addition to a really hot lineup of bands. The party begins on Friday at 5:00 p.m. and goes until 11:00 p.m. Saturday opens at 11:00 a.m. and closes at 11:00 p.m. Admission is free.

Mount Prospect's favorite restaurants will be on hand for a taste of Mount Prospect. FREE Kids' Activities will be held from 11 a.m. - 7 p.m. and will include a Moonwalk, Climbing wall, Pony Rides, Mini Ferris Wheel, Trackless Train, Mini-Merry-Go-Round, Face Painting, Stilt Walkers and more!

Free Parking for the event is available in the East Commuter Lot (Northwest Highway) and in Village Hall Parking Deck (Emerson Street). *Continued on Page 5.*

### IN THIS ISSUE:

News & Events .....	2-3
Upcoming Events .....	4-7
Summer Storm Safety .....	8

Leave Fireworks to the Professionals.....	10
School Supply Drive.....	11
Con Artist Alert.....	12

Village Urges Tree Plantings.....	14
Business News.....	18-19



# News, Notes and Reminders

## Did You Purchase Your Vehicle Sticker?

The deadline for displaying 2012-2013 vehicle stickers was April 30. The Police Department is now issuing citations to owners of locally registered vehicles on which 2012-2013 vehicle stickers are not displayed. The penalty will not initially apply to new Village residents or to residents who have purchased replacement vehicles after May 1. In either case, you have 30 days to purchase your sticker. During the grace period, proof of purchase or move-in date will be required to assure that a penalty is not imposed. If you change vehicles during the year, a transfer is required. Call the Finance Department at 392-6000 for more information.

## Citizen Emergency Preparedness Training

The Mount Prospect Fire Department is offering a free 20-hour Emergency Preparedness course that will help you, your family, and your neighbors in the event of a local disaster. This course is designed to give you basic knowledge when a disaster strikes. The training will provide a basic overview on emergency preparedness, fire suppression, basic first aid, light search and rescue and terrorism preparedness at NO COST.

This year the fire department is offering this seven-week training course on Wednesday evenings beginning October 3 and ending on November 14. The classes will be held from 6:30 p.m. until 9:30 p.m. at Mount Prospect Fire Station 14 located at 2000 East Kensington Road.

For further information please contact Jim Miller at the Mount Prospect Fire Department (847) 818-5253 or email [jmiller@mountprospect.org](mailto:jmiller@mountprospect.org).

## Passport Services Discontinued

Effective June 30, 2012 the Village of Mount Prospect will no longer serve as a passport acceptance facility. Please go to the U. S. Department of State passport web site to find the nearest passport acceptance facility; [tavel.state.gov](http://tavel.state.gov). (The Mount Prospect Post Office is a passport acceptance facility.)

## Don't Block the Sidewalk

The heat of summer is here and people will be taking walks throughout their neighborhoods. We need to remember to keep sidewalks free and clear to not obstruct a pedestrian's pathway. It can be dangerous for a small child or an elderly person to have to leave the sidewalk to get around an obstruction. Please keep all lawn equipment, bicycles, toys, and vehicles clear of the sidewalk. Anyone found to be in violation of obstructing the sidewalk can be issued a citation for each offense.

## No Parking

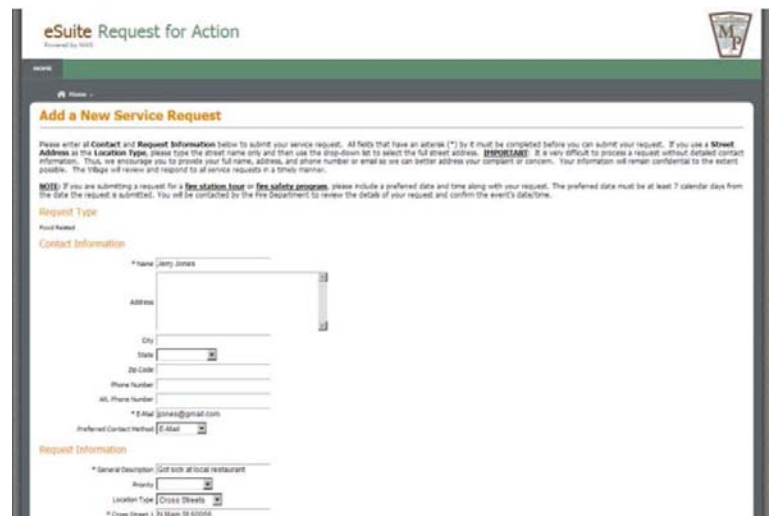
Reminder - no parking on Village streets from 2 a.m. to 6 a.m.

## eService Request

In March, the Village went live with an on-line application known as eSuite Request for Action. This web portal, available 24 hours/7 days a week via a click of a button on the Village's homepage, permits you to submit any issues and concerns you may have related to building construction, food safety, landlord/rental, planning and zoning, and property maintenance.



Once you have selected a service request type on the portal's main screen, just submit your contact information and nature of your request. It's that easy! Don't forget to save your Request Tracking Number and Access Code so you can see the status of your request on-line.





Green  
Mount Prospect

## Green Fair : August 12

Ever wanted to learn how to garden, but didn't think you had a green thumb? Confused by composting or think it's too much work? Are you intimidated by canning vegetables or making jam? Local experts will be at this year's Mount Prospect Green Fair on Sunday, August 12 from 8 am through 1 pm to answer your questions and give you tips to make it easy and fun. Hosted in conjunction with the Mount Prospect Lions Club Farmers' Market, this year's Green Fair will also have two scheduled story times for kids and other learning opportunities. Plans also include a bike safety and maintenance area to help new bicyclists ride safely in the community. A raffle will be available with prizes including a produce basket and rain barrel. So come on down and learn how to be more green!

The Mount Prospect Farmer's Market is located at the Mount Prospect Train Depot West Commuter Parking Lot (corner of Northwest Hwy & Rte. 83).

## Dan Chiras - Sustainable Development: August 8

On August 8, 2012, at 7:00 pm, at the Mount Prospect Public Library, author and green building expert Dan Chiras will explore our energy addiction to fossil fuels and discuss what it will take to address the results of our energy dependence. Dan Chiras, PhD, is the author of numerous books and articles on green building, renewable energy, and sustainable living. For over 30 years, he has taught college-level courses on these topics and has taught numerous workshops on passive solar design, electric car conversion, wind energy, and green building. Go to [www.mpppl.org](http://www.mpppl.org) to register now - seats are limited!

The Green Fair and presentation are sponsored by the Mount Prospect Sustainability Education Program, which is presented in partnership with the Village of Mount Prospect and the Mount Prospect Public Library and funded through the U.S. Department of Energy's Energy Efficiency and Conservation Block Grant (EECBG).



## Electrical Supplier Update

The Village Board approved a two year contract on June 5 with First Energy, pending final contract acceptance, that will lower the current ComEd rate of 8 cents per kilowatt hour to 4.65 cents per kilowatt hour. All residents who currently purchase their power from ComEd will enjoy the reduction. Residents will receive a mailing from the Village in July. This material will include the instructions for the opt out option of the program if residents so chose to exercise that option. The residents will get an additional mailing from ComEd three weeks after the opt out mailing just confirming the resident wants to change suppliers.

Basically residents do not have to do anything to take advantage of the new rate. However, if a resident already has an alternative electrical supplier other than ComEd they will NOT receive an opt out letter since the list of customers who will receive the mailing only includes current ComEd customers. Residents interested in changing from their current alternative supplier to the new Village rate will have that option, but will have to opt in. The opt in information will be available through the Village web site once the opt out letters are mailed out within the next 30-60 days. Residents should check back regularly with the Village web site since there will not be a special mailing to customers who previously opted out.

Furthermore, residents have the voluntary option to accept the green energy rate of 4.73 cents through the opt out process; however, this green rate is purely voluntary and will not be levied unless the resident wants to accept that rate.

Once the deadline closes for opting out the residents will see a reduction in their electrical rates, most likely around the September billing. The bills will still come from ComEd, but the energy portion of the bill will be different. Billing questions and outage notifications will still be directed to ComEd.

# Mark Your Calendar for these Community Events/Programs



## August 11: Susan G. Komen 3-Day Walk Adopt-A-Block

Join the Mount Prospect Special Events Commission's Susan G. Komen 3-Day Walk Adopt-A-Block. On August 11, the second day of the Walk, participants will be passing through Mount Prospect. You or your group will be assigned a block along the way to show your appreciation to the walkers. For more information contact Tarina Wimmer at 847/269-6277 or email [thinkpinkinmp@gmail.com](mailto:thinkpinkinmp@gmail.com).

## August 18: Family Bike Ride

Presented by the Mount Prospect Special Events Commission, Mt. Prospect Park District and River Trails Park District, the event starts at Melas Park. 9 am check in, 9:30 ride. 3 paths...1 mile, 5 miles, 10 miles. First 200 pre-registered bikers will receive t-shirt at check in. Register at River Trails Park District or Mt. Prospect Park District, or email [tvanopdorp@rtpd.org](mailto:tvanopdorp@rtpd.org).

## September 9: Marché Français

Join us September 18 for a special day at the Mount Prospect Farmers Market sponsored by the Sister Cities Commission. We will have "French" themed vendors - in addition to the wonderful regular Farmers' Market vendors. For details, go to [www.mountprospect.org](http://www.mountprospect.org).

## September 22: Fire Department Open House

The open house will be held from 10:00 a.m. to 2:00 p.m. at the Police and Fire Headquarters building located at 112 E. Northwest Hwy. A hot dog lunch will be provided by the Mount Prospect Kiwanis. Fire prevention activities, demonstrations and information for all age groups will be available. Visit [www.mountprospect.org](http://www.mountprospect.org) for more information.

## Butterflies Take Flight Public Art Project

From June - October, Rainbow Hospice will have on display a public art project throughout Mount Prospect, entitled "Promises Take Flight." The installation will feature decorated fiberglass butterflies (think Cows on Parade - but with butterflies!). For more information and a map of butterfly locations, go to [experience.mountprospect.org](http://experience.mountprospect.org).

## Lions Club Farmers' Markets Sundays through Oct. 21

Mount Prospect Lions Club Farmers' Market will be held every Sunday through Oct. 21 from 8:00 a.m. - 1:00 p.m. at the Mount Prospect Train Depot West Commuter Parking Lot (corner of Northwest Hwy. & Rte. 83). For a wonderful array of fruits, vegetables, herbs, flowers and other goodies, stop by and check it out!

## Bluesmobile Cruise Nights Saturdays, May 19 - Sept. 29

Sponsored by the Downtown Merchants Association. Located in the Metra West Lot at Northwest Highway and Route 83, 6:00 p.m. to 9:00 p.m. See [www.mpdma.com](http://www.mpdma.com) or "Like" us on Facebook - [www.facebook.com/mpdma](http://www.facebook.com/mpdma) for the details.

## 4th of July Parade

The parade will take place on Wednesday, July 4, beginning at 1:00 p.m. The parade, begins at Prospect Ave. and Emerson Street, proceeds northwest on Prospect to Central Road then west on Central to Melas Park.

## July 3 - 8: Lions Village Festival & Fireworks - See Insert

## July 14: Sister Cities French Festival

Bring the whole family to the Mount Prospect Public Library on July 14 from 11 AM to 12 Noon for a festive celebration to celebrate Bastille Day and in honor of Mount Prospect's Sister City of Sèvres, France. Register at [www.mppl.org](http://www.mppl.org) or by calling 847/253-5675.

## July 27 - 28: Downtown Block Party See Pages 1 & 5

## July 30: Do-It-Yourself Sousa

Join the Mount Prospect Special Events Commission and the Community Band at 7:30 pm Veterans' Memorial Bandshell at Lions Park for this patriotic celebration of music. Any musician, 12 yrs of age and older is invited to participate in this very special event. Registration information available at [www.mountprospect.org](http://www.mountprospect.org). For more information, call 847/398-2450 or 847/640-1000 x 229.

# DOWNTOWN BLOCK PARTY SCHEDULE

Scheduled entertainment includes:

## Friday, July 27

- 5:30pm**      **Diving for Dynamite**
- 7:00pm**      **Rod Tuffcurls & The Bench Press**  
Rod Tuffcurls & The Bench Press will open the party up on Friday and make sure you have a good time. Playing everything from the Beatles and the Monkees to Springsteen to the Violent Femmes and New Order.
- 9:00pm**      **Sixteen Candles**  
16 Candles – one of Chicago's hottest cover bands headlines Friday night's lineup. Established in 2006, 16 Candles brings you all the great 80s songs you love to life in full force. Their attention to detail and commitment to entertainment captivates audiences. Playing everything from Erasure to Journey to INXS to Prince.

## Saturday, July 28

- 12:00pm**      **Impulse Dance Ensemble,**  
Mount Prospect Park District
- 12:30pm**      **Ballet Expressions,**  
Mount Prospect Park District
- 1:00pm**      Green and White Soccer Club
- 1:30pm**      Mt. Prospect Cheerleading Club
- 2:00pm**      Midwest Shotokan Karate
- 2:30pm**      Firefighter Frank Puppet Show  
Mount Prospect Fire Department
- 3:00pm**      Children's Golf, River Trails Park District
- 3:30pm**      Mount Prospect Public Library Storytime
- 5:00pm**      **Stockwood**  
Stockwood offers 'A Genuine Tribute to The Beatles' despite their young ages. Stockwood has been surprising audiences for over eight years.
- 7:00pm**      **Frye Daddy**  
Frye Daddy is a rock/fusion/jam band with influences that range from blues, reggae, jazz and rock
- 9:00pm**      **Mike and Joe**  
Since their first public performance in Bloomington, Indiana in 1991, Mike and Joe have become one of the most popular cover bands in the Midwest. Mike & Joe play tunes from Fall Out Boy, Coldplay, The Killers, Green Day, Snow Patrol, Maroon 5, U2, Gavin Degraw, Sublime, Rusted Root, Panic! at the Disco, Dave Mathews Band, Pearl Jam, John Mayer, 311, Weezer and more!

For more information on the Downtown Block Party, check out our web site, [www.mpblockparty.com](http://www.mpblockparty.com), our Facebook page ([facebook.com/mtprospectparty](https://facebook.com/mtprospectparty)) or contact the Mount Prospect Chamber of Commerce at 847/398-6616.



# MOUNT PROSPECT DOWNTOWN BLOCK PARTY

## EMERSON ST & BUSSE AVE



# Mark Your Calendar for these Community Events/Programs

## Mount Prospect Public Library

[www.mppl.org](http://www.mppl.org)

### MPPL Foundation Concert: Goin' Places With the Encore! Singers

**Monday, July 16, 7:30 - 8:30 p.m.**

Music inspires us to see new places, to travel, or simply enjoy the journey. Encore!, the 2011 winner of the national vocal talent competition, SING!, will perform some great travel-inspired hits such as "We Are the World," "Over the Rainbow," "Come Fly With Me," and more. Registration is required. To sign up, visit [www.mppl.org](http://www.mppl.org), call 847/253-5675, or stop by the Library.

### Macaroni Soup! With Miss Carole

**Saturday, August 18, 11 - 11:45 a.m.**

Join the high energy of Miss Carole as she sings and dances to songs such as "Sticky Bubblegum" and "B-A-L-O-N-E-Y." With more than 20 years of international performances, Miss Carole has earned Parent's Choice awards, and her CDs are always on the storytime menu at the Library. Come move and groove to her music! Registration is required. To sign up, visit [www.mppl.org](http://www.mppl.org), call 847/253-5675, or stop by the Library.

### A Must-Have for Back to School

Students, don't forget to add a Mount Prospect Public Library card to your supply list for school! Library cards are free to anyone who resides within the Village limits of Mount Prospect. Bring in two pieces of identification, one with your name and another with your name and current address, to the Registration Desk to obtain a card. Youths under eighteen years of age must have a parent or guardian's signature before receiving a card.

## Mount Prospect Historical Society

[www.mtphist.org](http://www.mtphist.org)

### The 3rd Annual Mount Prospect Historical Society's Downtown History Crawl: Featuring Prospect Avenue "A Carefree Night of Frivolity, Food and Fun Downtown" Friday August 10, 2012, 4-10 p.m.

**DISCOUNT PRE-SALE TICKETS AVAILABLE AT  
[www.mtphist.org](http://www.mtphist.org)**

The Mount Prospect Historical Society's 3rd annual downtown "History Crawl" is scheduled for Aug. 10th. Mark your calendars for Friday evening for this entertaining tour of Mount Prospect's historic downtown restaurants, watering holes, shops and buildings. There will be food, drink and giveaways all night long, as well as an opportunity to "meet" some of our community's founding citizens. Afterwards, stay up late with live entertainment. **DISCOUNT PRE-SALE TICKETS AVAILABLE AT [www.mtphist.org](http://www.mtphist.org)**

## Mt. Prospect Park District

[www.mppd.org](http://www.mppd.org)

### Free Summer Concerts at Lions Memorial Park

The Mt. Prospect Park District concert season kicks off Thursday, June 14 at 7:30pm in Lions Memorial Park. The very popular group 7th Heaven will open the series. This band has opened for Bon Jovi and always provides a night of rockin' music.

The Mt. Prospect Community Band, under the direction of Ralph Wilder, begins its concert series on Monday, June 18 at 7:30pm with Mt. Prospect's Got Young Talent. You won't want to miss this amazing night of entertainment.

For a complete listing of Monday and Thursday concerts, visit [www.mppd.org](http://www.mppd.org) or consult the summer brochure.

### North Pole Beach Party

**Meadows Pool, 1401 W. Gregory Street**

**Date July 25, Time 6-9pm**

Join us for a great day at the North Pole. Try your skill at the Dunk Tank, ride the slide into the Arctic Ocean and participate in games and contests. You won't want to miss this super day of Polar fun! Radio Disney will be on hand for a good old fashioned pool party. Visit [www.mppd.org](http://www.mppd.org) for and details. Fee: \$6R/\$8NR Pool Pass Holders Receive \$1 Discount

## River Trails Park District

[www.rtpd.org](http://www.rtpd.org)

### Wednesday Summer Specials

Rob Roy Golf Course - 505 E Camp McDonald Rd - Prospect Heights 847-483-5099

#### Family Package \$97-Valued at \$135

Includes 9 holes-green fee, pull carts, fried chicken lunch, mashed potatoes, cole slaw and soda for 2 adults and 2 children. Add'l. person (9years and up) -\$24

#### Senior Golf Day (62 years and up)

Buy one round and get a gas cart for FREE!! Valid Wednesdays 9am-2pm

### Annual Trusty the Turtle Race (Labor Day FREE Event) September 3, 11:30am Woodland Trails Park

Sponsored by River Trails Park & Recreation Foundation

1st Place \$300, 2nd Place \$125, 3rd Place \$75

Next 30 Winners will receive gift cards. You do not need to be present to win! Sponsorship Packages Trust "y" the ONE \$5 Trusty's Cluster (6 turtles) \$25, Trusty's Twenty (20 turtles) \$75



## Mt. Prospect Community Band Monday Night Concerts

The Mt. Prospect Community Band proudly announces its Summer Concert Series held each Monday evening at 7:30 p.m. at the beautiful Veterans Memorial Band Shell in Lions Center. Refreshments, sandwiches, soft drinks and water are available at our own "Little Ravinia" and we urge everyone to attend for a wonderful evening of beautiful music - and bring a lawn chair!

### July 2 - "A Patriotic Evening with the Messmers"

Bringing back Mt. Prospect's "First Couple of Song" Wayne and Kathleen Messmer will, once again, astound everyone with their beautiful voices in a concert of great show tunes and patriotic favorites.

### July 9 - "How Much Is That Doggie?"

This summer, we are inviting YOU, the audience, to bring your well-behaved and leashed dog to the concert! There will be Doggie Music, Doggie Toys, and local pet shops will display their wares and services. This will be great fun for the pets and their owners! Woof!

### July 16 - "Radio Station WNIB Revisited"

Featuring Chicago's radio legend, WDCB's Ken Alexander, and Scott Thomas, formerly with WFMT. Both these veterans of WNIB will reminisce and reflect about "old time radio" in Chicago.

### July 23 - "Singin' & Swingin' with the Big Bands"

Featuring our talented "girl singer", Leah Novak, the music will be sure to get your toes tapping and fingers snapping - and we invite you to dance!

### Monday, July 30 - "Do-It-Yourself Sousa"

John Philip Sousa enactor, Dr. Michael Golemo will, once again, guest conduct the band in a good old fashioned "All American Concert" to conclude the summer series of "Musical Mondays".



# FRIDAY CONCERTS ON THE GREEN

6PM • THE GREEN @ VILLAGE HALL  
50 S. EMERSON ST.

## FEATURING

June 1	Friday Night Lawn Jockeys
June 15	Diving For Dynamite
July 6	Suburban Cowboys
July 20	Stache
Aug. 3	Mosquitos Jam Band
Aug. 17	A Thousand Julys
Sept. 7	Jack Straw
Sept. 21	The Committee Band

Pick up a picnic dinner at one of our downtown restaurants or grab a bite after the concert. Bring chairs/blankets.

**cravepizza**

**N & P Novak & Parker**  
HOME APPLIANCE SINCE 1913



[www.experiencemountprospect.org](http://www.experiencemountprospect.org)





# “Stormchaser” Season

## Swimming Pools

The Building Division receives many phone calls regarding swimming pools and landscape ponds. In accordance with Village Code a permit is required for any swimming pool, hot tub or spa, or man-made pond over 24 inches in depth. Pools and ponds are reviewed by the Building Division, Planning Division, and Engineering Department. This means that plan review can take up to thirty (30) business days for review. Please contact the Permit Coordinator with further questions at 847-818-5396.

## Swimming Pool Fences

Village Code does require that fences and gates at least four feet (4’), but not greater than five feet (5’), in height must completely surround swimming pools. Swimming pools having a raised deck at least four feet (4’) above grade do require fencing but the fence may be placed as follows:

- (1) Along the perimeter of the pool walk areas; or
- (2) Along the perimeter of the lot as described in code section 14.301.

Check out our website!

Be sure to check out the Building Divisions portion of the website for valuable information on permits, codes, and current building news!



“Storm-chaser” season has arrived. Spring and Summer can bring storms that damage your home and “chasing” those storms are contractors who use various techniques to gain the confidence of home owners. In general, consumers should beware when a home repair contractor:

- contacts you or comes to your home uninvited (door-to-door visits offering home repair);
- tells you that you need to make repairs immediately or your safety may be in danger;
- pressures you to sign papers today or talks too quickly, attempting to confuse you;
- quotes a price that’s out of line with other estimates;
- offers to drive you to your bank to withdraw funds to pay for his or her work;
- can be reached only by leaving messages with an answering service;
- drives an unmarked vehicle or has out-of-state license plates; or
- asks you to pay for the entire job up front.

### Finding a Contractor

You should find out as much as you can about a contractor before hiring him or her. You can do this by calling the Illinois Attorney General and the Better Business Bureau. Get written estimates from several firms – but don’t automatically choose the lowest bidder. Ask the contractor if subcontractors will be used on the project. If yes, ask to meet them, and make sure they have current insurance coverage and licenses. Also ask them if this contractor has paid them on time in the past.

## Summer Storm Safety

- Do not go near any downed power lines – call 911 if you see any downed, live electric wires or if you are in danger
- Take caution about “storm chasing” contractors – all contractors require a Mount Prospect Contractor License and all roofers require a state license
- Contact your insurance company if you have experienced property damage
- A permit IS required to replace a roof or repair a roof that is damaged over 100 square feet
- No permit is required to remove trees on private property damaged by the storm PLEASE NOTE: Parkway Trees are Village Property
- No permit is required to install temporary tarps or board up
- Contact Comed at 800-334-7661, select Option #1 or [www.comed.com](http://www.comed.com) if you are experiencing a power outage.

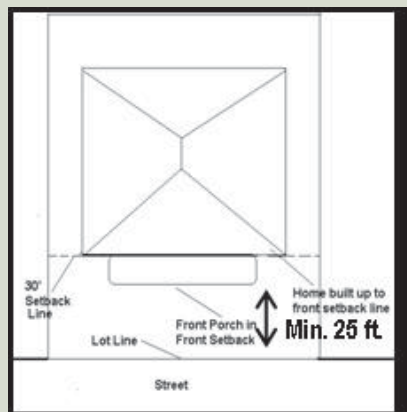




# Front Porch Guidelines

The Village of Mount Prospect is very supportive of proposals to improve a home by adding a porch. Porches can serve as a desirable entrance and increase the aesthetics of the front elevation of a home. In the past few years, the Village has made the approval process easier for residents desiring to install a porch on their property. If the porch meets all applicable zoning setback and other bulk regulations a building permit is all that is required. For homes that are currently constructed up to the required front yard setback, Conditional Use approval is required prior to the issuance of a building permit for the porch.

A porch can be added to the front of a home, but requires a Conditional Use if it breaks the “front yard setback”, an invisible line, typically 30 feet back from the property lot line. With approval of a Conditional Use, a porch may encroach to no more than five feet (5’) into the required front yard and requires the front porch to be unenclosed.



To ensure that the porch meets the standards for a Conditional Use, you must file an application with the Community Development Department. Applications are available on the Village website and at the Community Development Department in Village Hall.

The Conditional Use review process for an unenclosed porch in the front yard is an administrative review process that includes: 1) Staff review of the Conditional Use Application, 2) A public hearing, and 3) Approval by the Director of the Community Development Department. This can take up to 30 days from submittal.

If you are interested in installing an unenclosed porch on your home and have questions regarding the Conditional Use process you can contact the Community Development Department’s Planning Division at (847) 818-5328. For questions about construction and building codes contact the Building Division at (847) 870-5675.

## Fire Pits at Home

The Building Division frequently receives calls regarding the use of the popular portable (non-permanent) fire pits. The Village currently does not have regulations regarding these fire pits; but must advise that the manufacturer’s specifications and instructions be followed carefully. Burning of trash, yard waste, and other debris is NOT permitted. Again, you should carefully follow ALL manufacturer instructions when using these fire pits. Additional questions regarding fire pit safety can be directed to the Fire Prevention Bureau at 847-818-5253.

Permanent or built-in BBQ’s, grills, outdoor fireplaces, and fire pits DO require review by Village Staff. These items are reviewed on a case-by-case basis. Please contact the Building Division at 847-870-5675 with questions regarding these types of projects.



# News and Reminders from the Fire Department



## Leave the Fireworks to the Professionals

Each year during the Fourth of July holiday thousands of people, mostly children, are seriously injured in fireworks-related incidents. Nearly 2,000 fireworks-related eye injuries occur each year. About one-third of these eye injuries result in permanent eye damage. Children and youth under 19 sustain 44 percent of these injuries. Sparklers accounted for one-third of the injuries to children under five years old. Rockets and bottle rockets were related to more than two-thirds of fireworks-related injuries.

Because of the hazards and injuries associated with fireworks, the Village of Mount Prospect prohibits all types of fireworks including sparklers. Sparklers reach temperatures of up to 1800 degrees Fahrenheit and remain hot enough to cause serious burns even after they are extinguished. Fireworks are also especially dangerous to children because they entice children to play with matches.

The Mount Prospect Fire Department wishes all a happy and safe 4th of July celebration and requests everyone to leave the fireworks to the professionals and enjoy the professional fireworks display at Melas Park.

## Emergency Preparedness Kit

Your family should have certain essential items on hand to ensure you are prepared for a number of emergency situations. Building a kit will ensure that you can meet the needs of your family for three days. Every family is different and your kit will be too! There are, however, basic items that every family will need in their kit, these can be found below. Once you have built your kit make sure you pick a storage place that everyone in your family can easily access. Your kit should be portable in the event of an evacuation.

- One (1) gallon of water/day/person
- Non perishable food items (including high protein items like tuna, peanut butter and energy bars
- Blankets for each person
- Notebook and pen
- Small tool box
- Change of clothing and footwear for each person (update for the season changes)
- First aid kit
- Flashlight with extra batteries
- Radio & NOAA weather radio
- Road maps
- Matches in a water tight container
- Respiratory mask (N95)
- Hand sanitizer (alcohol based)

For additional information about how to prepare for disasters and emergency preparedness kits contact the Mount Prospect Fire Prevention Bureau at (847) 818-5253 or visit [www.redcross.org](http://www.redcross.org) or [www.ready.gov](http://www.ready.gov).

## Candle Safety

In 2010, U. S. fire departments responded to an estimated 9,600 home structure fires that were started by candles. These fires caused 90 deaths, 820 injuries and \$370 million in property damage. The Mount Prospect Fire Department and the National Fire Protection Association recommend the following guidelines when using candles at home:

- Blow out all candles when you leave the room or go to bed. Do not leave candles unattended.
- Put candle holders on a sturdy, uncluttered surface.
- Keep candles at least 12 inches away from anything that can burn.
- Don't burn a candle all the way down. Put it out before it gets too close to the holder or container.
- Never use a candle if oxygen is used in the home.
- Never leave a child alone in a room with a burning candle. Keep matches and lighters up high, out of the reach of children.
- Remember that a candle is an open flame and can easily ignite anything that burns.

The Mount Prospect Fire Department recommends the use of battery powered candles. For more information or any questions regarding the use of candles, smoke alarms or general fire safety, please contact the Mount Prospect Fire Prevention Bureau at (847) 818-5253.



# Social Services Assistance



## Identifying People With Special Needs

The Village wants to identify residents with special needs who may need extra help in times of a widespread disaster. The Human Services Dept. has established a special tracking program that will identify these people at the time of a recognized disaster and will pass the information on to Emergency personnel who will determine how and when the assistance will be given to these individuals. It is important to know that all residents need to have a plan in place to keep themselves safe until personnel and/or volunteers can reach them. This includes people with special needs.

If you or a family member are wheelchair or bed bound; blind or visually impaired; deaf or hearing impaired; on a ventilator; have some form of dementia/memory loss and/or Alzheimer's; a dialysis patient; an organ transplant recipient; and/or autistic, and would like to be placed in the database, please call 847/870-5680. Please have the following information when you call: name, address, date of birth; at least two emergency contact names and numbers, and type of need.

## Senior Leisure

### Driver Refresher Class

The next two Secretary of State's Rules of the Road Classes will be held on Wednesday, July 25 and September 26, 2012 at 1:30 p.m. at the Mount Prospect Village Hall Community Center, 50 South Emerson. This free class is intended as a refresher for senior citizens who are due to renew their Illinois State Driver's Licenses. Registration is required. Please call 847-870-5680.

### Financial Planning Classes

If you are worried about outliving your retirement income, attend our financial planning classes. First session will be about generating income using bonds and annuities, August 7 & 14. Other topics include "Taking Stock in the Market," August 21 and "Family Matters with Long Term Care," August 28.

Classes will be held at 7:00 p.m. in the Village Hall 1st floor Community Room, 50 S. Emerson Street, Mount Prospect, on Tuesday evenings in August. Please call 847-870-5680 to register.

### Senior Advisory Annual Indoor Picnic

All seniors are invited to attend the annual Senior Advisory Council Indoor Picnic to be held on Tuesday, August 7, 2012 at 12:00 noon in the Mount Prospect Village Hall Community Center. The picnic menu will feature hot dogs, potato salad, lemonade, dessert and coffee for a nominal fee. Bingo will follow the lunch. Come join in the fun at one of our most popular events. Bring your friends and neighbors, too!

## Nursing/Health Services

### Memory Loss

Rainbow Hospice and Palliative Care will be presenting their program "Making Sense out of Memory Loss" on Thursday July 12, 2012 from 10am -12pm in the Community Room of the Village Hall, 50 S. Emerson St. Mount Prospect. This presentation will explore memory loss, how and why it occurs, what are the types of dementia, how are they treated and what can be done to help prevent dementia. There is no cost for this presentation and it is open to the public. Please register by calling the Human Services Department at 847-870-5680.

## Community Connections Center

1711 W Algonquin Road, 847/506-4930

### Back-to-School" Supply Drive

The approach of school often means greater financial stress for families already struggling to meet their rent, utility and food costs.

Families with school age children who have recently qualified for the Village's emergency assistance program or emergency food pantry qualify for school supplies through our 'Back-To-School Supply Drive.' Donations of school supplies are being collected July 2 through August 13 at the following locations:

Village Hall at 50 S. Emerson

Hours: Monday through Friday  
8:30 a.m. – 5:00 p.m.

Police and Fire Department Building Lobby at  
112 E. Northwest Highway

Hours: Open 24 hours – 7 days per week

Community Connections Center at 1711 W.  
Algonquin Road

Hours: Monday through Friday  
11:00 a.m. – 7:30 p.m.

If you have any questions about the program, please call the Community Connections Center at (847) 506-4930. Thank you for your support!





# News and Reminders from the Police Department

## Traffic Enforcement “Street of the Week”

The Police Department will be conducting the enforcement "Street of the Week" program where officers concentrate their efforts on particular roadways for a one week period. The following is the list of dates and roadways for the “Street of the Week” program:

- June 25 - Elmhurst Rd./Main St. (RT 83)
- July 2 - Central Rd.
- July 9 - Rand Rd. (RT 12)
- July 16 - Lincoln St.
- July 23 - Northwest Hwy. (RT 14)
- July 30 - Golf Rd. (RT 58)
- August 6 - Burning Bush Ln.
- August 13 - Busse Rd.
- August 20 - Wolf Rd.
- August 27 - Euclid Ave.

## Con Artist Alert

This is the time of year when con artists and other scam artists prey on elderly victims. Con artists will pose as employees of utility companies, building inspectors, roofers, chimney repairmen, driveway seal coaters, body repairmen and handymen. They will quote a price for the work and later demand 5-10 times the quoted price.

In another scenario, Con artists will lure victims out of the house to look at the driveway, roof, chimney, or trees in need of trimming. They will also distract victims inside the home and keep them preoccupied. While outside or distracted in the home, the accomplice will search the home for money and jewelry.

Protect yourself and deal with a legitimate contractor that either you contact or came recommended by a friend. Receive a written quote for repairs to be done prior to the work being started. Do not allow anyone into your home.

Call 911 immediately to report suspicious persons in your neighborhood. Copy down license plate information and a description of the suspicious person’s vehicle if possible.

## Bicycle Safety

Here are some tips to make bike rides enjoyable and safe.

### Bike Inspection

First, check to make sure your bicycle fits you well. Look at the tires for proper air pressure and make sure they are free from defects and debris. Next, check the brakes and finally, check the chain.

### Wear a Helmet

A properly fitted helmet should sit level on your head, should not easily shift from front to back or side-to-side, and the chin strap should be tight and unable to come off.

### Register Your Bicycle with the Police Department

Registering your family’s bicycles with the Police Department greatly raises the chances of getting the bike back if it’s lost or stolen. Bicycles can be registered at the Police Department or online at [www.mountprospect.org](http://www.mountprospect.org).

### Other tips:

- Follow the Rules of the Road
- Ride single file
- Be bright at night - Use a bike light and wear light colored or reflective clothing.



## Make Your Home “Undesirable” to Burglars

Most residential burglaries occur during the daytime when no one is home. A burglar’s goal is to get into a home undetected and with minimal effort. It is impossible to prevent all residential burglaries, but by ‘target hardening’ your home you can make your property less appealing to a burglar.

### Make it Appear as if Someone is Home

When no one is home at your house make it appear someone is there by leaving televisions or radios on inside the home and leave lights on in your home if you will be gone during evening hours when it is getting dark outside or nighttime.

### Install Secondary Locking Devices on all Windows

A simple hole drilled in the frame of windows in conjunction with the use of a pin (i.e. a nail or dowel rod) in that hole will give burglars a more difficult time getting into your home via a window. Make sure that all of your windows and doors are closed and locked when you leave your house. Don’t leave an open invitation to be burglarized.

### Stash Your “Priceless” Items Somewhere Else

Take all “priceless” and valuable items you don’t regularly wear and get them out of your bedroom. Store them in a box or container labeled “Halloween Decorations” or some other regular item and keep it in a basement, crawl space or anywhere else you might keep decorations in your home.

### Keep Records of your Property

Take pictures of all of your valuables. Photograph the whole item, as well as a close up on the serial number if applicable. Keep a record of the make/model and serial number of each item also. Keep these photographs and records somewhere safe.

For more home security tips, check out the Police Department’s page on the Village website at [www.mountprospect.org](http://www.mountprospect.org) under the crime prevention section.

# Make your Home the Solution to Stormwater Pollution

As stormwater flows over driveways, lawns, and sidewalks, it picks up debris, chemicals, dirt and other pollutants. Stormwater can flow into a storm sewer system or directly into a lake, stream, river, or wetland. Anything that enters a storm sewer system is discharged untreated into bodies of water we use for swimming, fishing, and providing drinking water. Polluted runoff is the nation's greatest threat to clean water.

By practicing healthy household habits, homeowners can keep common pollutants like pesticides, pet waste, grass clippings, and automotive fluids off the ground and out of the stormwater. Listed below are ten tips homeowners can adopt to improve the quality of stormwater runoff.

- Cover piles of soil, sand or mulch to stop them from being transported in stormwater. Plan grass where soil is exposed.
- Sweep your sidewalks and driveways rather than hosing them down.
- Put leaves and grass clippings in the compost, on the garden as mulch or mow back into the lawn to recycle nutrients.
- Divert roof water to lawns or gardens where it can safely soak in.
- Keep pesticides, oil, leaves and other pollutants of streets and out of storm drains.
- Keep cars tuned up and repair leaks.
- Wash your vehicle on grass or over gravel. Use as little detergent as you can and pour any leftover soapy water onto the lawn.
- Dispose of household hazardous waste according to the label directions.
- Clean up pet waste, bury it or flush it down the toilet.
- Never dump anything down storm drains! Water from these drains flows untreated to the river.

## Water Your Traps

The traps in floor drains or for that matter, any drains that haven't been used often, will eventually dry out. This may sound harmless enough, but a dry trap can cause a room to fill with sewer gas from the Village's sewer system. Phew!

Also, as the Village continues with the annual sewer rehabilitation using cured-in-place piping (CIPP); the lining process uses a resin which cures during the process to form the new pipe liner. The resin produces an odor and if your traps are not properly maintained, this odor will come into your home. The notice from the contractor that they will be in your neighborhood this summer will ask you to water your traps. This is another reason to check your drains to ensure that they are not dry.

Traps need to have a layer of water sitting in the lower portion to prevent sewer gases from entering your home. You can eliminate these problems with a little fresh water topped with cooking oil. The oil floats on top of the water and seals it against evaporation. Your drain will hold water in the trap much longer.



## Composting Workshops

In collaboration with University of Illinois Extension Master Composter and Arlington Heights resident, Diane Bolash, SWANCC has developed a composting demonstration system. Educators and residents can learn the science behind mixing yard waste, such as leaves, grass and small twigs, with acceptable food scraps, to make a nutrient-rich soil amendment for lawns, gardens, flowers and plants.

The summer workshops include:

- Saturday, July 14, 2012
- Saturday, August 11, 2012

All classes will be held outdoors at SWANCC's Glenview Transfer Station, 1151 N. River Road, from 12:30 to 1:30 p.m. There is no fee to attend, but registration is required. To register, send an email to [mary@swancc.org](mailto:mary@swancc.org) with the preferred date, community you live in and a cell phone number. A follow up confirmation will be sent to you with additional information and directions.



# Village Urges New Tree Plantings

Mindful of the 2012 film “The Lorax”, Mount Prospect officials and staff are encouraging residents to help plant replacement trees in the Village. The movie depicts a world where all the trees have been cut down and not replaced. Dr. Seuss’ fictional character, the Lorax, reminds viewers how important it is for citizens to nurture and care for trees and their environment.

“Our Village has been really hard hit with tree losses in recent years,” stated Forestry/Grounds Superintendent Sandy Clark. “With the poor economy affecting the Village Budget, many removed trees are not being replaced. Fortunately, the Village will receive grant funds this Fall to replace at least some of the parkway ashes being removed due to Emerald Ash Borer”. Clark noted, however, that recent storms and pest problems have caused the Village to fall behind on long-term goals to perpetuate Mount Prospect’s urban forest. “Trees provide us with so many benefits,” Clark continued, “including oxygen production, filtering pollution, slowing stormwater runoff, and increased property values. Clark urges concerned citizens to consider participating in one of the following parkway planting options in 2012.

## Full-Cost Parkway Planting

For those who have a suitable tree planting site, the Village is offering property owners a chance to order a 2 ½” diameter parkway tree. These trees will be hand-selected by Village staff at an Illinois nursery, and planted and guaranteed for one year by a landscape contractor. There will be a choice of eight to ten species and their cost is expected to range from about \$108.00 to \$190.00 per tree. To receive information about the Fall 2012 planting program, property owners must call the Public Works Department at 847-870-5640 no later than August 1, 2012. Note that all orders and payment for Fall planting must be received no later than August 17, 2012. Fall planting will begin in September or October 2012.

## Planting Parkway Trees by Permit

Property owners can also beautify Village parkways by planting trees on their own, but only with an approved Village permit. Planting permits are available through the Public Works Department. There is no charge for the permit. All Village code requirements must be met, including having a suitable planting site, planting a minimum 1 ½” diameter tree, and choosing a species approved in the Village Code. Note that “suitable planting site” means that certain minimum conditions are met, such as spacing between trees and required distances from utilities, driveways, etc. Once the completed permit application is approved, the tree can then be planted. Property owners should be aware that all trees planted on public property, regardless of who did the planting, become the property of the Village. The Village will assume responsibility for the future care and maintenance of these trees.

## Private Property Plantings

With the widespread loss of trees in our community due to insects, disease and past storms, the Village of Mount Prospect encourages property owners to plant on private property. When planting trees, special attention should be given to matching tree species to the available site, as well as planting for diversity. A diversified tree population is ultimately stronger and less susceptible to catastrophic losses when a new disease or insect problem like Emerald Ash Borer arrives. A comprehensive document suggesting diversified tree species suitable for Northern Illinois can be found on the Village website [www.mountprospect.org](http://www.mountprospect.org).



# Emerald Ash Borer Finds Increase Exponentially

Village arborists are now finding Emerald Ash Borer throughout Mount Prospect at an alarming rate. The most commonly observed symptoms include branch dieback, excessive suckering, D-shaped holes in the bark about 1/8" in diameter, and splitting bark. S-shaped tunneling may be evident in places where bark has fallen off a branch. Inspections of the upper limbs of suspect parkway ash trees, using an aerial lift truck, often reveals many symptoms of infestation not readily visible from the ground. Woodpecker injury remains a strong indicator that a tree has been infested, since the woodpeckers are searching for EAB larvae. When woodpecker injury is noted, Village arborists remove portions of bark in that part of the tree to search for EAB larvae and tunnels. Unfortunately, EAB infestation is usually found. As of this writing, in early May 2012, a total of 657 infested parkway ash trees had already been identified, since the Village's first find in September 2010.



## Tree Trust Fund Receives Donation

Last Spring the Village received a very generous donation. Mount Prospect resident Terry Franzen was awarded a grant in the amount of \$10,000.00 from his employer HSBC Bank Mettawa, IL. Mr. Franzen was allowed to donate the funds to an environmental project of his choosing, and he chose a joint project between the Village and the Mt. Prospect Park District. Mr. Franzen and fellow HSBC volunteers helped plant twenty three new parkway trees around Fairview Elementary School to help replace trees recently lost due to Emerald Ash Borer. Additionally, a landscaped grove of trees was planted at the adjacent park.

The Village is extremely grateful to Mr. Franzen and HSBC for this tremendous contribution to our community. We hope this sets an example for other citizens and businesses to seek ways that they can help improve Mount Prospect. The Village will happily accept tree planting donations of any size, from individuals and corporations. The funds will be placed in the Village's Tree Trust Account and used for diversified parkway plantings throughout the community. All donors will receive a Certificate of Appreciation for their contributions to the quality of life in their community. For details about this program, please call Public Works at 847-870-5640.

The Village Board held a lengthy discussion about Mount Prospect's Emerald Ash Borer Management Plan on March 13, 2012, at a Committee of the Whole meeting. Forestry/Grounds staff presented information about the Village's EAB preparations going back to 2003, long before EAB was found in Mount Prospect. They also explained how their strategies changed once EAB was found in Mount Prospect, and how the Village is responding this year.

The use of EAB insecticides was discussed at length. The Village has been preventively treating about 800 parkway Ashes, selected due to their species, location, condition, and growing location, for several years. Starting in 2011, the Village had also been authorizing citizens to treat healthy parkway Ashes (trees not known to be infested), at their own expense by permit. At the March 13, 2012 meeting the Village Board directed staff to authorize similar treatments of even infested parkway Ash trees, as

long as the trees are not imminently hazardous. Forestry/Grounds staff does not recommend treating infested Ash trees; however, Public Works will now provide a permit application in response to such requests, after first inspecting the tree. As always, the Village will retain the right to remove infested trees, even if treated, when Forestry/Grounds staff determines removal is necessary.

Village arborists strongly recommend that private ash owners either budget for removing/replacing their trees within the next five years, or begin routine insecticide treatments starting immediately. Spring is usually the best time to treat, but if you missed it, ashes can usually be treated as late as September. Ash owners should weigh the cost of treatment over a number of years versus removing the tree and planting a suitable replacement. A comprehensive, unbiased report about EAB insecticides, written by university researchers, is available on the Village website, [www.mountprospect.org](http://www.mountprospect.org).

Answers to your questions about insecticide treatment for EAB, as well as many other frequently asked questions about EAB can be found on the Village's website. Additionally, a map of parkway ash locations throughout the Village can be found on the website, [www.mountprospect.org](http://www.mountprospect.org). Please contact the Public Works Department at (847)870-5640 with any questions concerning Emerald Ash Borer.

# Recycling Program



The Village has a very robust and successful recycling program for single family and multifamily properties. From the program of the early 1990's that used small blue bins and required residents to sort paper, plastic, glass and metal into separate bins for collection. to the current system of commingled material into one large cart, the changes in the program have helped to create a user friendly program and at the same time increasing recycling volumes. Here are some recycling tips:

## Do's

- Do place all recyclable material in your blue cart.
- Do clean all plastic containers of food waste prior to recycling.
- Do clean all metal items of food waste prior to recycling.
- Do separate plastic caps from plastic bottles and place both in the recycling cart.
- Do recycle paperback books.
- Do recycle six and twelve pack rings.

## Don'ts

- Don't place plastic bags in your recycling cart. Most grocery stores have a recycling bin for plastic bags.
- Don't line your recycling cart with a plastic bag or place plastic bags with recycling in your recycling cart. Recycling collected in plastic bags will be disposed of as garbage.
- Don't place motor oil, insecticide, herbicide or hazardous chemicals in your recycling cart. Please visit the

Village's website appropriate disposal methods for hazardous waste.

- Don't place hard cover books in your recycling cart.
- Don't place paper clips, binder clips, or three ring binders in your recycling cart.
- Don't place expanded foam or clear polystyrene in recycling carts. These items will be marked with a #6 recycling symbol.
- Don't place garbage including food waste in your recycling cart. Recycling carts filled with garbage will not be collected.
- Don't place window glass, dinnerware or ceramics in your recycling cart.
- Don't place electronic devices in your recycling cart. Please visit the Village's website for electronic recycling options.
- Don't place yard waste in your recycling cart.

Please contact Public Works or visit the Village's website for a list of approved recycling material and other recycling programs offered by the Village.

## Cart Exchange

If your current refuse and/or recycling carts are not meeting your needs you may exchange the cart(s) for a different size. There is no cost for exchanging carts. Refuse and recycling carts are available in 35, 65, and 95 gallon capacity.

The Village also offers additional carts for a one-time non-refundable rental fee of \$25 for each additional refuse cart regardless of size. Households are allowed one free recycling cart in addition to the recycling cart originally provided by the Village. If you require more than two recycling carts you will be charged a one-time non-refundable rental fee of \$25 for each recycling cart regardless of size in excess of two carts. Contact Public Works at 847-870-5640 to request an exchange or additional cart.





## Compact Fluorescent Light Bulb (CFL) Recycling

The Village in cooperation with the Solid Waste Agency of Northern Cook County (SWANCC) offers a free CFL recycling program to Mount Prospect residents. Residents can bring their CFLs and four foot fluorescents to the Public Works department during normal business hours (Monday-Friday 7:30 - 5:00PM) for recycling. CFLs should be brought to Public Works unbroken and in a zip lock bag for proper recycling.

## Medication/Sharps Recycling Program

Medications and sharps can be recycled at the Public Works facility Monday - Friday, between the hours of 7:30a.m. and 5p.m. No prescription drugs or sharps from businesses, schools or hospitals will be accepted. IDs will be checked for verification of residency.

### General tips:

- Prescription drugs that are more than a year old should be disposed of properly.
- Turn in non-prescription medicines without an expiration date that are more than six months old.
- Keep Pharmaceuticals in their original containers with labels to identify contents.
- Sharps need to be placed in a rigid container with a sealed lid. A new sharps container will be provided.

### Acceptable Items:

- Unused/Expired prescription medications
- Prescription cough syrup
- Prescription ear drops and eye drops
- Expired over the counter medications
- Residential sharps

### Unacceptable Items:

- Pharmaceutical Controlled Substances
- Institutional or business waste
- Non-prescription liquids
- Household Chemical Waste

## Permanent Electronic Recycling Drop Off

In response to the recent electronics landfill ban adopted by the State of Illinois the Village started accepting qualifying electronic devices for recycling at the Public Works facility (1700 W Central Rd) April 4th. Residentially generated electronic waste for recycling is accepted every Wednesday between the hours of 10a.m. and 12p.m. The program is in operation April - October This service is only available to residents of SWANCC communities and participants will be required to show ID. Residents also have the opportunity to visit several other permanent drop-off locations sponsored by SWANCC for a complete list visit the Village website at [www.mountprospect.org](http://www.mountprospect.org). Please contact the Public Works department at 847-870-5640 with any questions.

## Public Works Open House Street Sign Winners



**Sarah G. Thomas**

*Question: How many cans of pop will be consumed at this year's Open House?*

*Sarah's answer: 597 / Correct Answer: 612*



**Natalie Stonitsch (& sister Claire)**

*How many employees (full and part time) work for Public Works?*

*Answer: 69 (73 was the correct answer)*

# Business News

## Ribbon Cutting Ceremonies



**Pigtails & Crewcuts**  
26 Randhurst Village Drive., 847-506-1800  
[www.pigtailsandcrewcuts.com/mt-prospect/](http://www.pigtailsandcrewcuts.com/mt-prospect/)



**World Market**  
151 E. Euclid Ave., (847) 590-5841  
[www.worldmarket.com](http://www.worldmarket.com)

## Now Open at Randhurst Village



## Economic Development Update

### United Airlines

United Airlines has been granted approval to construct a 175,000 square foot warehouse building on the west side of their office campus along Algonquin Road. The facility will be utilized as a backup computer data center and is expected to be completed by the summer of 2013. United is striving for LEEDS Gold certification for the entire project which requires them to utilize numerous environmentally friendly building designs and materials. The Village will continue to work with United to coordinate the long term redevelopment of their former headquarters property.

### News at Randhurst Village

New tenants continue to sign on at Randhurst Village. Several restaurants have been added to the culinary mix - including Panera Bread (August), Eggsperience (September), Black Finn American Grille (October) and Earth and Ocean (December) In addition, retailers Children's Place, Parmida Home, Torrid and European Jewelers will be opening their doors throughout the summer.



### Welcome New Restaurant Mia's Cantina

Mia's Cantina Restaurant will be opening its' doors at 143 W. Prospect Avenue in the downtown district in late July. Mia's will be owned and operated by a local Mount Prospect resident who has over 10 years of experience with local Mexican restaurants. He plans on offering unique Mexican dishes as well as traditional fare.



# Business News

## Mount Prospect Chamber of Commerce

107 S Main Street 847/398-6616

[www.mountprospectchamber.org](http://www.mountprospectchamber.org)

[events@mountprospectchamber.org](mailto:events@mountprospectchamber.org)



### Dog Days of Summer 5K

Corporate Challenge continues in the Kensington Business Center and invites Corporate teams, families and student athletes to come out to this event on Thursday, August 2 Run/walk race @6pm - to register, visit [active.com](http://active.com)

### Mega Connect Multi-Chamber Networking Luncheon

Always a sell out, progressive table hopping networking with great speaker, don't miss it! Tuesday, August 7 11:30 am Holiday Inn-Mt. Prospect 200 E. Rand Road. info: [mountprospectchamber.org](http://mountprospectchamber.org) or [events@mountprospectchamber.org](mailto:events@mountprospectchamber.org).

### East meets West After Hours

Celebrate the many Japanese businesses in Mount Prospect! Mini expo, refreshments, raffle prizes and networking! Thursday, September 13 4:30-6:30pm Bristol Court Banquets 828 E. Rand Road

### Fall Classic Golf Outing at Mt. Prospect Golf Course

Great day out on a beautiful course, this outing co-sponsored by Northwest Community Healthcare is a must do! Helicopter ball drop! Register today! Thursday, September 20 - 10:30 am shotgun start!

For a copy of the new Mount Prospect Lifestyle Magazine, stop by Village Hall, Mount Prospect Public Library, Mt. Prospect Park District, River Trails Park District or the Mount Prospect Chamber of Commerce office.



*What's Missing From Mount Prospect? YOU!*

Have you ever thought about opening your own boutique or café? The Village of Mount Prospect is seeking new businesses – with a focus on retail and restaurants. If you have ever considered starting a new business or expanding an existing one, consider participating in the Entrepreneur's Cafe, a series of meetings and roundtable discussions for potential and existing businesses in the Village.

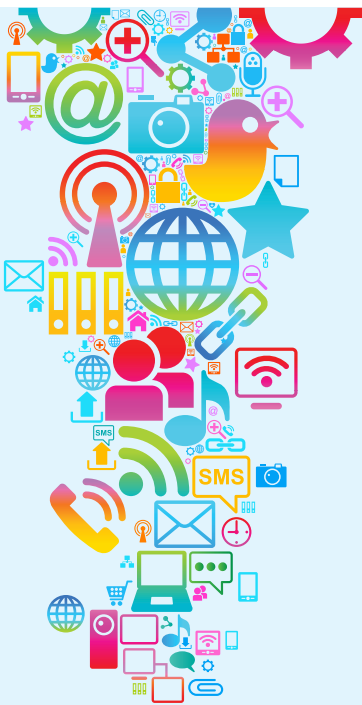
Our next meeting is scheduled for July 19 and will be held at the Chase Bank Building at 111 E Busse Ave. at 9:00 a.m. The topics to be discussed will include Marketing, Social Media and Cross Promotion and will focus on real-life examples.

### Future Meetings/Programs:

**September 11: Jump Start Your Business: Customer Service**, Mount Prospect Public Library 10 S. Emerson Street, call 847/253-5675 or [events@mppl.org](mailto:events@mppl.org) to register.

**October 23: Jump Start Your Business: Commercial Leases 101**, Mount Prospect Public Library 10 S. Emerson Street, call 847/253-5675 or [events@mppl.org](mailto:events@mppl.org) to register.

For more information about these programs, check out our web site [www.mountprospect.org/biz](http://www.mountprospect.org/biz) which includes a calendar of upcoming business events. You can also contact Maura El Metennani at 847/818-5308 or [melmeten@mountprospect.org](mailto:melmeten@mountprospect.org).



## Want to stay in touch on Village news and events?

- Sign up for Village E-Newsletter
- Experience Mount Prospect E-Newsletter (shopping, dining and entertainment)
- Follow us on Twitter and Facebook
- Sign up for Text Alerts

More details at [mountprospect.org](http://mountprospect.org)

**VILLAGE OF MOUNT PROSPECT**  
 50 S. Emerson Street  
 Mount Prospect, IL 60056  
[www.mountprospect.org](http://www.mountprospect.org)  
**VILLAGE HALL HOURS**  
 8:30 a.m. to 5 p.m., Monday - Friday



PRSRT STD  
 U.S. Postage  
 PAID  
 Mount Prospect, IL  
 Permit No. 13  
 CR RT

\*\*\*\*\* ECRWSS\*\*  
 POSTAL CUSTOMER  
 MOUNT PROSPECT, IL

**VILLAGE PHONE NUMBERS**

- Emergency** ..... 911
- Village Hall** ..... 392-6000  
 (includes Finance, Village Administration)  
 TDD ..... 392-6064
- Village Clerk**.....818-5355
- Television Services**..... 870-5685
- Community Development**  
 Building Division .....870-5675  
 Environmental Health ..... 870-5668  
 Planning Division .....818-5328
- Fire Dept.** (non-emergency) ..... 870-5666
- Human Services Dept.**..... 870-5680
- Police Dept.** (non-emergency) ..... 870-5656
- Public Works Dept.** ..... 870-5640
- Water Billing** ..... 392-6000

*All phone numbers are (847) area code unless otherwise noted.*

**VILLAGE OFFICIALS**

- MAYOR**  
 Irvana K. Wilks
- TRUSTEES**  
 Paul Wm. Hoefert                      John J. Matuszak  
 Arlene A. Juracek                     Steven S. Polit  
 A. John Korn                            Michael A. Zadel

**VILLAGE MANAGER**  
 Michael E. Janonis

**VILLAGE CLERK**  
 M. Lisa Angell

**Mount Prospect E-News**  
 Sign up to receive the latest information on community events, news and alerts at [www.mountprospect.org](http://www.mountprospect.org).

**NO PARKING ON VILLAGE STREETS**  
**2:00 A.M. TO 6:00 A.M.**

*The MOUNT PROSPECT VILLAGE NEWS is published by the Village as a public information service for residents. This publication may not be reproduced as a whole or in part by electronic, photographic, print, or any other means without prior written permission by the Mount Prospect Village Manager.*

**EDITOR**  
 Maura El Metennani, Public Information Officer  
[pio@mountprospect.org](mailto:pio@mountprospect.org)

Like Us on Facebook - Follow Us on Twitter



**experiencemountprospect.org**

If you want to know where to go and what to do in Mount Prospect, then check out Experience Mount Prospect. The program includes a web site, e-newsletter and Twitter and Facebook pages that are designed to keep you "in the know" with the latest news local businesses and the community on sales, specials, events and much more.



**EXPERIENCE**  
MOUNT PROSPECT

**SHOP LOCAL**

Experience Mount Prospect features the latest news, events, retail and dining values.

Don't miss out - sign up for our e-newsletter today!

Follow us on Twitter - Friend us on Facebook  
[exmp60056](https://twitter.com/exmp60056)

[www.experiencemountprospect.org](http://www.experiencemountprospect.org)

**COFFEE WITH COUNCIL**



Meet informally with the Village's Board of Trustees and Department Directors about anything concerning Mount Prospect that's on your mind. Coffee with Council is held on the second Saturday of every month (unless there is a conflict with a holiday) from 9:00 a.m. to 11:00 a.m. at Village Hall, 50 S. Emerson Street. For more information about Coffee with Council, please call the Village Manager's Office at 392-6000, or visit the Village's web site at [www.mountprospect.org](http://www.mountprospect.org).

## SPECIAL THANKS TO:

Village of Mount Prospect  
Mt. Prospect Park District  
Mount Prospect Public Works  
Mount Prospect Police Dept.  
Mount Prospect Fire Dept.  
Nicholas & Associates  
Colliers International



## MOUNT PROSPECT LIONS CLUB MISSION

**Our Mission:** To empower our members and volunteers to serve the community, meet humanitarian needs, encourage peace and promote international understanding through the Mount Prospect Lions Club.

**Who We Are:** Mount Prospect Lions Club members are civic-minded individuals who volunteer their time to make their community a better place by supporting the community and helping the less fortunate, especially the sight/hearing impaired.

For more information, visit our Web site at: <http://www.mtprospectlions.com>

The Mount Prospect Lions Club thanks you for your patronage at its annual fundraisers: the Mount Prospect Lions Club Festival (first week of July), the Mount Prospect Lions Club Farmers' Market (every Sunday morning from June through October), and the Mount Prospect Lions Club Corned Beef and Cabbage Dinner (first Friday in November).



## OUR SPONSORS

**Safari Childcare**  
We help them prepare for the jungle out there!  
[www.safarichildcare.com](http://www.safarichildcare.com) • (888)488-5883

**GARDEN FRESH MARKET**

**Le Peep Cafe & Grill**

**A-Express**  
TOWING & RECOVERY  
Light, Medium, Heavy Duty Towing  
847-991-0460

**ARC**  
Disposal & Recycling  
COMPANY INC.

**porte brown**  
CERTIFIED PUBLIC ACCOUNTANTS

**Friedrichs**  
Funeral Home, Inc.

**Busse**  
Car Wash  
Automotive

**DURABILT FENCE**

**BOSCH**  
Invented for life

**Miller**  
MILLER BREWING COMPANY

**International**  
FREIGHT SERVICES, INC.  
WE MAKE IT EASY TO DO BUSINESS AROUND THE WORLD.

**PNC BANK**

## BEER & WINE TENT (CASH BAR)

**Sponsored by Miller Beer**  
Served proudly by the Mt. Prospect Lions Club

**Wine & Cheese Tent**  
Served Proudly by the American Legion Post 525 & VFW Post 1337  
Also serving Bob Chinn's *Mai Tai*

**Miller Beer**  
MGD, Miller Lite, Peroni & Mike's Hard Lemonade

**Lions Club**  
Salted in the shell peanuts



## FOOD TENT

Come try some of the best food the area has to offer.  
A variety of food to meet everyone's tastes.

**Hershey's Ice Cream**  
Arlington Heights

**Billy Goat Tavern & Grill**  
Mount Prospect

**St. Peter's Lutheran Church Sweet Corn**  
Arlington Heights

**Crave Pizza**  
Mount Prospect

**Olympus Gyros**  
Mount Prospect

**Panda Express**  
Mount Prospect

**Emerson Ale House**  
Mount Prospect

**Retro Bistro**  
Mount Prospect

**Katie's Kitchen**  
Des Plaines

**T-Bob's Smoked BBQ**  
Des Plaines

**Mi Restaurant**  
Mount Prospect

**Tid Bits Fun Food**  
Prairie View



No outside food, beverages or coolers are allowed on the fair grounds. No selling of unauthorized merchandise.

## TUESDAY, JULY 3

6:00pm - 11:00pm **Unlimited Rides Special**

6:00pm - 11:00pm **Food Tent Beer & Wine Tent**

6:00pm - 6:15pm **Opening Ceremonies**  
(Boy Scout Color Guard)

6:15pm - 8:00pm **One Way Street**  
(Classic Rock)

8:30pm - 11:00pm **Exit 147**  
(Classic Pop/Rock)

## WEDNESDAY, JULY 4

7:00am - 11:00am **Annual Pancake Breakfast & Bake Sale**  
(Adults \$5.00, Children (6-12 yrs) \$3.00, Under 5 yrs Free)

9:00am **5K Run at Melas Park**  
(Sponsored by Mt Prospect Jaycees)

1:00pm **4th of July Parade**  
Come watch over 100 entries in this year's annual parade. The parade starts at 1:00pm at Lions Park and ends at Melas Park Fairgrounds.

1:00pm - 5:00pm **Unlimited Rides Special**

1:00pm - 11:00pm **Food Tent Beer & Wine Tent**

6:15pm - 8:00pm **Platinum**  
(Classic/Dance Rock)

8:30pm - 11:00pm **Fairlanes**  
(60's to 80's Rock & Roll)

9:30pm - 10:00pm **FIREWORKS**  
(Sponsored by Mt. Prospect Lions Club and the Village of Mt Prospect)



## THURSDAY, JULY 5

6:00pm - 11:00pm **Unlimited Rides Special**

6:00pm - 11:00pm **Food Tent Beer & Wine Tent**

6:15pm - 8:00pm **Free Beer Band**  
(Classic Rock)

8:15pm - 11:00pm **Heartache Tonight**  
(Eagles Tribute Band)

## FRIDAY, JULY 6

6:00pm - 11:00pm **Food Tent Beer & Wine Tent**

6:15pm - 8:00pm **Walt Fitz**  
(Pop Rock)

8:30pm - 11:00pm **DotDotDot**  
(Pop Rock)

## SATURDAY, JULY 7

Family Day, Sponsored by Safari Childcare, Inc.

- 9:00am - 2:00pm **Car Show.**  
(Sponsored by Chicagoland Classic Car Club)
- 1:00pm - 5:00pm **Unlimited Rides Special**
- 1:00pm - 5:00pm **Family Day**
- 1:00pm - 11:00pm **Food Tent**  
**Beer & Wine Tent**
- 1:00pm to 2:00pm **Undesired Operation**  
(Contemporary Pop)
- 3:30pm to 4:30pm **Serundipity**  
(Teen Pop)
- 6:15pm - 8:00pm **Brace For Impact**  
(Classic Hard Rock)
- 8:30pm - 11:00pm **Jak Tripper**  
(Classic Hard Rock)

## SUNDAY, JULY 8

- 1:00pm - 5:00pm **Unlimited Rides Special**
- 1:00pm - 11:00pm **Food Tent**  
**Beer & Wine Tent**
- 6:15pm - 8:00pm **Latin Inspirations**  
(Latin, Salsa, & Jazz)
- 8:30pm - 8:45pm **Raffle Drawing**  
(Mayor Irvana Wilks)
- 8:30pm - 11:00pm **Not-For-Profit**  
(Classic Pop/Rock/Dance)
- 9:30pm - 10:00pm **FIREWORKS**  
(Sponsored by Friedrichs Funeral Home)



## LIONS CLUB RAFFLE

Sponsored by  
Bosch Tools and Busse Car Wash & Automotive



- \*GRAND PRIZE:** Las Vegas Trip (Valued at \$2,000)
- SECOND PRIZE:** Bosch Tool Package
- THIRD PRIZE:** 42" Flat Television (Donated by A-Express)
- FOURTH PRIZE:** GPS Unit (Both Donated by **CUMBERLAND BARBERSHOP**)
- FIFTH PRIZE:** 2-Adult Bikes
- SIXTH PRIZE:** Local Dining Package
- Many More Prizes

- Major Raffle Drawing Sunday July 8th, 8:45PM
- Tickets \$5.00 Each or 5 For \$20.00
- Winners need not be present
- \* RESTRICTIONS APPLY

The LIONS Club is AUCTIONING a pair of daily tickets for each day of the Ryder Cup Six Day Event!

Register at [www.mtprospectlions.com](http://www.mtprospectlions.com) or at the Fairgrounds.  
Bidding Begins: 6/30 Bidding Ends: 7/7



### CHARITY GIFT CERTIFICATE



This Certificate Entitles Mount Prospect Lions Charities, Inc.

A Gift of Two (2) Ryder Cup Season Grounds Tickets

This Gift Presented by 2012 Ryder Cup Community Relations Committee

Charity Contact Please provide your mailing address, phone & e-mail address to the contact above for ticket fulfillment.

Visit [www.rydercup.com](http://www.rydercup.com) for the latest event information  
Actual tickets will be mailed in mid-August of 2012



## FIREWORKS SCHEDULE

July 4 - 9:30 PM  
Sponsored by Mt. Prospect Lions Club and the Village of Mount Prospect

July 8 - 9:30 PM  
Sponsored by Friedrichs Funeral Home, Inc.

## FANTASY AMUSEMENT COMPANY

Carnival rides, games and a kiddie midway. Wristbands are good on the date of the sale ONLY. Sales of wristbands stop 45 minutes prior to the end of the unlimited ride time. **Coupon is good for ONE wristband.**

Buy a one day special wristband for \$18 for unlimited rides on any of the following days and times:

## COUPON

\$2.00 OFF! Unlimited Rides

Coupon is good for ONE WRISTBAND ONLY

\$2.00 Coupon Good ONLY on Below Dates & Times

Tuesday, July 3	6:00PM - 11:00PM
Wednesday, July 4	1:00PM - 5:00PM
Thursday, July 5	6:00PM - 11:00PM
Saturday, July 7	1:00PM - 5:00PM
Sunday, July 8	1:00PM - 5:00PM

For additional rides specials and advance rides ticket sales, visit:  
[www.fantasyamusements.com](http://www.fantasyamusements.com)

## ENTERTAINMENT

Annual Pancake Breakfast and Bake Sale sponsored by Le Peep Café & Grill – Mount Prospect

Family Day sponsored by Safari Childcare, Inc. – Mount Prospect

## MT. PROSPECT FARMER'S MARKET

8:00AM – 1:00PM every Sunday from June 10th thru October 21st at the Mount Prospect Metra Station (West Commuter Lot @ Rt. 83 & NW Highway)



# 74<sup>th</sup> ANNUAL MT. PROSPECT LIONS CLUB FESTIVAL

JULY 3  
thru  
JULY 8

MELAS PARK  
Busse and Central Roads

For more Festival, Parade or Fireworks Information call the Village Hotline:

(847) 870-6622

or visit

[www.mtprospectlions.com](http://www.mtprospectlions.com)

[www.mountprospect.org](http://www.mountprospect.org)



# Village of Mount Prospect Water System

## 2011 CONSUMER CONFIDENCE REPORT

### SOURCE WATER CONTAMINANTS

Drinking water, including bottled water, may reasonably be expected to contain at least small amounts of some contaminants. The presence of contaminants does not necessarily indicate that water poses a health risk. Contaminants that may be present include:

**Microbial contaminants**, such as viruses and bacteria, which may come from sewage treatment plants, septic systems, agricultural livestock operations and wildlife;

**Inorganic contaminants**, such as salts and metals, which may be naturally occurring or result from urban stormwater runoff, industrial or domestic wastewater discharges, oil and gas production, mining or farming;

**Pesticides and herbicides**, which may come from a variety of sources such as agriculture, urban storm water runoff and residential uses;

**Organic chemical contaminants**, including synthetic and volatile organic chemicals, which are by-products of industrial processes and petroleum production, and may also come from gas stations, urban stormwater runoff, and septic systems; and

**Radioactive contaminants**, which may be naturally-occurring or be the result of oil and gas production and mining activities.

In order to ensure that tap water is safe, USEPA prescribes regulations that limit the amount of certain contaminants in water provided by public water systems. FDA regulations establish limits for contaminants in bottled water which must provide the same protection for public health.

Some people may be more vulnerable to contaminants in drinking water than the general population. Immuno-compromised persons such as persons with cancer undergoing chemotherapy, persons who have undergone organ transplants, people with HIV/AIDS or other immune system disorders, some elderly, and infants can be particularly at risk from infections. These people should seek advice about drinking water from their health care providers.

For more information about contaminants and potential health effects, or the USEPA/CDC guidelines on appropriate means to lessen the risk of infection by *Cryptosporidium* and other microbial contaminants, call the USEPA's Safe Drinking Water Hotline at **1-800-426-4791**.

The Village of Mount Prospect is dedicated to providing you with an adequate and dependable supply of safe drinking water. As part of this effort, we have prepared this **Consumer Confidence Report (CCR)**. This report will provide residents and businesses served by the Village-owned water distribution system with the information necessary to make prudent decisions about how they use tap water. **Please note, information in this CCR does not pertain to Illinois American Water Company water customers.** Illinois American Water Company will prepare and distribute a separate CCR for their water customers and they can be reached at 1-800-422-2782.

This report is a requirement of the 1996 Safe Drinking Water Act amendments. It summarizes where your water came from, what it was made of, and how it compared to the standards established by regulatory agencies. Information about water consumed during the reporting year will be made available in a CCR scheduled for distribution during the following year. CCRs will be published in July of each year.

Information in this report describes water consumed during the 2011 calendar year. **We are happy to report that the Village-owned water system had no water quality standard violations last year.**

Drinking water, including bottled water, may reasonably be expected to contain at least small amounts of some contaminants. The presence of contaminants does not necessarily indicate that water poses a health risk. More information about contaminants and potential health effects can be obtained by calling the USEPA's Safe Drinking Water Hotline at 1-800-426-4791.

### WHERE DO WE GET OUR WATER?

Our water supply comes from Lake Michigan, one of the five Great Lakes. **The lake water is treated and purified by the City of Chicago, Department of Water Management (312-744-6635).** The finished drinking water is then pumped to the **Northwest Suburban Municipal Joint Action Water Agency (NSMJAWA)** reservoirs. NSMJAWA then pumps the water to Mount Prospect and six (6) other northwest suburban communities via large water transmission mains. Three of these mains terminate at receiving structures in Mount Prospect. The structures are situated at various locations throughout the Village. Prior to receiving lake water, the Village pumped water from as many as 17 public deep wells located throughout the Village.

By volume, Lake Michigan is the second largest of the Great Lakes and third largest by volume. Hydrologically, it is inseparable from Lake Huron. As water travels over the surface of the land or through the ground, it can dissolve naturally occurring minerals and radioactive materials. It can also pick up substances resulting from the presence of animals or from human activity.

Untreated lake water has the potential to contain contaminants. However, it is important to realize that these materials can be found throughout nature to some degree. Their presence does not necessarily mean that there is a health risk associated with our source water. Rather, the most important factor to consider is how much of a particular contaminant can be found in our source water.



Fortunately, the quality of raw, untreated Lake Michigan water is good. This means that conventional treatment methods, such as disinfection with chlorine, coagulation, and sedimentation with sand filtration can be used effectively to produce large quantities of safe drinking water.

### HAS AN ASSESSMENT BEEN MADE OF LAKE MICHIGAN WATER?

**Yes.** The Illinois Environmental Protection Agency (IEPA) completed a Source Water Assessment Program (SWAP). The IEPA implemented the SWAP to assist with watershed protection of public drinking water supplies. The SWAP inventories potential sources of contamination and determines the susceptibility of the source water to contamination.

The Illinois EPA considers all surface water sources of community water supply to be susceptible to potential pollution problems. The very nature of surface water allows contaminants to migrate into the intake with no protection only dilution. This is the reason for mandatory treatment for all surface water supplies in Illinois. Chicago's offshore intakes are located at a distance that shoreline impacts are not usually considered a factor on water quality. At certain times of the year, however, the potential for contamination exists due to wet-weather flows and river reversals. In addition, the placement of the crib structures may serve to attract waterfowl, gulls and terns that frequent the Great Lakes area, thereby concentrating fecal

deposits at the intake and thus compromising the source water quality. Conversely, the shore intakes are highly susceptible to storm water runoff, marinas and shoreline point sources due to the influx of groundwater to the lake.

Further information regarding our source water assessment; please contact the City of Chicago, Department of Water Management at **1-312-744-6635** or the Northwest Suburban Municipal Joint Action Water Agency at **1-773-686-0077**.

### WHO DECIDES IF WATER IS SAFE TO DRINK?

In order to ensure that tap water is safe to drink; the United States Environmental Protection Agency (USEPA) and the

## 2011 VILLAGE OF MOUNT PROSPECT WATER QUALITY TESTING RESULTS

### REGULATED AND TESTED FOR IN THE VILLAGE-OWNED WATER DISTRIBUTION SYSTEM

SUBSTANCE (UNITS) Agency	MCLG	MCL	AMOUNT	RANGE OF DETECTION	VIOLATION DETECTION	DATE SAMPLED	TYPICAL SOURCE OF CONTAMINATION
Total Coliform Bacteria (TC) (%pos/mo.)	0	Presence in < 5% samples	2.3	NA	None		Naturally present in environment Human and animal fecal waste.
Fecal Coliform (FC) and E. Coli (#pos/mo.)	0	0	0	NA	None		Naturally present in environment. Human and animal fecal waste.
Total Trihalomethanes THHM (ppb)	NA	80	40 (highest value)	28.6 – 59.8	None		By-product of drinking water chlorination.
Halooacetic Acids HAA5 (ppb)	NA	60	18 (highest value)	12.61 – 16.23	None		By-product of drinking water chlorination.
Barium (ppm)	2	2	0.0331	0.0275 – 0.0331	None	07/07/09	Discharge from drilling wastes, discharge from metal refineries and erosion of natural deposits.
Fluoride (ppm)	4	4	1.35	0.974 – 1.35	None	07/07/09	Erosion of natural deposits; water additive that promotes strong teeth; discharge from fertilizer and aluminum factories.
Iron (ppm)		1.0	1.03	0.0422 – 1.03	None	07/07/09	This contaminant is not currently regulated by the USEPA. However, the state regulates. Erosion of natural deposits.
Manganese (ppb)	150	150	19.7	18.2 – 19.7	None	07/07/09	This contaminant is not currently regulated by the USEPA. However, the state regulates. Erosion of natural deposits.
Sodium (raw water)(ppm)			82.6	30.4 – 82.6	None	07/07/09	Erosion of naturally occurring deposits; Used as water softener.
Chlorine (as CL <sub>2</sub> )(ppm)	MRDLG = 4.0	MRDL = 4.0	0.8 (highest value)	0.65 – 08988	None	01/01/11	Water additive used to control microbes.
Combined Radium (226/228)(pCi/L)	0	5	8.5	8 – 8.5	None	08/09/10	Erosion of natural deposits.
Gross Alpha excluding radon and uranium	0	15	24.4	10.5 – 24.4	None	08/09/10	Erosion of natural deposits.
Uranium (ug/l)	0	30	2.235	2.235 – 2.235	None	08/09/10	Erosion of natural deposits.

### REGULATED AND TESTED FOR AT THE CONSUMERS' TAP\* (SAMPLE OF 30 HOMES)

SUBSTANCE (UNITS) Agency	MCLG	MCL	AMOUNT	RANGE OF DETECTION	VIOLATION DETECTION	DATE SAMPLED	TYPICAL SOURCE OF CONTAMINATION
Copper (ppm)	1.3	Action Level = 1.3 ppm	1.15 (highest value)	0 exceeding AL	None	07-2011	Corrosion of household plumbing systems; Erosion of natural deposits; leaching from wood preservatives.
Lead (ppb)	0	Action Level = 15 ppb	11.8 (highest value)	0 exceeding AL	None	07-2011	Corrosion of household plumbing systems; Erosion of natural deposits.



Illinois Environmental Protection Agency (IEPA) prescribes regulations that limit the amount of certain contaminants in the water provided by public water systems. FDA regulations establish limits for contaminants in bottled water, which must provide the same protection for public health.

### IS MOUNT PROSPECT'S DRINKING WATER SAFE?

**Yes it is.** Last year, Mount Prospect complied with all of the federal and state regulations pertaining to the storage and distribution of drinking water. No violations were recorded. The table on Page 2 summarizes the tests that were performed to ensure compliance with water quality standards. Page 3 has additional tables

and outlines the definitions associated with this information.

The City of Chicago conducted a number of additional water quality tests as well. In fact, they routinely performed over 70 different water quality tests as part of their raw water treatment process. The results of all of these tests complied with federal and state drinking water regulations. No violations were recorded.

In compliance with the provisions of the Long Term 2 Enhanced Surface Water Treatment Rule (LT2ESWTR), the City of Chicago monitored for Cryptosporidium, Giardia, E. Coli, and turbidity, a process that began in 2006. Monitoring detected Giardia in one raw lake water sample collected in 2010. Treatment



processes have been optimized by the City of Chicago to provide effective barriers for removal.

In addition to both the Village and the City of Chicago tests, the Village's water distributor, NSMJAWA also performs a number of water quality

## REGULATED AND TESTED FOR BY THE CITY OF CHICAGO OR BY NSMJAWA

SUBSTANCE (UNITS) Agency	MCLG	MCL	AMOUNT	RANGE OF DETECTION	VIOLATION DETECTION	DATE SAMPLED	TYPICAL SOURCE OF CONTAMINATION
Total Trihalomethanes (ppb) Highest Running Annual Average Computed	NA	80	45	44.9 – 44.9	None		By-product of drinking water chlorination.
Haloacetic Acids, HAA5 (ppb) Highest Running Annual Average Computed	NA	60	21	20.9 – 20.9	None		By-product of drinking water chlorination.
Chlorine (as CL2) (ppm)	MRDLG = 4.0	MRDL = 4.0	0.6 (highest value)	0.6 – 0.6	None	01/01/11	Water additive used top control microbes.
Turbidity (NTU) Highest single measurement	NA	TT = 1 NTU max	0.86 NTU	NA	Routine Monitoring		Soil runoff.
Turbidity (%<0.3 NTU) Lowest monthly percent meeting limit	NA	TT	99.50%	99.50% – 100.000%	Routine Monitoring		Soil runoff.
Barium (ppm)	2	2	0.0208	0.0201 – 0.0208	None		Discharge from drilling wastes, discharge from metal refineries and erosion of natural deposits.
Fluoride (ppm)	4	4	0.92	0.81 – 0.92	None		Erosion of natural deposits; water additive that promotes strong teeth.
Nitrate (as Nitrogen) (ppm)	10	10	0.44	0.39 – 0.44	None		Runoff from fertilizer use; Leaching from septic tanks, sewage; Erosion of natural deposits.
Total Nitrate & Nitrite (ppm)	10	10	0.44	0.39 – 0.44	None		Runoff from fertilizer use; Leaching from septic tanks, sewage; Erosion of natural deposits.
Sodium (ppm)	NA	NA	6.64 (highest value)	6.63 – 6.64	None		Erosion of naturally occurring deposits; Used in water softener regeneration.
Sulfate (ppm)	NA	NA	16.1	14.4 – 16.1	None		Erosion of naturally occurring deposits.
Combined Radium (226/228) (pCi/L)	0	5	1.38	1.300 – 1.380	None	03-17-2008	Erosion of natural deposits.
Gross Alpha excluding radon and uranium	0	15	0.88	0.090 – 0.880	None	03-17-2008	Erosion of natural deposits.

**Total Organic Carbon (TOC)** The percentage of Total Organic Carbon (TOC) removal was measured each month and the system met all TOC removal requirements set by IEPA.

*\*If a date appears, the IEPA requires monitoring for this substance less than once per year because the concentrations do not frequently change. No date indicates monitoring was done during the current CCR reporting year.*

## VIOLATION SUMMARY TABLE No violations were issued during this CCR year.

## DEFINITIONS

**MCLG** – Maximum Contaminant Level Goal: The level of a contaminant in drinking water, which there is no known or expected risk to health. MCLGs allow for a margin of safety.

**MCL** – Maximum Contaminant Level: The highest level of a contaminant that is allowed in drinking water. MCLs are set as close to MCLGs as feasible using the best available treatment technology.

**MRDLG** – Maximum Residual Disinfectant Level Goal. The level of a drinking water disinfectant below which there is no known or expected risk to health. MRDLGs do not reflect the benefits of the use of disinfectants to control microbial contaminants.

**MRDL** – Maximum Residual Disinfectant Level. The highest level of a drinking water disinfectant allowed in drinking water. There is convincing evidence that addition of a disinfectant is necessary for control of microbial contaminants.

**ppm** – Parts Per Million (same as mg/l) or one ounce in 7,350 gallons of water.

**ppb** – Parts Per Billion (same as ug/l) or one ounce in 7,350,000 gallons of water.

**ppt** – Parts per Trillion or nanograms per liter.

**ppq** – Parts per quadrillion or pictograms per liter.

**#pos/mo** – This represents the number of positive samples per month.

**%pos/mo** – This represents the percentage of positive samples per month.

**AL** – Action Level: The concentration of a contaminant that triggers treatment or other required actions by the water supply.

**ND** – Not Detectable: Not found at the testing limits.

**NA** – Not Applicable.

**TT** – Treatment Technique.

**%<0.5 NTU** – Percent of samples less than .5 NTU.

**Amount** column is an average of all sample result data collected during the CCR calendar year.

**NTU** – Nephelometric Turbidity Unit, used to measure cloudiness in the drinking water.

**Range of Detections** represents a range of individual sample results, from lowest to highest, taken during the CCR calendar year.

**Date of Sample** represents whether the sample was collected during the CCR calendar year or the last time IEPA required samples to be collected. If no date appears, then the sample was collected during the reporting year.

**pCi/L** – Picocuries per liter, used to measure radioactivity.

**Turbidity** is a measurement of how cloudy the water appears. It is monitored because it is a good indicator of water quality and the effectiveness of our filtration system and disinfectants.

**Sodium** There is no MCL for sodium. However, individuals on a sodium restricted diet should consider consulting a physician about this level of sodium in the water.

tests. No violations were recorded. The results of NWSMJAWA and the City of Chicago's analyses are available to the public and are on file at the Mount Prospect Public Works Facility.

## ARE THERE ANY PROBLEMS WITH LEAD IN OUR WATER?

**No.** Village tests for lead and copper content indicate that there are no unhealthy levels of either contaminant in our drinking water.

If present, elevated levels of lead can cause serious health problems, especially for pregnant women and young children. Lead in drinking water is primarily from materials and components associated with service lines and home plumbing. The Village of Mount Prospect is responsible for providing high quality drinking water, but cannot control the variety of materials used in plumbing components. When your water has been sitting for several hours, you can minimize the potential for lead exposure by flushing your tap for 30 seconds to 2 minutes before using water for drinking or cooking.

Presently, the Village tests for lead and copper content once every three (3) years. We collect samples from the taps of 30 private homes. In order to avoid corrective action, the samples at the 90th percentile must be less than the Maximum Contaminant Level (MCL) established for each contaminant. The table on page 2 summarizes the results of our last round of lead and copper testing, which we completed in 2011. We will test for lead and copper again in the summer of 2014.

It should be noted that infants and young children are more vulnerable to lead in drinking water than the general population. It is possible that lead levels in your home may be higher than in other homes due to the types of materials used in your home's plumbing system. If you are concerned about elevated lead levels

in your water, you may wish to have it tested at a local laboratory. Information on lead in drinking water, testing methods, and steps you can take to minimize exposure is available from the USEPA's Safe Drinking Water Hotline at **1-800-426-4791**. You can also visit them on the web at [www.epa.gov/safewater/facts.html](http://www.epa.gov/safewater/facts.html).

## WHO CAN I TALK TO IF I HAVE QUESTIONS OR COMMENTS ABOUT THE VILLAGE-OWNED WATER SYSTEM?

If you have any questions about this report, or would like additional information about the Village-owned water system, please feel free to contact Water/Sewer Superintendent Matt Overeem at 847-870-5640. Or, if you prefer, send an e-mail message to [movereem@mountprospect.org](mailto:movereem@mountprospect.org).

In addition, the Mayor and Board of Trustees of the Village of Mount Prospect hold regular board meetings on the first and third Tuesday of every month. These meetings commence at 7:00 PM in the Village Hall, located at 50 South Emerson Street. Questions or comments about the Village-owned water system may be introduced at any of these meetings.

## EN ESPANOL

La ciudad de Mount Prospect continua ofreciendo la mejor calidad de agua y servicios a nuestros clientes. Parte de estos servicios es proveer información acerca del estado presente y futuro del agua. En el folleto "Confianza al Consumido" se da suficiente información para que usted pueda tomar decisiones con respecto al suministro y al uso del agua. Este informe es un requisito de la enmendadura del "Safe Drinking Water Act" de 1996, administrada por las agencias "United States Environmental Protection Agency" (USEPA) y "Illinois Environmental Protection Agency" (IEPA). Si usted tiene alguna pregunta acerca de la calidad del agua, por favor llame al teléfono **-847-870-8640**.

## ADDITIONAL COPIES OF THIS REPORT ARE AVAILABLE AT:

Public Works Facility, 1700 W. Central Rd.

Mount Prospect Public Library, 10 S. Emerson St.

Village Hall, 50 S. Emerson St.

Community Connections Center, 1711 W. Algonquin Rd.