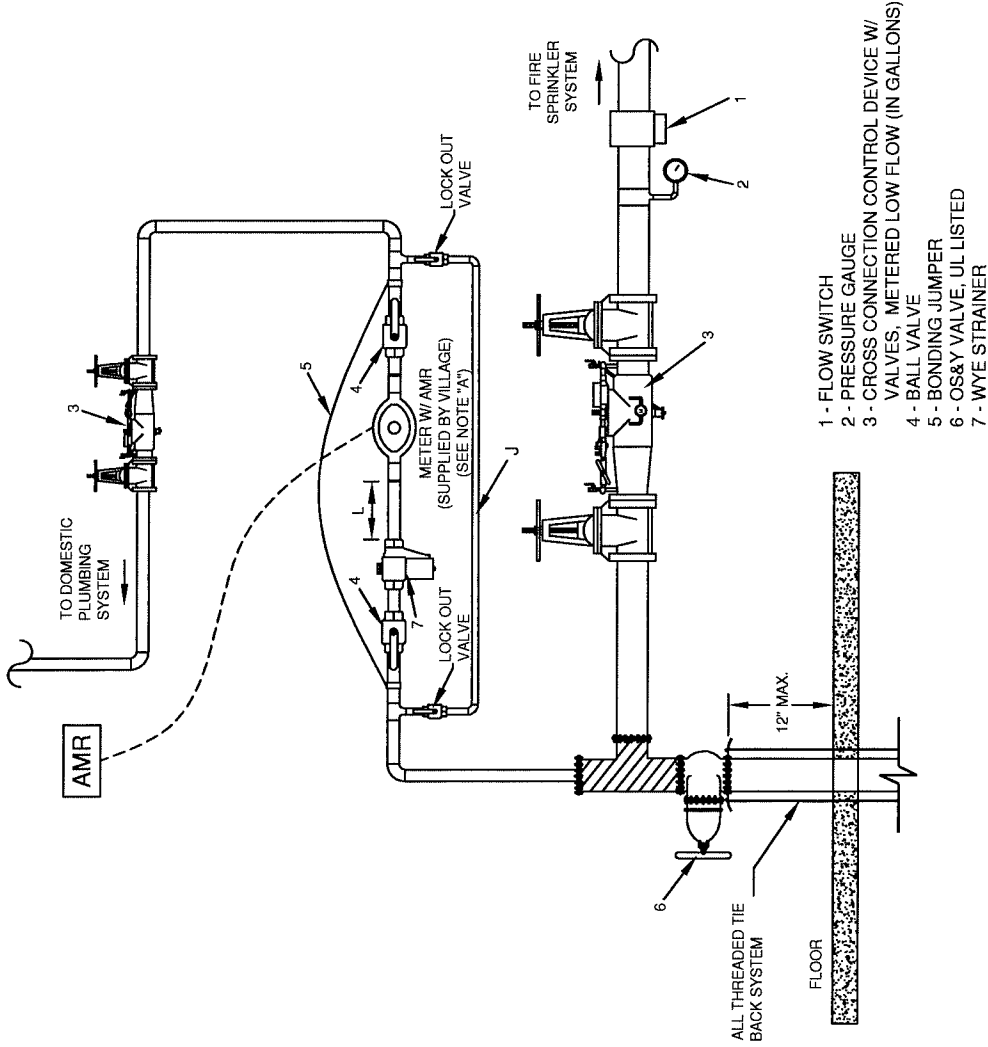


**NOTES:**

- A. ALL BRASS FITTINGS, SUCH AS TAILPIECES, VALVES, FLANGES, STRAINERS, SHALL BE NO LEAD; LOW-LEAD OR ENVIROBRASS CONFORMING TO 2014 EPA REQUIREMENTS AND SHALL BE CLEARLY LABELED OR MARKED.
- B. ALL METERS MUST BE INSTALLED IN THE HORIZONTAL POSITION, METER UP.
- C. ALL METERS MUST REGISTER IN GALLONS.
- D. SUFFICIENT SPACE MUST BE PROVIDED, TYPICALLY 1' - 2' IN EACH DIRECTION, TO MAINTAIN AND REPAIR THE METER AND BACK FLOW DEVICE.
- E. THE METER MAY NOT BE LOCATED IN A CRAWL SPACE OR OTHER UNHEATED AREA.
- F. BACK FLOW / CROSS CONNECTION CONTROL DEVICE REQUIRED ON ALL COMMERCIAL SERVICES. PROVIDE CERTIFICATION TO PUBLIC WORKS BEFORE REQUESTING OCCUPANCY.
- G. CROSS CONNECTION CERTIFICATIONS MUST BE WITH EACH DEVICE.
- H. AMR MODULE MUST BE INSTALLED AS HIGH AS POSSIBLE ON CLOSEST PERIMETER WALL.
- I. PROVIDE MAINTENANCE AND REPAIR ACCESS TO METER AT ALL TIMES.
- J. METERS SHALL HAVE STRAINER INSTALLED UPSTREAM.
- K. METERS SHALL HAVE BYPASS PIPING INSTALLED WITH TWO LOCKABLE VALVES.
- L. PLUMBER TO INSTALL 1-1/2" OR LARGER METER W/ FLANGE.
- M. DISTANCE BETWEEN STRAINER AND METER MUST BE GREATER THAN 5 PIPE DIAMETER.
- N. USE OF A SPOOL PIECE, METER BYPASS, OR USE OF WATER WITHOUT A METER IS PROHIBITED, AND SUBJECT TO PENALTIES.
- O. NO DISSIMILAR METALS WITHOUT DIELECTRIC SEPARATION.



**COMBINED WATER SERVICE 3" AND LARGER  
DOMESTIC SUPPLY 2" AND LARGER**

METER LAYING LENGTH	
2" METRON SPECTRUM 130	F to F 9-3/8"
3" METRON SPECTRUM 175	11-3/4"
1-1/2" METRON S88	7-7/8"

**Village of Mount Prospect**  
Public Works Department  
1700 W Central Rd

**COMMERCIAL METER DETAIL-B**

Scale: None

Last Revised: 1-16