

BURNING BUSH LANE STREET LIGHTING

VILLAGE OF MOUNT PROSPECT, ILLINOIS

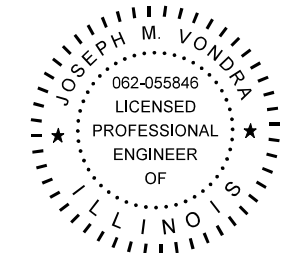
INDEX OF SHEETS

SHEET NO.	DESCRIPTION
1	COVER SHEET, INDEX OF SHEETS
2	GENERAL NOTES, LEGEND, SUMMARY OF QUANTITIES
3-11	DETAIL SHEETS
12-13	LIGHTING PLANS
14	SINGLE LINE DIAGRAM



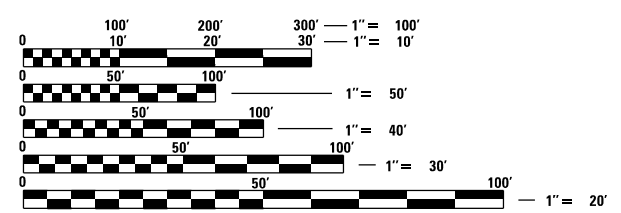
THE CONTRACTOR WILL NOT BE ALLOWED TO COMMENCE CONSTRUCTION UNTIL CERTIFICATES OF INSURANCE INDEMNIFYING AS ADDITIONAL INSURED PARTIES THE VILLAGE OF MOUNT PROSPECT AND THE CONSULTING ENGINEER, CIORBA GROUP, INC., 8725, SUITE 600, W. HIGGINS ROAD, CHICAGO, ILLINOIS 60631, HAVE BEEN DELIVERED TO AND APPROVED BY CIORBA GROUP, INC.

PROJECT BEGINS
EUCLID AVE
STA 10+26



DATE: 7/31/2024
SEAL EXPIRES: 11/30/2025

SIGNED: *Joseph M. Vondra*



LOCATION MAP
(NOT TO SCALE)

GROSS LENGTH = 2,694 FEET (0.51 MILES)
NET LENGTH = 2,694 FEET (0.51 MILES)

FULL SIZE PLANS HAVE BEEN PREPARED USING STANDARD ENGINEERING SCALES. REDUCED SIZED PLANS WILL NOT CONFORM TO STANDARD SCALES. IN MAKING MEASUREMENTS ON REDUCED PLANS, THE ABOVE SCALES MAY BE USED.

J.U.L.I.E.
JOINT UTILITY LOCATION INFORMATION FOR EXCAVATION
1-800-892-0123
OR 811

CiorbaGroup
CONSULTING ENGINEERS

DESIGN FIRM REGISTRATION NUMBER: 184-001016
8725 W. Higgins Road, Suite 600 | Chicago, IL 60631
P 773.775.4009 | www.ciorba.com

ACCESS

THE CONTRACTOR WILL BE REQUIRED TO MAINTAIN INGRESS AND EGRESS FOR EMERGENCY VEHICLES AT ALL TIMES DURING THE CONSTRUCTION PERIOD. DURING CONSTRUCTION, GARBAGE TRUCKS MUST BE PERMITTED ACCESS TO THE WORK ZONE IN ORDER TO PICK UP COMMERCIAL GARBAGE FOR THOSE PROPERTIES IMPACTED BY CONSTRUCTION. IF GARBAGE TRUCKS ACCESS IS NOT PROVIDED, THE CONTRACTOR WILL BE REQUIRED TO MOVE TRASH CONTAINERS TO AN ACCESSIBLE LOCATION.

UNDERGROUND UTILITIES

THE LOCATIONS OF THE UNDERGROUND UTILITIES AS SHOWN ON THE PLANS HAVE BEEN OBTAINED BY FIELD SURVEYS AND SEARCHES OF AVAILABLE RECORDS. IT IS BELIEVED THAT THE DATA IS ESSENTIALLY CORRECT, BUT THE VILLAGE OF MOUNT PROSPECT, AND/OR OTHER OFFICES AND AGENCIES ASSOCIATED WITH THE DEVELOPMENT OF THESE PLANS DO NOT GUARANTEE THEIR ACCURACY OR COMPLETENESS. THE CONTRACTOR WILL BE REQUIRED TO VERIFY THE LOCATION OF EACH FACILITY WITH THE UTILITY COMPANY, AND SHALL TAKE DUE CARE IN ALL PHASES OF THE CONSTRUCTION TO PROTECT ANY SUCH FACILITIES WHICH MAY BE AFFECTED BY THE WORK. ANY DAMAGE TO THE EXISTING UTILITIES SHALL BE REPAIRED IN ACCORDANCE WITH ARTICLE LR 105.

ADJUSTMENTS REQUIRED BY UTILITY COMPANIES WILL BE PERFORMED BY THE COMPANY INVOLVED OR ITS CONTRACTOR, BUT WILL BE COORDINATED BY THE GENERAL CONTRACTOR.

COORDINATION OF ALL UTILITY WORK INVOLVED IN THE CONSTRUCTION AREA WILL BE DISCUSSED AT A PRE-CONSTRUCTION CONFERENCE.

THE CONTRACTOR SHALL USE EXTREME CAUTION IN THE REMOVAL OF ABANDONED EXISTING GAS LINES SINCE RESIDUAL MATERIALS CONTAINED THEREIN ARE HIGHLY EXPLOSIVE, FLAMMABLE, AND TOXIC. ONCE THE MAINS ARE ABANDONED BY THE OWNER, THE CONTRACTOR SHALL ASSUME ALL RESPONSIBILITY FOR ANY DAMAGE AND/OR INJURY OCCURRING ON THE PROJECT DUE TO HIS OPERATIONS NEXT TO THE MAINS AND/OR THE METHOD OF REMOVAL OF THE ABANDONED MAINS.

OPEN EXCAVATION

THE CONTRACTOR WILL NOT BE ALLOWED TO LEAVE EXCAVATIONS OPEN OVERNIGHT. THE CONTRACTOR WILL BE RESPONSIBLE FOR COMPLETELY BACKFILLING OR PLATING OVER ALL EXCAVATIONS AT THE END OF EACH DAY. IF THE EXCAVATIONS ARE BACKFILLED THEY SHALL BE FILLED WITH AN AGGREGATE MEETING THE GRADATION OF CA-6. THE MATERIAL WILL BE COMPACTED SUFFICIENTLY TO PREVENT RUTTING OR SETTLEMENT OF MATERIALS UNDER TRAFFIC LOADS. IF PLATES ARE USED THEY SHALL BE OF SUFFICIENT THICKNESS TO SUPPORT VEHICULAR LOADS. ADDITIONALLY THEY SHALL EXTEND A MINIMUM OF NINE INCHES (9") BEYOND THE LIMITS OF THE EXCAVATION ON ALL SIDES. IF THE PLATES ARE TO BE LEFT OVER THE WEEKEND, THE EDGES OF THE PLATES SHALL BE CUSHIONED WITH A BITUMINOUS MIXTURE IN AREAS WHERE VEHICULAR TRAFFIC WILL CROSS THE PLATES.

THE COST FOR PROVIDING THE AGGREGATE, PLATES AND BITUMINOUS MIXTURE WILL NOT BE PAID FOR DIRECTLY BUT SHALL BE INCLUDED IN THE VARIOUS CONTRACT ITEMS.

TREE PROTECTION

THE CONTRACTOR SHALL BE RESPONSIBLE FOR BEING FAMILIAR WITH AND COMPLYING WITH ALL ASPECTS OF THE VILLAGE OF MOUNT PROSPECT TREE PROTECTION ORDINANCES AND ARBORICULTURAL STANDARDS MANUAL.

STREET SIGNS

IF ANY STREET SIGNS ARE DAMAGED DURING CONSTRUCTION THEY SHALL BE REPLACED AT THE CONTRACTOR'S EXPENSE.

MAINTENANCE OF EXISTING DRAINAGE STRUCTURES

LOOSE MATERIAL THAT IS DEPOSITED IN THE FLOW LINE OF GUTTERS OR DRAINAGE STRUCTURES THAT INHIBITS THE NATURAL FLOW OF WATER SHALL BE REMOVED AT THE CLOSE OF EACH WORKING DAY. AT THE CONCLUSION OF THE CONSTRUCTION OPERATIONS, ALL DRAINAGE FACILITIES SHALL BE CLEAN AND FREE OF ALL OBSTRUCTIONS. THE COST OF THIS WORK SHALL BE INCLUDED IN THE VARIOUS CONTRACT ITEMS.

SAW CUTTING

THE CONTRACTOR SHALL SAW CUT ASPHALT PAVEMENT AND CONCRETE PAVEMENT AS INDICATED ON THE PLANS OR AS DIRECTED BY THE ENGINEER, TO SEPARATE THE EXISTING PAVEMENT TO BE REMOVED BY MEANS OF AN APPROVED CONCRETE SAW TO A DEPTH AS DIRECTED BY THE ENGINEER. SUITABLE GUIDELINES OR DEVICES SHALL BE USED TO ASSURE CUTTING A NEAT, STRAIGHT LINE AS SHOWN ON THE PLANS. CARE SHALL BE TAKEN BY THE CONTRACTOR SO AS NOT TO DAMAGE THE REMAINING PAVEMENT DIRECTLY ADJACENT TO THE PAVEMENT TO BE REMOVED. ANY DAMAGE TO THE EXISTING PAVEMENT RESULTING FROM PAVEMENT REMOVAL OPERATIONS SHALL BE REPAIRED AT THE CONTRACTOR'S EXPENSE. THE PRICE OF SAW CUTTING, AS NOTED ABOVE, SHALL BE INCLUDED IN THE PARTICULAR PAY ITEMS.

TRAFFIC PROTECTION

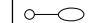


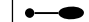


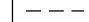



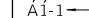
WHEN WORK COMMENCES, THE CONTRACTOR SHALL ASSUME THE MAINTENANCE OF ALL PAVEMENT, SHOULDERS, DRAINAGE FACILITIES, TRAFFIC CONTROL SIGNS, PAVEMENT MARKING, AND OTHER APPURTENANCES ON ROADWAYS WITHIN THE LIMITS OF THE CONTRACT WHICH ARE TO BE USED BY THE PUBLIC DURING CONSTRUCTION AND TO RETAIN THIS MAINTENANCE RESPONSIBILITY UNTIL PROJECT COMPLETION. NEED FOR SNOW AND ICE CONTROL DURING THE CONSTRUCTION PERIOD SHALL BE ACCOMMODATED FOR BY OTHERS. ALL UNBALLASTED TYPE I & II BARRICADES SHALL HAVE TWO SANDBAGS ONE ACROSS EACH BOTTOM RAIL.

SUMARY OF QUANTITIES

PAY ITEM NO.	DESCRIPTION	UNIT	QUANTITY
1	UNDERGROUND CONDUIT, GALVANIZED STEEL, 2"	FOOT	20
2	UNDERGROUND CONDUIT, GALVANIZED STEEL, 3"	FOOT	319
3	UNIT DUCT, 600V, 2-1C NO.6, 1/C NO.8 GROUND, (XLP-TYPE USE), 1" DIA. POLYETHYLEN	FOOT	2,666
4	ELECTRIC CABLE IN CONDUIT, 600V (XLP-TYPE USE), 1/C NO. 2	FOOT	210
5	LIGHT STANDARD, ALUMINUM, 25' M.H., 10 FT. CLAMP-ON MAST ARM, LED LUMINAIRE	EACH	9
* 6	LIGHT STANDARD, ALUMINUM, 25' M.H., 12 FT. CLAMP-ON MAST ARM, LED LUMINAIRE	EACH	1
* 7	LIGHT STANDARD, ALUMINUM, 25' M.H., 15 FT. CLAMP-ON MAST ARM, LED LUMINAIRE	EACH	1
8	ELECTRIC UTILITY SERVICE CONNECTION (COMED)	L SUM	1
9	ELECTRIC SERVICE INSTALLATION	EACH	1
10	LIGHTING CONTROLLER	EACH	1
11	BREAKAWAY DEVICE WITH ALUMINUM SKIRT	EACH	11
12	LIGHT POLE FOUNDATION, METAL, 11" BOLT CIRCLE, 8 5/8" X 6'	EACH	11
* 13	TREE PROTECTION FENCE	FOOT	500
* 14	COMBINATION CONCRETE CURB AND GUTTER REMOVAL AND REPLACEMENT	FOOT	10
15	TRAFFIC CONTROL AND PROTECTION	L SUM	1
16	ELECTRICAL HANDHOLE	EACH	1
* 17	CLASS D PATCHES, SPECIAL	SQ YD	5
18	MAINTENANCE BOND (24-MONTH)	L SUM	1

* = NOMINAL QUANTITY PROVIDED FOR ADJUSTMENTS DURING CONSTRUCTION

LEGEND

-  EXISTING LIGHT POLE AND LUMINAIRE
 -  EXISTING MAST ARM AND LUMINAIRE MOUNTED ON UTILITY POLE
 -  EXISTING MAST ARM AND LUMINAIRE TO BE REMOVED
 -  LIGHT STANDARD, 25 FT. M.H., 10 FT. CLAMP-ON MAST ARM, LED LUMINAIRE ON LIGHT POLE FOUNDATION, METAL
 -  PROPOSED HANDHOLE
 -  PROPOSED LIGHTING CONTROLLER
 -  PROPOSED UNIT DUCT WITH 2-1/C No. 6 & 1-1/C No. 8 GROUND, 600V (XLP-TYPE USE), 1" DIA. OR AS NOTED
 -  PROPOSED RIGID GALVANIZED STEEL CONDUIT
-  CONTROLLER IDENTIFICATION (TYP.)
 CIRCUIT NUMBER (TYP.)
 POLE NUMBER (TYP.)

DATE PLOTTED = 7/31/2024 5:19:34 PM
 PEN TABLE = NA:\Pro\18021845.tbl
 PLOT CONFIG = NA:\S&B\CAD\Bentley.ctb
 FILE NAME = NA:\PROJ\18021845\11\Lighting\18021845.dwg



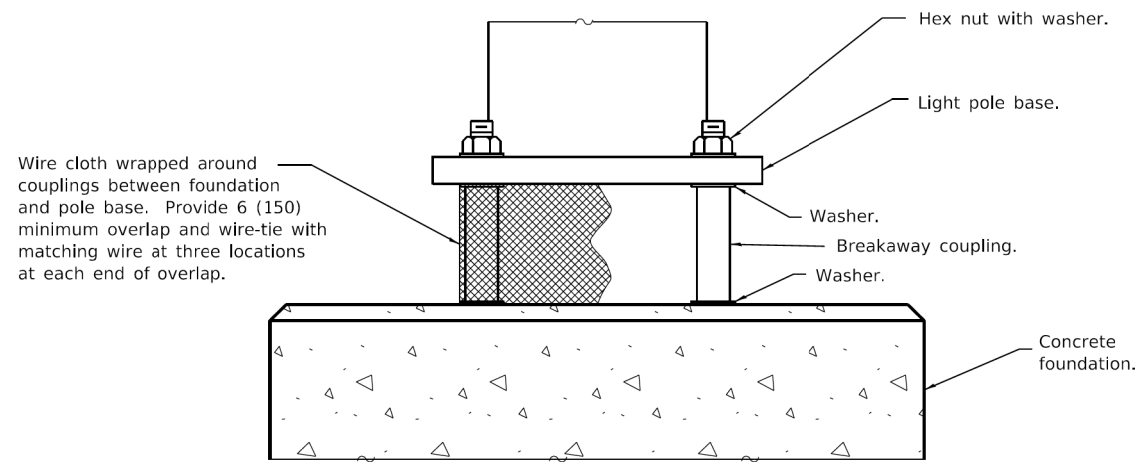
USER NAME = untitled	DESIGNED - AM	REVISED -
	DRAWN - DTJ	REVISED -
PLOT SCALE = 60.0000' / in.	CHECKED - JMV	REVISED -
PLOT DATE = 7/31/2024	DATE - 5/24/2024	REVISED -

**BURNING BUSH LANE
 STREET LIGHTING
 VILLAGE OF MOUNT PROSPECT, ILLINOIS**

GENERAL NOTES, LEGEND, SUMMARY OF QUANTITIES			
SCALE: N.T.S.	SHEET NO.	OF SHEETS	STA. TO STA.

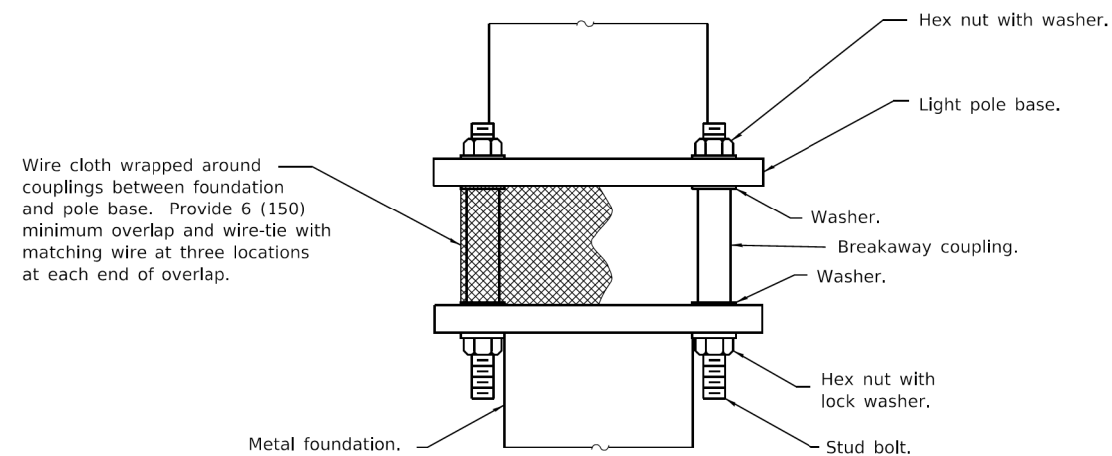
RTE.	SECTION	COUNTY	TOTAL SHEETS	SHEET NO.
		COOK	14	2

ILLINOIS FED. AID PROJECT



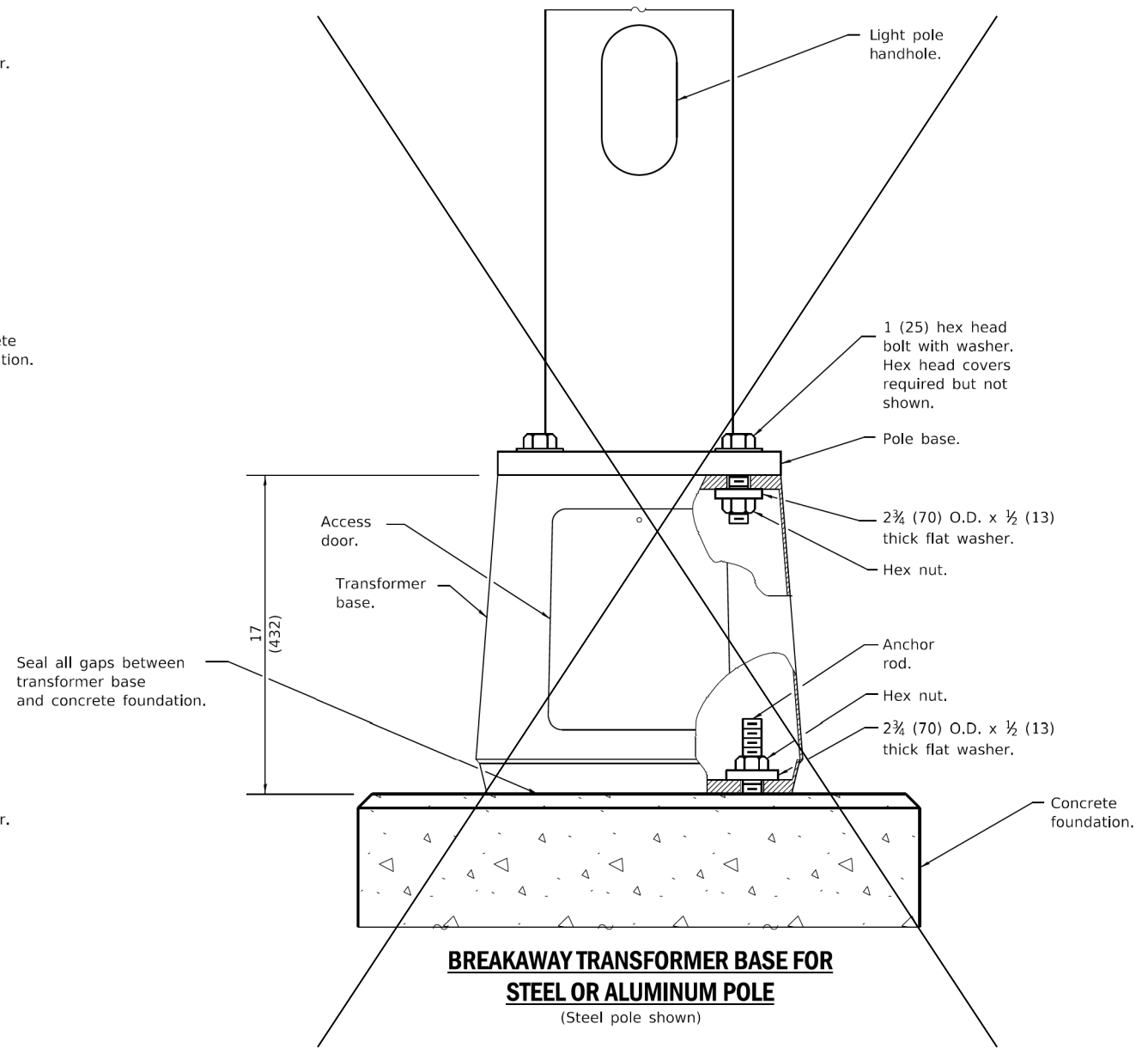
BREAKAWAY COUPLINGS ON CONCRETE FOUNDATION FOR STEEL LIGHT POLE

(Provide pole base skirt around wire cloth when required.)



BREAKAWAY COUPLINGS ON METAL FOUNDATION FOR STEEL POLE

(Provide pole base skirt around wire cloth when required.)



BREAKAWAY TRANSFORMER BASE FOR STEEL OR ALUMINUM POLE

(Steel pole shown)

Illinois Department of Transportation

PASSED January 1, 2018
[Signature]
 ENGINEER OF PRELIMINARY ENGINEERING

APPROVED January 1, 2018
[Signature]
 ENGINEER OF DESIGN AND ENVIRONMENT

ISSUED 1-1-12

DATE	REVISIONS
1-1-18	Revised to show rodent shield installation for aluminum poles.
1-1-14	New Standard.

See Sheet 2 for GENERAL NOTES.

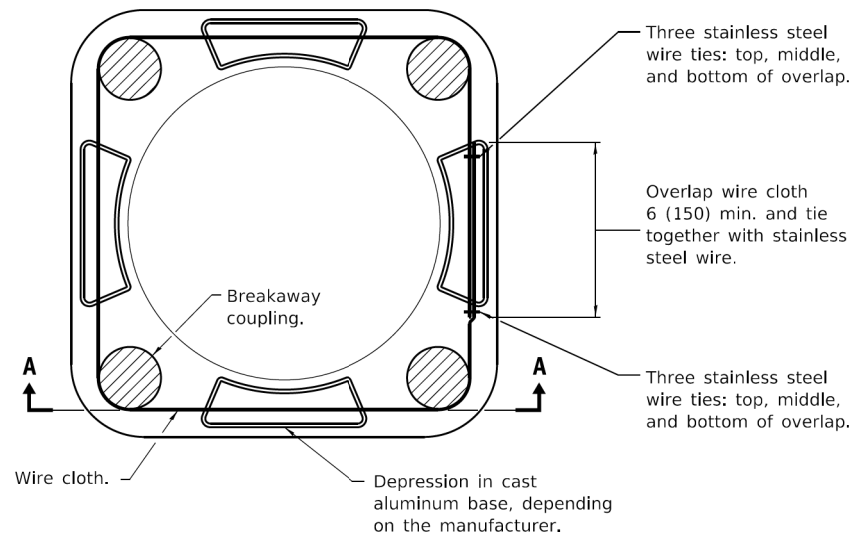
BREAKAWAY DEVICES

(Sheet 1 of 2)

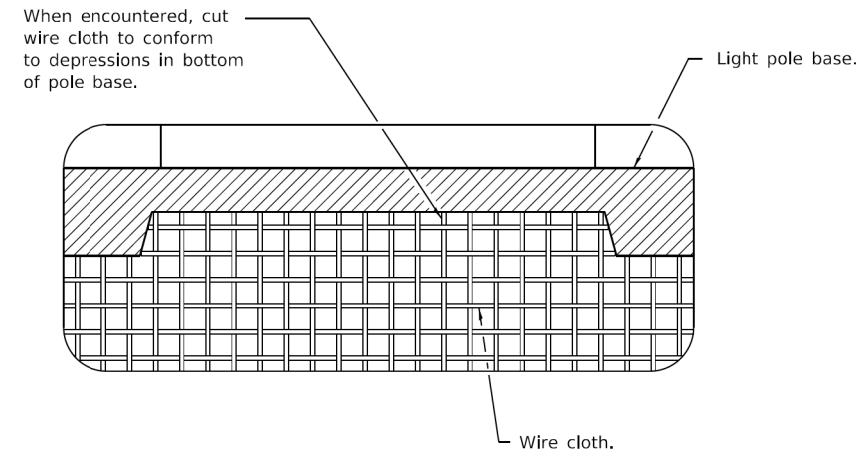
STANDARD 838001-01

DATE PLOTTED = 7/31/2024 5:19:37 PM
 PLOT TABLE =
 FILE NAME =
 C:\Users\jacob\OneDrive\Documents\Illinois\Projects\Lighting\838001-01.dgn

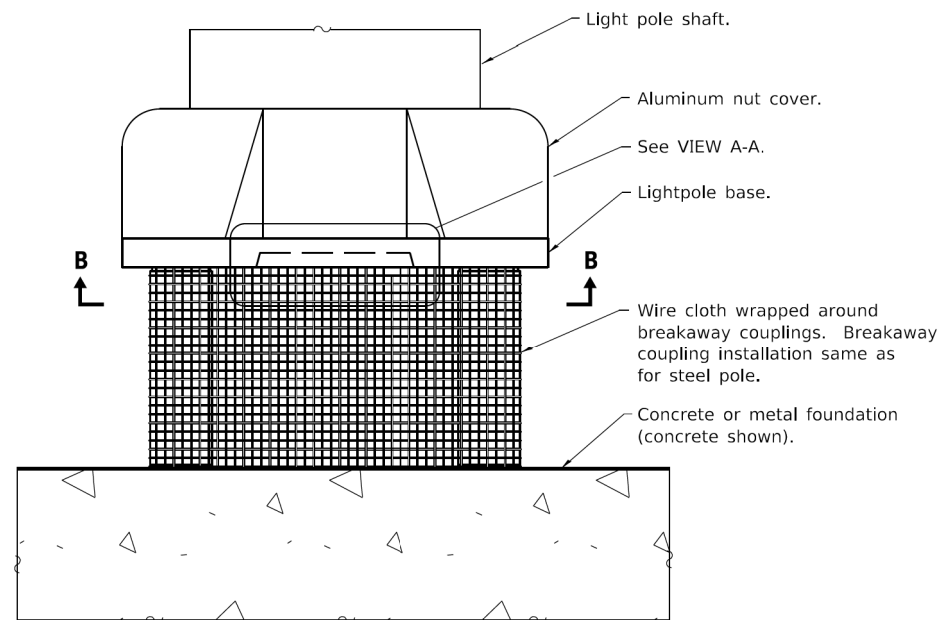
USER NAME = untitled	DESIGNED - AM	REVISED -
PLOT SCALE = 3.3333 / in.	DRAWN - DTJ	REVISED -
PLOT DATE = 7/31/2024	CHECKED - JMV	REVISED -
	DATE - 5/24/2024	REVISED -



VIEW B-B



VIEW A-A



BREAKAWAY COUPLINGS FOR ALUMINUM POLES

(Provide pole base skirt around wire cloth when required.)

GENERAL NOTES

- See light pole standard for details not shown.
- Use largest transformer base bolt circle possible.
- Transformer bases shall not be installed on metal foundations.
- Washers on top of pole base shall cover the entire bolt slot.
- See Standard 836001 for Light Pole Foundation.
- Wire cloth shall be stainless steel, have a maximum opening of 3/4 (6), and have a minimum wire size of AWG No. 16 (1.6).
- All dimensions are in inches (millimeters) unless otherwise shown.

BREAKAWAY DEVICES

(Sheet 2 of 2)

STANDARD 838001-01

Illinois Department of Transportation

PASSED January 1, 2018
[Signature]
 ENGINEER OF PRELIMINARY ENGINEERING

APPROVED January 1, 2018
[Signature]
 ENGINEER OF DESIGN AND ENVIRONMENT

ISSUED 1-1-12

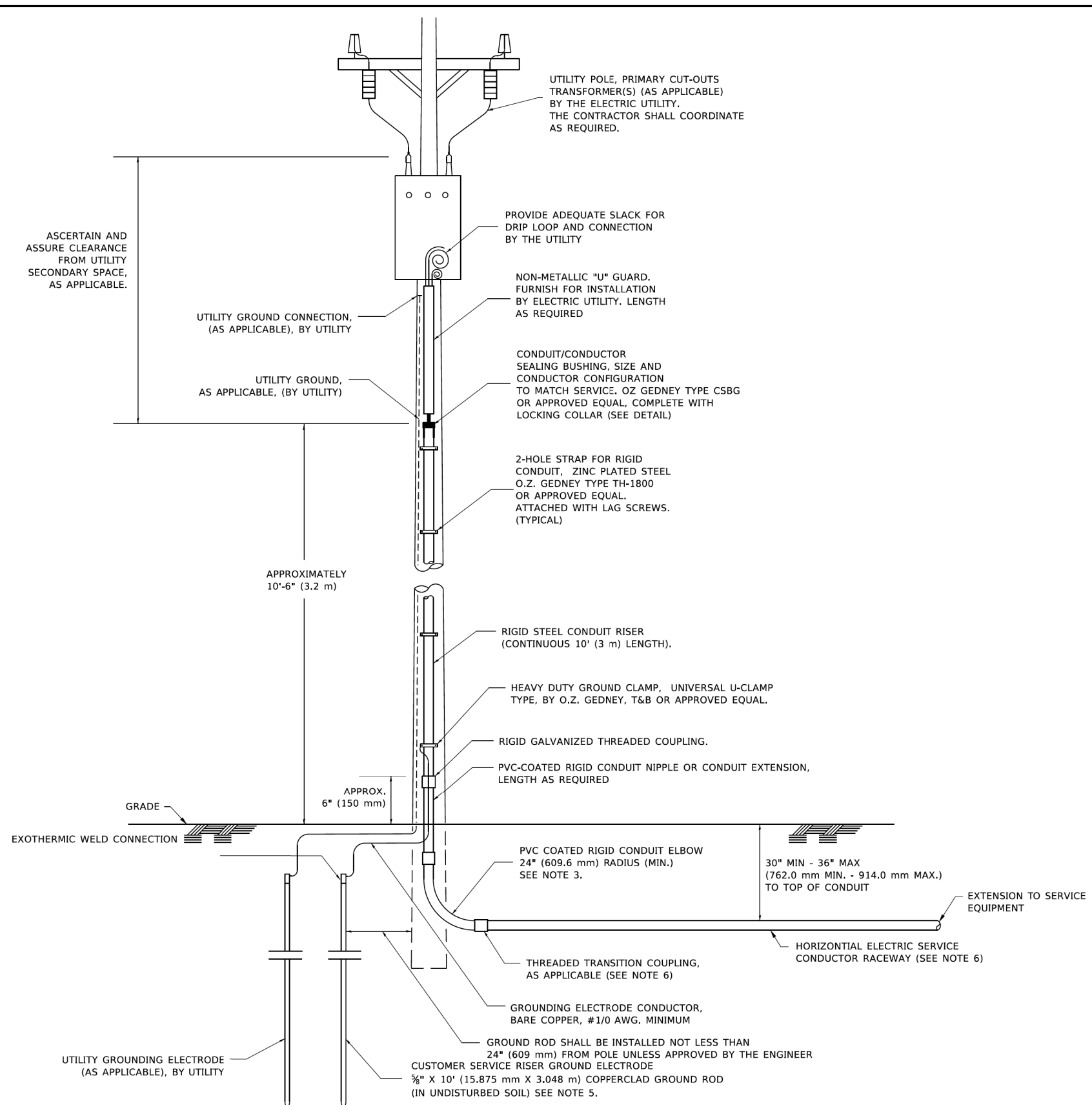
DATE PLOTTED = 7/31/2024 5:19:43 PM
 PEN TABLE = N:\Pro\16021845\01_00021845.tbl
 PLOT CONFIG = N:\S&P\order\CAD\Bentley\spc\order\1-1-12.dgn
 FILE NAME = N:\PROJ\16021845\01_CAD\1-1-12.dgn

USER NAME = untitled	DESIGNED - AM	REVISED -
	DRAWN - DTJ	REVISED -
PLOT SCALE = 3.3333 / in.	CHECKED - JMV	REVISED -
PLOT DATE = 7/31/2024	DATE - 5/24/2024	REVISED -

SCALE: N.T.S.	SHEET NO. 2 OF 9 SHEETS	STA.	TO STA.
---------------	-------------------------	------	---------

RTE.	SECTION	COUNTY	TOTAL SHEETS	SHEET NO.
		COOK	14	4

ILLINOIS FED. AID PROJECT

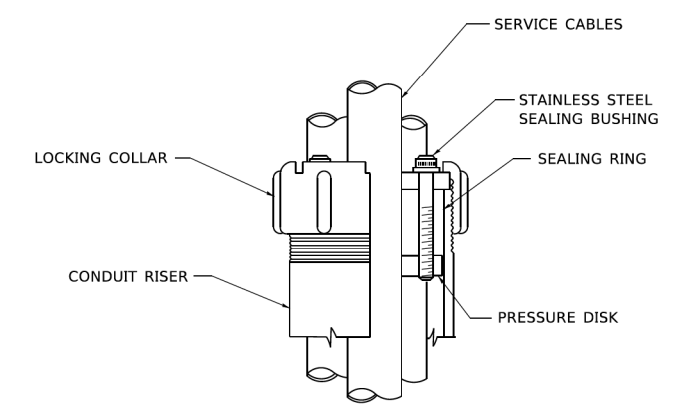


APPLICATION

THIS DETAIL APPLIES FOR LOW VOLTAGE ELECTRIC SERVICE (600 V OR LESS) FROM AN OVERHEAD UTILITY SUPPLY TO SEPERATLY-MOUNTED SERVICE EQUIPMENT.

NOTES

- SERVICE VOLTAGE SHALL BE AS INDICATED ELSEWHERE IN THE DRAWINGS.
- UNLESS OTHERWISE INDICATED, ITEMS AND WORK SHALL BE INCLUDED AND PAID AS PART OF THE ELECTRIC UTILITY SERVICE INSTALLATION PAY ITEM.
- CONDUIT AND CONNECTOR DIAMETER SHALL MATCH THE DIAMETER OF THE SERVICE CONDUCTOR RACEWAY AS INDICATED ON THE PLANS.
- PVC COATED RACEWAYS AND ACCESSORIES SHALL BE CAREFULLY INSTALLED WITH MFR RECOMMENDED TOOLS AND PROCEDURES TO AVOID DAMAGE. ANY DAMAGE SHALL BE REPAIRED WITH COMPATIBLE PVC TOUCH-UP MATERIAL TO THE SATISFACTION OF THE ENGINEER OR THE DAMAGED MATERIAL SHALL BE REPLACED AT NO ADDITIONAL COST.
- THE CONTRACTOR SHALL OBTAIN INSPECTION AND APPROVAL BY THE ENGINEER OF SERVICE RISER GROUND ELECTRODE, RISER ELBOW, NIPPLE AND CONNECTION TO SERVICE CONDUCTOR RACEWAY EXTENSION BEFORE BACKFILL AND SHALL ALSO OBTAIN INSPECTION OF SERVICE RISER AND SEALING BUSHING BEFORE UTILITY "U" GUARD INSTALLATION AND SERVICE CONNECTION.
- THE HORIZONTAL ELECTRIC SERVICE CONDUCTOR RACEWAY SHALL BE AS INDICATED AND SHALL BE MEASURED SEPARATELY FOR PAYMENT. WHEN THE RACEWAY IS PVC-COATED RIGID GALVANIZED STEEL, THE COUPLING SHALL BE THE SAME. WHEN THE RACEWAY IS PVC CONDUIT (IN CONCRETE), THE COUPLING SHALL BE A METALIC TO NON METALIC ADAPTER. WHEN THE RACEWAY IS ENCASED IN CONCRETE, THE CONCRETE SHALL EXTEND TO COVER THE COUPLING.
- PLANS AND DETAILS INDICATE THE GENERAL NATURE AND REQUIREMENTS. THEY DO NOT SHOW EVERY ACCESSORY AND ATTACHMENT, AND THEY DO NOT RELIEVE THE CONTRACTOR OF THE REQUIREMENTS OF THE SPECIFICATIONS AND SPECIAL PROVISIONS TO ASCERTAIN UTILITY REQUIREMENTS AND TO COORDINATE ACCORDINGLY, FURNISHING ALL ITEMS AND WORK NOT PROVIDED BY THE UTILITY, BUT NECESSARY FOR A COMPLETE SERVICE INSTALLATION IS REQUIRED AND SHALL BE INCLUDED IN THE ELECTRIC UTILITY SERVICE INSTALLATION PAY ITEM.



SEALING BUSHING DETAIL

MODEL: Default
 FILE NAME: p:\1\alroom\dot\illinois\gov\p\w\dot\Documents\DOT_Offices\Default_1\Projects\Bldg22x3a\CAD\Bldg\CAC\sheet\be220.dgn

USER NAME = footemj	DESIGNED -	REVISED - 03-03-06
PLOT SCALE = 50.0000" / in.	DRAWN -	REVISED -
PLOT DATE = 4/19/2019	CHECKED - MEA	REVISED -
	DATE -	REVISED -

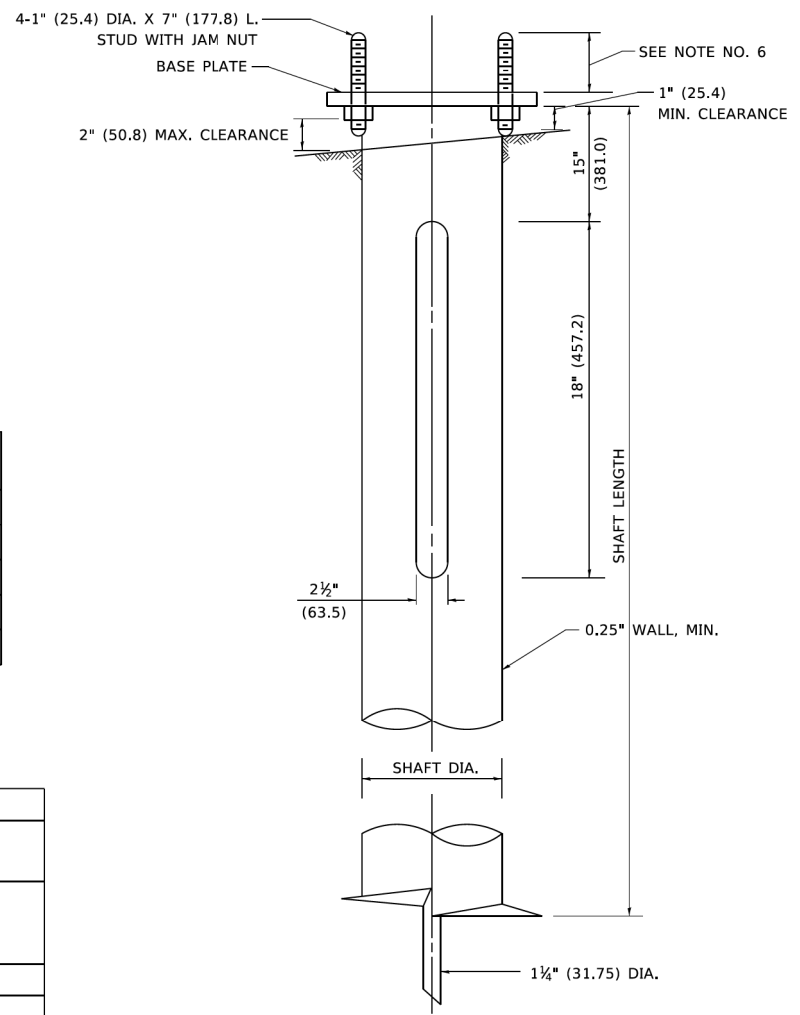
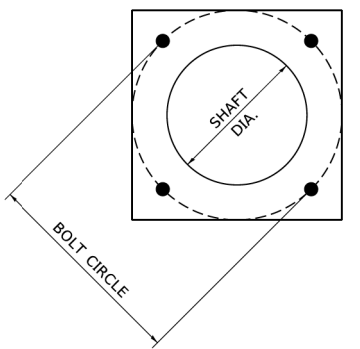
STATE OF ILLINOIS DEPARTMENT OF TRANSPORTATION		ELECTRIC SERVICE INSTALLATION		F.A. RTE.	SECTION	COUNTY	TOTAL SHEETS	SHEET NO.
		AERIAL, REMOTE DISCONNECT		BE-220		CONTRACT NO.		
SCALE: NONE		SHEET 1 OF 1 SHEETS		STA. TO STA.		ILLINOIS FED. AID PROJECT		

DATE PLOTTED = 7/31/2024 5:19:48 PM
 PLOT FILE = N:\Projects\Bldg22x3a\CAD\Bldg\CAC\sheet\be220.dgn
 PLOT SCALE = 50.0000" / in.
 PLOT DATE = 7/31/2024



USER NAME = untitled	DESIGNED - AM	REVISED -
PLOT SCALE = 3.3333" / in.	DRAWN - DTJ	REVISED -
PLOT DATE = 7/31/2024	CHECKED - JMV	REVISED -
	DATE - 5/24/2024	REVISED -

BURNING BUSH LANE STREET LIGHTING VILLAGE OF MOUNT PROSPECT, ILLINOIS		LIGHTING DETAILS		RTE.	SECTION	COUNTY	TOTAL SHEETS	SHEET NO.
		SCALE: N.T.S.		SHEET NO. 3 OF 9 SHEETS		STA. TO STA.		COOK 14 5
						ILLINOIS FED. AID PROJECT		



HELIX FOUNDATION SIZE

POLE MOUNTING HEIGHT	BOLT CIRCLE	SHAFT DIAMETER	SHAFT LENGTH	BASEPLATE
30 FT.	1 1/2"	8 3/8"	6 FT.	12"x12"x1"
31 FT.-35 FT.	1 1/2"	8 3/8"	6 FT.	12"x12"x1"
36 FT.-40FT.	15"	8 3/8"	6 FT.	15"x15"x1 1/4"
41 FT.-45 FT.	15"	8 3/8"	6 FT.	15"x15"x1 1/4"
46 FT.-50 FT.	15"	10"	8 FT.	15"x15"x1 1/4"

METAL HELIX FOUNDATION MATERIALS

ITEM	MATERIAL REQUIREMENT
BASEPLATE	AASHTO M 270M, GRADE 36 (M270M, GRADE 250)
SHAFT	ASTM A 252, GRADE 2 (PHOSPHOROUS 0.04% MAXIMUM, SULFUR 0.05% MAXIMUM)
HELIX SCREW	AASHTO M 183 (ASTM A 635)
PILOT POINT	AASHTO M 270 (ASTM A 575)
ANCHOR RODS/STUDS	AASHTO M 314 (ASTM F 1554)
HEXAGON NUTS	AASHTO M 291M (ASTM A 563) GRADE DH, OR AASHTO M 292 (ASTM A 194) GRADE 2H
WASHERS	AASHTO M 293 (ASTM F 436)

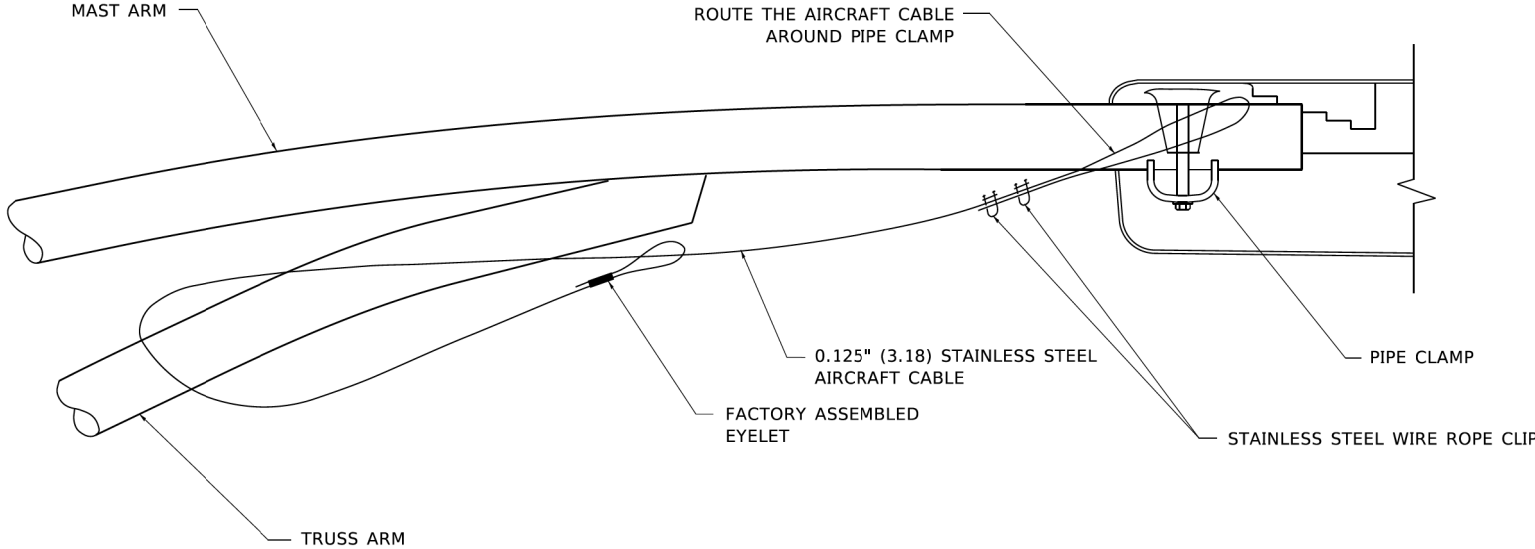
NOTES

- ALL DIMENSION IN INCHES (MILLIMETERS) UNLESS OTHERWISE SHOWN.
- ALL MATERIAL SHALL BE GALVINIZED ACCORDING TO AASHTO M111, UNLESS OTHERWISE SPECIFIED.
- ALL WELDS SHALL BE CONTINUOUS AND NOT LESS THAN 1#4" (6.35 mm) FILLET WELDS. THE WELDED FOUNDATION SHALL BE CAPABLE OF WITHSTANDING 10,000 FT/LBS (13558.18 n.m) OF INSTALLATION TORQUE APPLIED ABOUT THE AXIS OF THE FOUNDATION.
- THE HELIX FOUNDATION SHAFT SHALL BE INSTALLED VERTICAL AND THE BASE PLATE SHALL BE IN LEVEL. THE BREAKAWAY COUPLINGS AND HARDWARE SHALL NOT BE USED TO ALIGN THE POLE INSTALLATION.
- THE CABLE TRENCH SHALL BE BACKFILLED AND FIRMLY COMPACTED BEFORE THE INSTALLATION OF THE LIGHT POLE.
- THE CONTRACTOR SHALL COORDINATE EXTENSION OF ANCHOR BOLTS ABOVE TOP OF THE BASE PLATE WITH THE BREAKAWAY DEVICE MANUFACTURER'S REQUIREMENTS.
- ANY VOIDS WITHIN THE METAL FOUNDATION SHALL BE FILLED WITH FINE AGGREGATE.
- METAL FOUNDATIONS SHALL BE INSTALLED IN UNDISTURBED SOIL. PREDRILLING A PILOT HOLE AND/OR BACKFILLING AROUND THE FOUNDATION IS NOT ALLOWED.
- THE METAL FOUNDATION SHALL NOT BE INSTALLED TO A TORQUE WHICH EXCEEDS THE MANUFACTURER'S MAXIMUM TORQUE RATING NOR SHALL IT BE INSTALLED TO AN INSTALLATION TORQUE VALUE OF LESS THAN 3,500 FT LB (4,750 KNM). METAL FOUNDATIONS THAT ARE NOT INSTALLED TO FULL INSTALLATION DEPTH OR DO NOT ACHIEVE THE MINIMUM INSTALLATION TORQUE SHALL BE REMOVED AND REPLACED WITH A CONCRETE FOUNDATION AT NO ADDITIONAL COST.
- THE BASEPLATE SHALL BE PERPENDICULAR TO THE SHAFT AXIS (± 1°) AND THE HOLE CENTERLINE SHALL BE CONCENTRIC (± 0.188) TO THE SHAFT AXIS.
- THE PILOT POINT AND SHAFT AXIS SHALL BE CONCENTRIC (± 0.125) AND IN LINE (± 2°).
- THE BASEPLATE SHALL BE STAMPED WITH THE MANUFACTURERS NAME AND DATE OF MANUFACTURE.

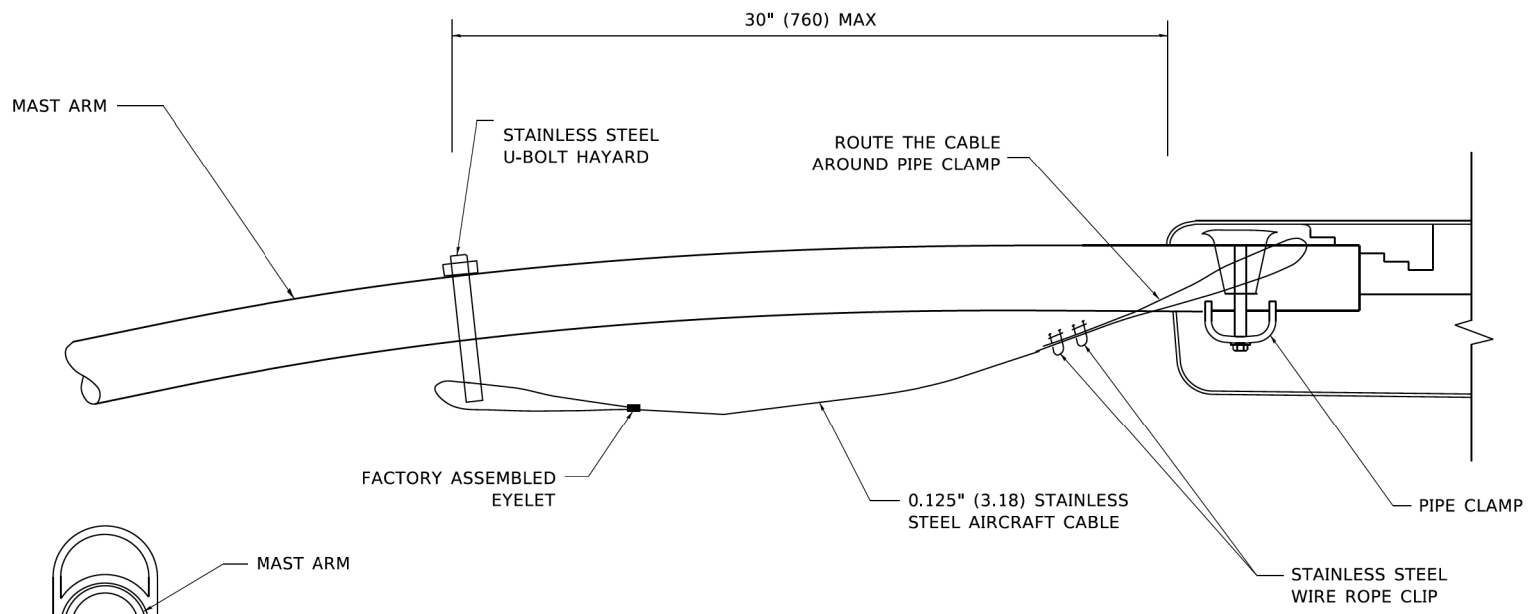
DATE PLOTTED = 7/21/2024 5:19:54 PM
 PLOT SCALE = 50.0000 " / in.
 PLOT DATE = 7/31/2024

USER NAME = footemj PLOT SCALE = 50.0000 " / in. PLOT DATE = 4/19/2019	DESIGNED - DRAWN - DLB CHECKED - DATE - 02-27-07	REVISED - REVISED - REVISED - REVISED -	STATE OF ILLINOIS DEPARTMENT OF TRANSPORTATION	LIGHT POLE FOUNDATION, METAL SCALE: NONE SHEET 1 OF 1 SHEETS STA. TO STA.	F.A. RTE. SECTION COUNTY TOTAL SHEETS SHEET NO. BE-305 CONTRACT NO. ILLINOIS FED. AID PROJECT
--	---	--	---	---	--

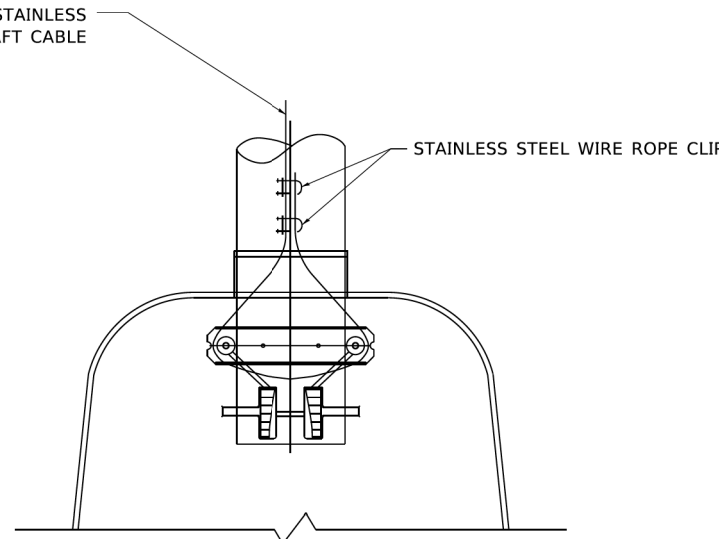
USER NAME = untitled PLOT SCALE = 3.3333 " / in. PLOT DATE = 7/31/2024	DESIGNED - AM DRAWN - DTJ CHECKED - JMV DATE - 5/24/2024	REVISED - REVISED - REVISED - REVISED -	BURNING BUSH LANE STREET LIGHTING VILLAGE OF MOUNT PROSPECT, ILLINOIS	LIGHTING DETAILS SCALE: N.T.S. SHEET NO. 4 OF 9 SHEETS STA. TO STA.	RTE. SECTION COUNTY TOTAL SHEETS SHEET NO. COOK 14 6 ILLINOIS FED. AID PROJECT
--	---	--	--	---	---



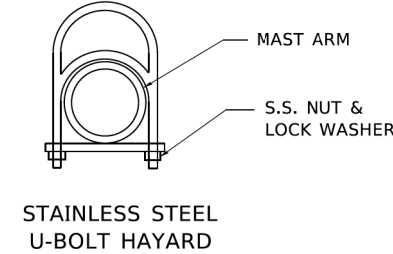
SIDE VIEW (TRUSS ARM)
N.T.S.



SIDE VIEW (SINGLE MEMBER OR DAVIT ARM)
N.T.S.



BOTTOM VIEW
N.T.S.



STAINLESS STEEL U-BOLT HAYARD

NOTES:

1. ALL DIMENSIONS ARE IN MILLIMETERS (INCHES) UNLESS OTHERWISE SHOWN.
2. CONTRACTOR SHALL ADJUST THE WIRE CLIP TO ELIMINATE ANY SLACK FROM THE WIRE ROPE.
3. THE 0.125\" (3.18) STAINLESS STEEL AIRCRAFT CABLE SHALL REMAIN VISIBLE FROM THE GROUND LEVEL.
4. THE BREAKING STRENGTH OF THE CABLE SHALL BE 1700 LBS. MIN.

DATE PLOTTED = 7/31/2024 5:28:09 PM
 PLOT TABLE = AS:\Projects\CAD\Bentley\systems\lil-001\plotting\ccl-plc-fg-plot.ctb
 PLOT CONFIG = AS:\Projects\CAD\Bentley\systems\lil-001\plotting\ccl-plc-fg-plot.ctb
 FILE NAME = AS:\Projects\CAD\Bentley\systems\lil-001\plotting\ccl-plc-fg-plot.ctb

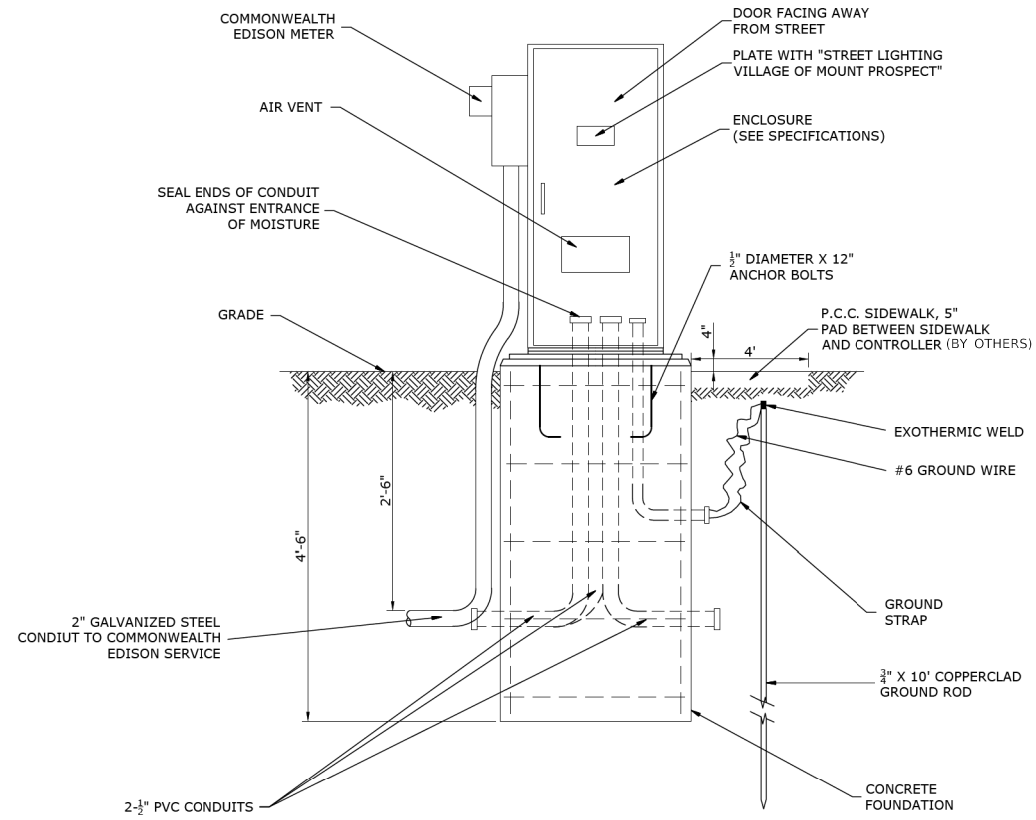
MODEL Default
 FILE NAME: p:\projects\pilot\m1\lil-001\plotting\ccl-plc-fg-plot.ctb

USER NAME = footemj	DESIGNED -	REVISED - 08-08-03
	DRAWN -	REVISED -
PLOT SCALE = 50.0000 * / in.	CHECKED -	REVISED -
PLOT DATE = 4/19/2019	DATE -	REVISED -

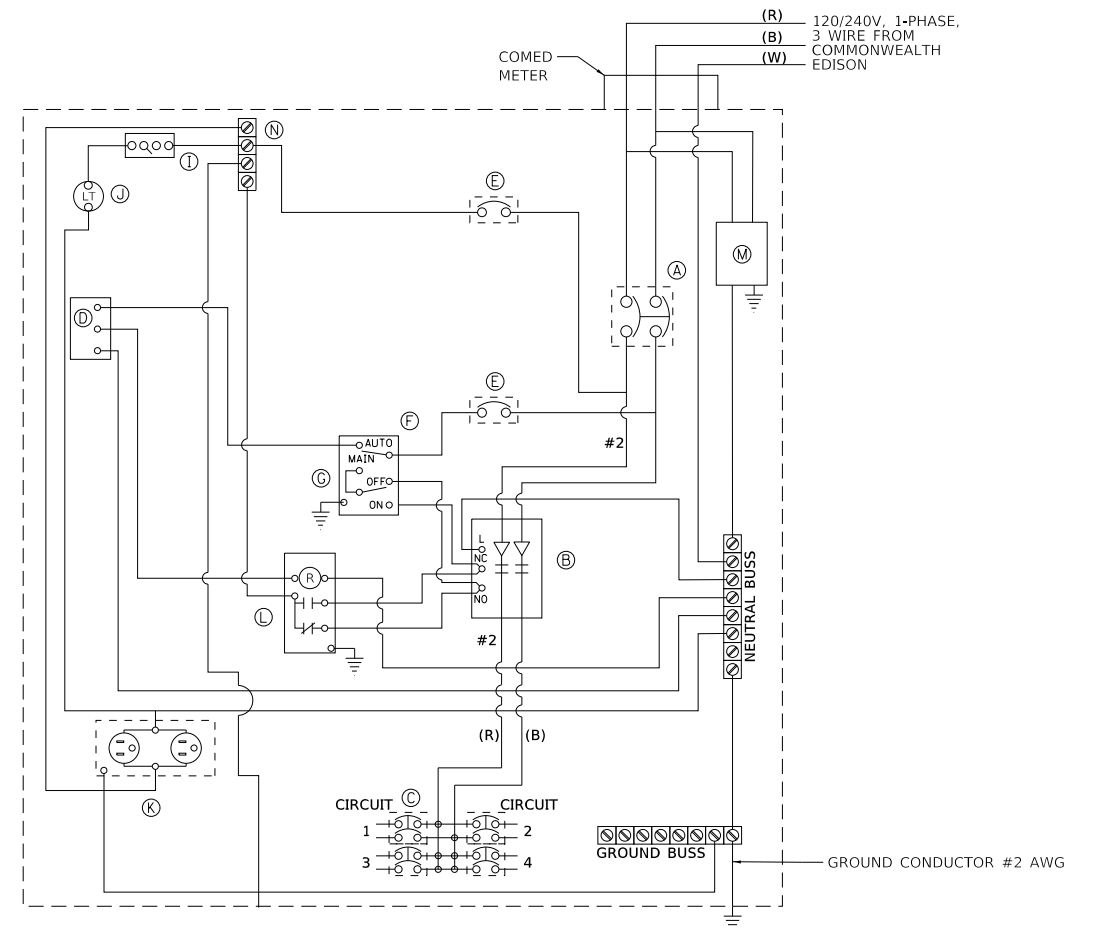
STATE OF ILLINOIS DEPARTMENT OF TRANSPORTATION		LUMINAIRE SAFETY CABLE ASSEMBLY		F.A. RTE.	SECTION	COUNTY	TOTAL SHEETS	SHEET NO.
SCALE: NONE		SHEET 1 OF 1 SHEETS		BE-701		CONTRACT NO.		
				ILLINOIS		FED. AID PROJECT		

USER NAME = untitled	DESIGNED - AM	REVISED -
	DRAWN - DTJ	REVISED -
PLOT SCALE = 3.3333 * / in.	CHECKED - JMV	REVISED -
PLOT DATE = 7/31/2024	DATE - 5/24/2024	REVISED -

LUMINAIRE SAFETY CABLE ASSEMBLY		F.A. RTE.	SECTION	COUNTY	TOTAL SHEETS	SHEET NO.
SCALE: N.T.S.		SHEET NO. 5 OF 9 SHEETS		COOK 14 7		
				ILLINOIS		



ELEVATION
LIGHTING CONTROLLER & FOUNDATION



DEVICE SCHEDULE		
	QUANTITY	DESCRIPTION
(A)	1	100 AMP CIRCUIT BREAKER, MOLDED CASE, THERMAL MAGNETIC, 2-POLE, SINGLE THROW, 600V FRAME, NON-INTERCHANGABLE TRIP, BOLT ON TYPE.
(B)	1	100 AMP, ELECTRICALLY OPERATED AND MECHANICALLY HELD LIGHTING CONTRACTOR, 2-POLE, 600 VOLT WITH 120 V COIL
(C)	4	120/240 VOLT 1 PHASE PANEL BOARD WITH 100 AMP COPPER MAINS TWO POLE, 30 AMP, 120 VOLT BOLT ON BRANCH CIRCUIT BREAKERS
(D)	1	TERMINAL BLOCK FOR REMOTE PHOTOCELL
(E)	2	THERMAL MAGNETIC, MOLDED CASE CIRCUIT BREAKER, 1 POLE, 15 AMP, 120 VOLT BOLT ON TYPE
(F)	1	CONTROL SWITCH, MOMENTARY CONTACT, SPDT, 15 AMP, 120 VOLT
(G)	1	CONTROL SWITCH, TOGGLE TYPE, SPDT, 20 AMP, 120 VOLT SPECIAL GRADE
(I)	1	MICRO SWITCH (MOUNTED WITH ACTUATOR TO SWITCH WHEN DOOR IS OPEN) 120 VOLT, 20 AMP
(J)	1	LED LIGHT FIXTURE VAPOR TIGHT WITH GLOBE, GUARD, AND MOUNTING BOX
(K)	1	120 VOLT, 20 AMP RECEPTACLE, SPECIFICATION GRADE IN NEMA 5-15R WEATHER PROOF BOX WITH FLAP-TYPE COVER. OUTLET TO BE GFI-TYPE.
(L)	1	POWER RELAY WITH 25 AMP CONTACTS RATED FOR CONTRACTOR INRUSH CURRENT - 120 VOLT COIL
(M)	1	SURGE ARRESTOR, 5 WIRE EDCO "4803 OR EQUAL
(N)	1	TERMINAL BLOCK, 120 VOLT, 50 AMP MAXIMUM WITH NUMBER OF TERMINALS AS INDICATED

NOTES:

- ALL CIRCUIT BREAKERS SHALL HAVE AN INTERRUPT RATING OF 18,000 AMPS
- UL LISTED DEVICES/COMPONENTS SHALL BE USED
- NO SPLICES OF WIRES IN CABINET
- CONTROL WIRE TO BE #12 MTW
- POWER WIRE SHALL BE RATED RHH/RHW 600 VOLTS OF SIZE INDICATED
- LIGHTING CONTROLLER SHALL BE SERVICE ENTRANCE RATED
- PANEL SHALL BE DEAD FRONT TO ALLOW OPERATION OF HOA SWITCH

120/240 VOLT CONTROLLER PANEL WIRING DIAGRAM

DATE PLOTTED = 7/31/2024 5:29:07 PM
 PEN TABLE = N:\Pro\1\0021845.tbl
 PLOT CONFIG = N:\S\standards\CAD\Bentley\standards\1-001\plotting\ccl-pbf-pbf.plt
 FILE NAME = N:\PROJ\0021845\01\CAD\01\Sht 11 Lighting\0021845_01.sht-11.dwg

USER NAME = untitled	DESIGNED - AM	REVISED -
	DRAWN - DTJ	REVISED -
PLOT SCALE = 3.3333 ' / in.	CHECKED - JMV	REVISED -
PLOT DATE = 7/31/2024	DATE - 5/24/2024	REVISED -

SCALE: N.T.S.		SHEET NO. 6 OF 9 SHEETS		STA. TO STA.	
---------------	--	-------------------------	--	--------------	--

RTE.	SECTION	COUNTY	TOTAL SHEETS	SHEET NO.
		COOK	14	8

DATE PLOTTED = 7/31/2024 5:29:17 PM
 PEN TABLE = N:\Projects\2024\52917_P10\Drawings\Lighting\RTA25D8B4T1A.dwg
 PLOT CONFIG = N:\Projects\2024\52917_P10\Drawings\Lighting\RTA25D8B4T1A.dwg
 FILE NAME = N:\Projects\2024\52917_P10\Drawings\Lighting\RTA25D8B4T1A.dwg

RTA Round Tapered Aluminum Pole with Arms Single Truss — 4-Bolt Base

WARNING: Do not install light pole without luminaire. *Satin Aluminum or Powder Coated Finish per Customer Specification.*

A	B	C	J	LUM.	MAXIMUM EPA	D/D	CATALOG NUMBER				
Mts. Hgt.	Wall Thickness	Butt Diameter	Arm Length	Weight	90	100	110	120	130	Cat. Number	Catalog Number
25	0.188"	8	10'	40	3.6	2.8	2.4	1.8	1.4	31-198	RTA25D8B4T1A**

C	D	F	G	H	I
Butt Dia.	Top Dia.	Bolt Cir. Dia.	Base Sq.	Bolt Proj.	Bolt Size
8	4.5	11 - 12	11.25	2.75	1 x 36 x 4

CUSTOMER NAME: PROJECT: LOCATION: QUANTITY:

NOTES:

EPA Notes: Effective Projected Area (EPA) in square feet. EPA's calculated using wind velocity (mph) indicated in accordance with 2009 AASHTO LTS-5 using a 25 year design life. Maximum EPA is based on the luminaire weight shown. Increased luminaire weight may reduce the maximum EPA. If weight is exceeded, or if other design life or code is required, please consult the factory.

hapco 26252 Hillman Highway Abingdon, VA 24210 800.368.7171 www.hapco.com

10' ARM

RTA25D8B4T1A

CATALOG NUMBER FINISH

Pole
Shaft and arm will be constructed of seamless extruded tube of 6063 Aluminum Alloy per the requirements of ASTM B221. The shaft assembly shall be full-length heat treated after base weld to produce a T6 temper.

Base Style
4-Bolt Cast Aluminum Base Flange of Alloy 356-T6 with Aluminum Bolt Covers (Alloy 356-F) and Stainless Steel Hex Head Attaching Screws.

Handhole
Reinforced, 4" x 6" curved Cast Aluminum Frame (Alloy 356-T6) with Aluminum Door and two (2) SS Hex Head Screws. Reinforced Frame will contain a tapped 3/8"-16NC Grounding Provision.

Anchorage
Anchorage Kit will include four (4) L-shaped Steel Anchor Bolts conforming to AASHTO M314-90 Grade 55. Ten inches (10") of threaded end will be galvanized per ASTM A153. Kits will contain four (4) Hex Nuts, four (4) Lock Washers, and four (4) Flat Washers (all components Galvanized Steel). A bolt circle template will be provided.

Vibration Damper
When determined necessary by Hapco, a Vibration Damper will be factory-installed inside the pole shaft. Customer specification of the damper is available.

Finish
O1 = Satin Aluminum
BA = Black Powder Coat
BH = White Powder Coat
BM = Dark Bronze Powder Coat
BV = Dark Green Powder Coat
GC = Gray Powder Coat
** = Specify Finish

WARNING: Do not install light pole without luminaire. *Satin Aluminum or Powder Coated Finish per Customer Specification.*

A	B	C	J	LUM.	MAXIMUM EPA	D/D	CATALOG NUMBER				
Mts. Hgt.	Wall Thickness	Butt Diameter	Arm Length	Weight	90	100	110	120	130	Cat. Number	Catalog Number
25	0.188"	8	12'	40	3.8	2.8	2.5	1.8	1.4	31-199	RTA25D8B4T1C**

C	D	F	G	H	I
Butt Dia.	Top Dia.	Bolt Cir. Dia.	Base Sq.	Bolt Proj.	Bolt Size
8	4.5	11 - 12	11.25	2.75	1 x 36 x 4

CUSTOMER NAME: PROJECT: LOCATION: QUANTITY:

NOTES:

EPA Notes: Effective Projected Area (EPA) in square feet. EPA's calculated using wind velocity (mph) indicated in accordance with 2009 AASHTO LTS-5 using a 25 year design life. Maximum EPA is based on the luminaire weight shown. Increased luminaire weight may reduce the maximum EPA. If weight is exceeded, or if other design life or code is required, please consult the factory.

hapco 26252 Hillman Highway Abingdon, VA 24210 800.368.7171 www.hapco.com

12' ARM

RTA Round Tapered Aluminum Pole with Arms Single Truss — 4-Bolt Base

WARNING: Do not install light pole without luminaire. *Satin Aluminum or Powder Coated Finish per Customer Specification.*

A	B	C	J	LUM.	MAXIMUM EPA	D/D	CATALOG NUMBER				
Mts. Hgt.	Wall Thickness	Butt Diameter	Arm Length	Weight	90	100	110	120	130	Cat. Number	Catalog Number
25	0.188"	8	15'	40	2.8	1.9	1.6	1.1	0.6	31-239	RTA25D8C4T1E**

C	D	F	G	H	I
Butt Dia.	Top Dia.	Bolt Cir. Dia.	Base Sq.	Bolt Proj.	Bolt Size
8	6	11 - 12	11.25	2.75	1 x 36 x 4

CUSTOMER NAME: PROJECT: LOCATION: QUANTITY:

NOTES:

EPA Notes: Effective Projected Area (EPA) in square feet. EPA's calculated using wind velocity (mph) indicated in accordance with 2009 AASHTO LTS-5 using a 25 year design life. Maximum EPA is based on the luminaire weight shown. Increased luminaire weight may reduce the maximum EPA. If weight is exceeded, or if other design life or code is required, please consult the factory.

hapco 26252 Hillman Highway Abingdon, VA 24210 800.368.7171 www.hapco.com

15' ARM

RTA25D8C4T1E

CATALOG NUMBER FINISH

Pole
Shaft and arm will be constructed of seamless extruded tube of 6063 Aluminum Alloy per the requirements of ASTM B221. The shaft assembly shall be full-length heat treated after base weld to produce a T6 temper.

Base Style
4-Bolt Cast Aluminum Base Flange of Alloy 356-T6 with Aluminum Bolt Covers (Alloy 356-F) and Stainless Steel Hex Head Attaching Screws.

Handhole
Reinforced, 4" x 6" curved Cast Aluminum Frame (Alloy 356-T6) with Aluminum Door and two (2) SS Hex Head Screws. Reinforced Frame will contain a tapped 3/8"-16NC Grounding Provision.

Anchorage
Anchorage Kit will include four (4) L-shaped Steel Anchor Bolts conforming to AASHTO M314-90 Grade 55. Ten inches (10") of threaded end will be galvanized per ASTM A153. Kits will contain four (4) Hex Nuts, four (4) Lock Washers, and four (4) Flat Washers (all components Galvanized Steel). A bolt circle template will be provided.

Vibration Damper
When determined necessary by Hapco, a Vibration Damper will be factory-installed inside the pole shaft. Customer specification of the damper is available.

Finish
O1 = Satin Aluminum
BA = Black Powder Coat
BH = White Powder Coat
BM = Dark Bronze Powder Coat
BV = Dark Green Powder Coat
GC = Gray Powder Coat
** = Specify Finish

WARNING: Do not install light pole without luminaire. *Satin Aluminum or Powder Coated Finish per Customer Specification.*

A	B	C	J	LUM.	MAXIMUM EPA	D/D	CATALOG NUMBER				
Mts. Hgt.	Wall Thickness	Butt Diameter	Arm Length	Weight	90	100	110	120	130	Cat. Number	Catalog Number
25	0.188"	8	15'	40	2.8	1.9	1.6	1.1	0.6	31-239	RTA25D8C4T1E**

C	D	F	G	H	I
Butt Dia.	Top Dia.	Bolt Cir. Dia.	Base Sq.	Bolt Proj.	Bolt Size
8	6	11 - 12	11.25	2.75	1 x 36 x 4

CUSTOMER NAME: PROJECT: LOCATION: QUANTITY:

NOTES:

EPA Notes: Effective Projected Area (EPA) in square feet. EPA's calculated using wind velocity (mph) indicated in accordance with 2009 AASHTO LTS-5 using a 25 year design life. Maximum EPA is based on the luminaire weight shown. Increased luminaire weight may reduce the maximum EPA. If weight is exceeded, or if other design life or code is required, please consult the factory.

hapco 26252 Hillman Highway Abingdon, VA 24210 800.368.7171 www.hapco.com



USER NAME = untitled	DESIGNED - AM	REVISED -
PLOT SCALE = 3.3333 / in.	DRAWN - DTJ	REVISED -
PLOT DATE = 7/31/2024	CHECKED - JMV	REVISED -
	DATE - 5/24/2024	REVISED -

BURNING BUSH LANE STREET LIGHTING VILLAGE OF MOUNT PROSPECT, ILLINOIS

SCALE: N.T.S.	SHEET NO. 7 OF 9 SHEETS	STA. TO STA.
---------------	-------------------------	--------------

RTE.	SECTION	COUNTY	TOTAL SHEETS	SHEET NO.
		COOK	14	9

ILLINOIS FED. AID PROJECT



Project
Type
Catalog No.

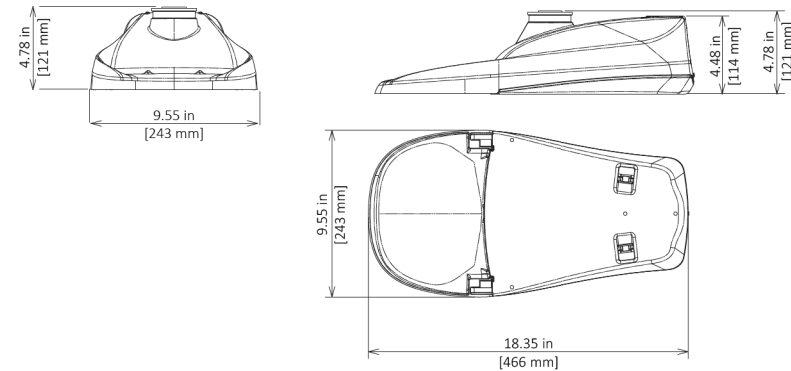


ComfortView™ Neighborhood LED Streetlight (CV)

ComfortView™ Neighborhood LED Streetlight (CV)

Luminaire Data

Weight 8lbs [3.6kg]
EPA 0.39 ft²



Ordering Information

Sample Catalog No. CV1-H-MV-40K-2R-GY-045-FOC

Product	LED Code	Voltage	Color Temperature	Distribution	Finish ¹	Output Code ²	Options
CV1	H	MV 120-277V	22K 2200K	2R Type 2	GY Gray	025	FOC ³ Fixed Output Code
		HV 347-480V	27K 2700K 30K 3000K 40K 4000K	3R Type 3	DB Dark Bronze BK Black	030 035 040 045	LPCR Less Photocontrol Receptacle PCR7 ⁴ ANSI 7-wire Photo-control Receptacle PCR7-CR ⁵ Control Ready 7-wire PC Receptacle
						Midblock 050 055 060 Intersection 070 075 080	WL Utility Wattage Label 4B 4-Bolt Mounting Bracket RWG Rubber Wildlife Guard SWTB Straight Wire Terminal Block BBL Bubble Level CF ⁶ Coastal Paint Finish

Notes:

- Gray, Black, and Dark Bronze standard. Consult factory for other finishes.
- Specified output code is the factory set lumen performance. Field adjustable is standard via an eight-position output selector. Refer to output data table on this spec sheet. An illustration of the output selector and its label is shown on page 2. Consult factory if special output setting is required.
- Non-field adjustable, fixed lumen output. Specify required output code. Not available with PCR7-CR option.
- Includes output selector that enables field adjustability of light levels. Includes connectors to allow easy upgrade of wireless dimming via PCR7. Wireless node by others.
- Control-ready wired at factory for wireless node dimming (node by others). Output selector not included in the fixture. Not able to adjust above specified drive current.
- Specify the CF Option for coastal installation. See warranty for details.
- Flush mounted Cul-de-Sac Shield cuts light off at 1 times the mounting height behind the luminaire, 1¼ in front, and 2¼ times the mounting height laterally.
- Flush mounted Front Side Shield cuts light off at approximately 1½ times the mounting height in front of the luminaire (street side) and 2¼ times the mounting height laterally.
- Flush mounted House Side Shield cuts light off at 1 times the mounting height behind the luminaire and 2¼ times the mounting height laterally.
- 80 Degree Cutoff Shield mitigates high angle glare above 80 degrees from nadir and cuts light off at 1½ times the mounting height behind and 2¼ times the mounting height laterally.
- Specify Color (GY, DB, BK)
- Specify MV (120-277V) or HV (347-480V).

Accessories*	
CSSCV ⁷	Cul-De-Sac Side Shield, Snap-On*
FSSCV ⁸	Front Side Shield, Snap-On*
HSSCV ⁹	House Side Shield, Snap-On*
VHCS ¹⁰	80 Degree Cutoff Shield, Grey*
PTB ¹¹	Pole Top Tenon Horizontal Arm Bracket
PTB2 ¹¹	Pole Top Tenon Horizontal Arm Bracket (2@180°)
RPB ¹¹	Round Pole Horizontal Arm Bracket
SPB ¹¹	Square Pole Horizontal Arm Bracket
WB ¹¹	Wall Horizontal Arm Bracket
LLPC ¹²	Long-Life Twist Lock Photocontrol
SC	Twist Lock Shorting Cap
BSK	Bird Deterrent Spider Kit

*Accessories are ordered separately and not to be included in the catalog number. For factory installed HSSCV, CSSCV, FSSCV and VHCS specify as option in luminaire catalog number. HSSCV, CSSCV, FSSCV can be installed without a tool, but a tool is required for removal. 80 Degree Cutoff Shield (VHCS) requires a Phillips head screwdriver for installation.



©2024 LEOTEK Electronics USA. Specifications subject to change without notice. ComfortView_Series_Specification Sheet_2-7-2024. *2700 and 3000K ComfortView fixtures are certified as Community Friendly Lighting Equipment by the Smart Outdoor Lighting Alliance (SOLA).

Performance Data¹

All data nominal. IES files for all CCTs available at leotek.com.

Product	Color Temperature (CCT)	Output Code	Dial Selection	System Wattage (W)	Delivered Lumens (Lm) ²	Efficacy (Lm/W)	Field Adjustable Output Range
CV1-H	2200 (22K)	020	1	19	2087	110	Midblock
		025	2	24	2693	112	
		030	3	29	3224	111	
		040	4	34	3876	114	
		043	5	38	4222	111	
		045	6	43	4653	108	
		050	7	48	5101	106	
		065	8	66	6722	102	
	2700K (27K)	025	1	19	2242	118	Intersection
		030	2	24	2892	120	
		035	3	29	3463	119	
		040	4	34	4163	122	
		045	5	38	4535	119	
		050	6	43	4998	116	
		055	7	48	5479	114	
		070	8	66	7220	110	
	3000K (30K)	025	1	19	2412	127	Intersection
		030	2	24	3073	128	
		035	3	29	3676	127	
		045	4	35	4423	128	
		050	5	38	4777	126	
		055	6	45	5561	124	
		060	7	49	5800	118	
		075	8	67	7722	115	
4000K (40K)	025	1	19	2675	139	Intersection	
	035	2	24	3294	137		
	040	3	29	3930	136		
	045	4	34	4561	134		
	050	5	38	5059	133		
	055	6	43	5594	130		
	060	7	48	6147	128		
	080	8	67	8227	123		

Notes:

- Data shown above is for type 2 optic. For type 3 optic, consult IES files for specific data at Leotek.com
- Nominal lumens. Normal tolerance ± 10% due to factors including LED bin variance, and ambient temperatures.

©2024 LEOTEK Electronics USA. Specifications subject to change without notice. ComfortView_Series_Specification Sheet_2-7-2024.

DATE PLOTTED = 7/21/2024 5:29:23 PM
 PLOT FILE = N:\Projects\2024\CV1-H-MV-40K-2R-GY-045-FOC\CV1-H-MV-40K-2R-GY-045-FOC.dgn
 PLOT CONFIG = N:\Projects\2024\CV1-H-MV-40K-2R-GY-045-FOC\CV1-H-MV-40K-2R-GY-045-FOC.ctb
 FILE NAME = N:\Projects\2024\CV1-H-MV-40K-2R-GY-045-FOC\CV1-H-MV-40K-2R-GY-045-FOC.dgn



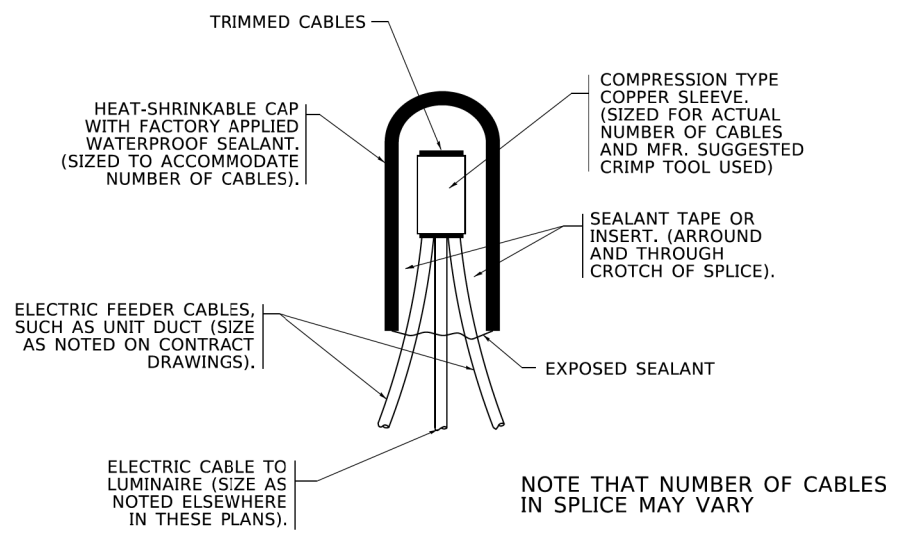
USER NAME = untitled	DESIGNED - AM	REVISED -
PLOT SCALE = 3.3333 1/ in.	DRAWN - DTJ	REVISED -
PLOT DATE = 7/31/2024	CHECKED - JMV	REVISED -
	DATE - 5/24/2024	REVISED -

**BURNING BUSH LANE
STREET LIGHTING
VILLAGE OF MOUNT PROSPECT, ILLINOIS**

SCALE: N.T.S.		SHEET NO. 8 OF 9 SHEETS		STA. TO STA.	
---------------	--	-------------------------	--	--------------	--

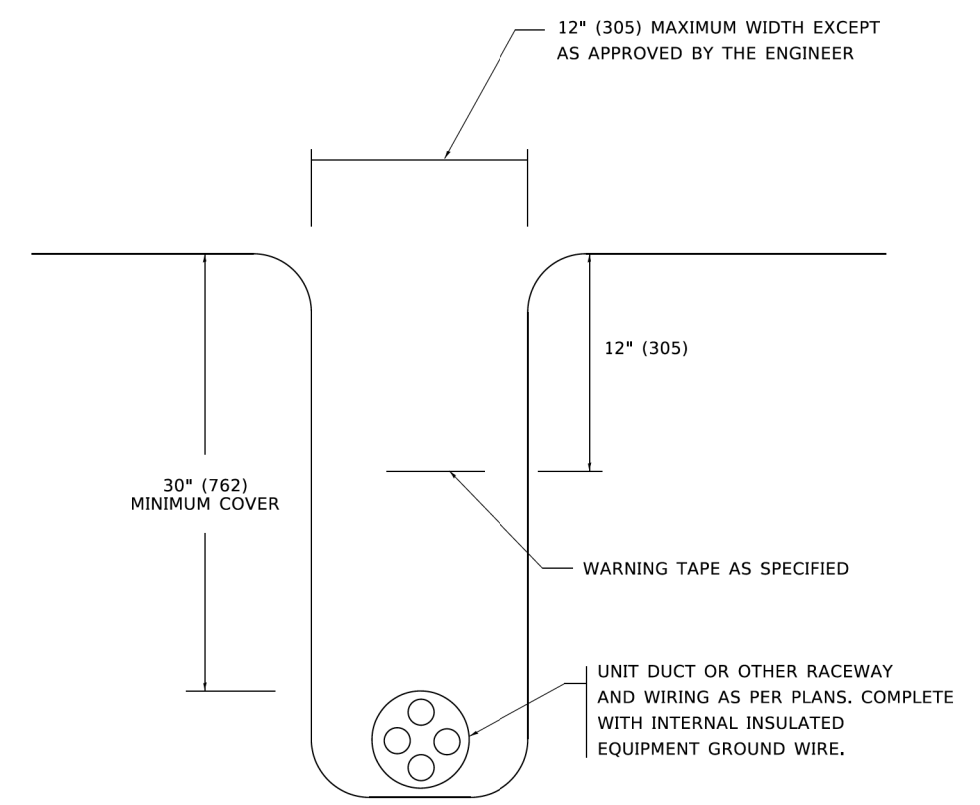
RTE.	SECTION	COUNTY	TOTAL SHEETS	SHEET NO.
		COOK	14	10

ILLINOIS FED. AID PROJECT

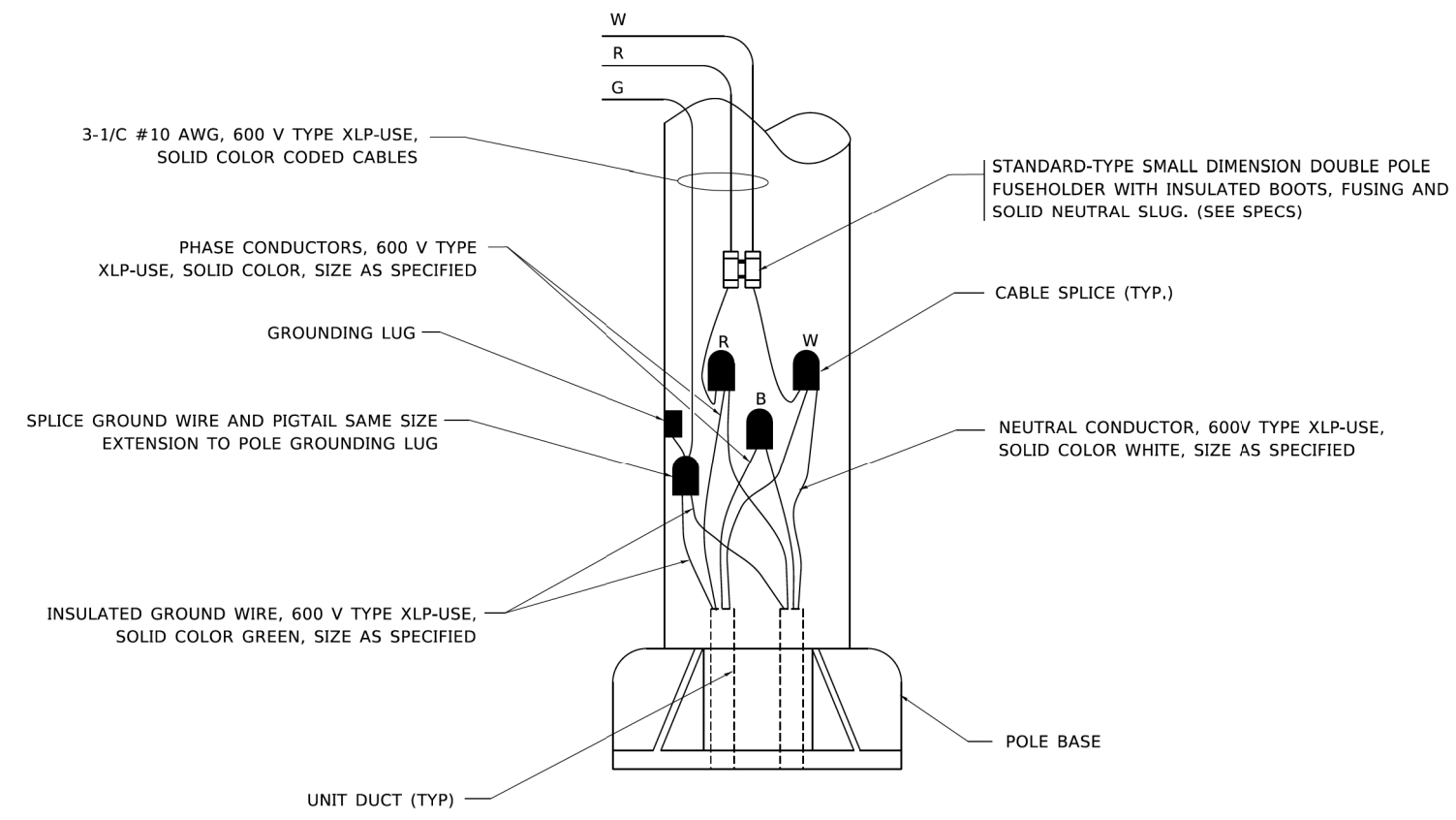


TYPICAL SPLICE DETAIL
N.T.S.

NOTE THAT NUMBER OF CABLES IN SPLICE MAY VARY



TYPICAL WIRING IN TRENCH DETAIL
N.T.S.



POLE WIRING DETAIL
N.T.S.

MODEL: Default
FILE NAME: p:\1\laminom\dot\illinois\gov\p\w\dot\Documents\DOT_Offices\Default_1\Projects\118152\22\31\CAD\DWG\CAD\sheet\shw702.dwg

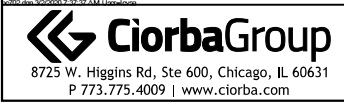
USER NAME = leysa	DESIGNED -	REVISED - 02/04/2020
	DRAWN -	REVISED -
PLOT SCALE = 50.0000" / in.	CHECKED -	REVISED -
PLOT DATE = 3/2/2020	DATE - 08/08/2003	REVISED -

STATE OF ILLINOIS
DEPARTMENT OF TRANSPORTATION

MISC. ELECTRICAL DETAILS
SHEET A

SCALE: NONE	SHEET 1 OF 1 SHEETS	STA. TO STA.	F.A. RTE.	SECTION	COUNTY	TOTAL SHEETS	SHEET NO.
			BE-702		CONTRACT NO.		
			ILLINOIS FED. AID PROJECT				

DATE PLOTTED = 7/31/2024 5:29:39 PM
PLOT TABLE = N:\P\118152\22\31\CAD\DWG\CAD\sheet\shw702.tbl
PLOT CONFIG = N:\S\118152\22\31\CAD\DWG\CAD\sheet\shw702.plt
FILE NAME = N:\P\118152\22\31\CAD\DWG\CAD\sheet\shw702.dwg



USER NAME = untitled	DESIGNED - AM	REVISED -
	DRAWN - DTJ	REVISED -
PLOT SCALE = 3.3333" / in.	CHECKED - JMV	REVISED -
PLOT DATE = 7/31/2024	DATE - 5/24/2024	REVISED -

BURNING BUSH LANE
STREET LIGHTING
VILLAGE OF MOUNT PROSPECT, ILLINOIS

SCALE: N.T.S.	SHEET NO. 9 OF 9 SHEETS	STA. TO STA.
---------------	-------------------------	--------------

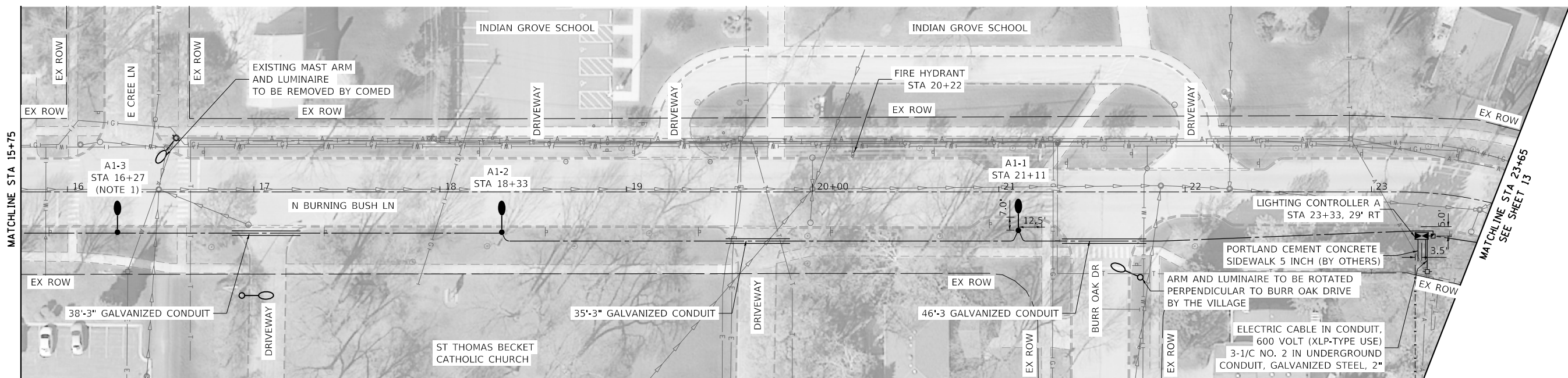
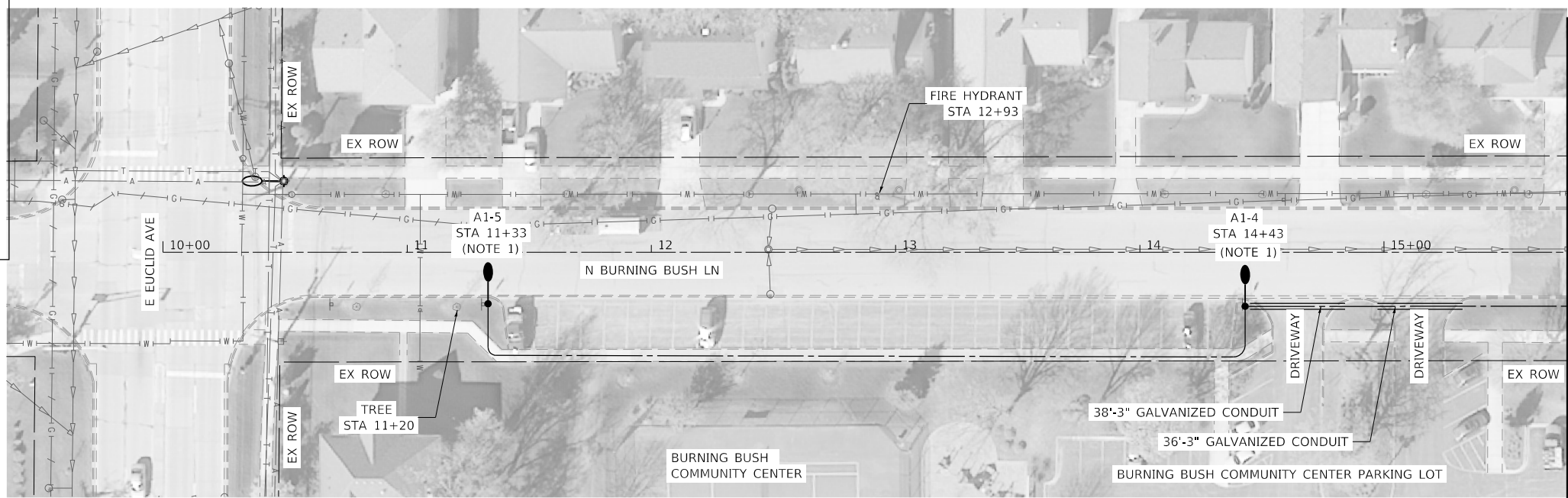
RTE.	SECTION	COUNTY	TOTAL SHEETS	SHEET NO.
		COOK	14	11
ILLINOIS FED. AID PROJECT				

LEGEND

- ○ EXISTING LIGHT POLE AND LUMINAIRE
 - ⊕ ○ EXISTING MAST ARM AND LUMINAIRE MOUNTED ON UTILITY POLE
 - ⊕ ○^R EXISTING MAST ARM AND LUMINAIRE TO BE REMOVED
 - EXISTING LIGHT STANDARD, 25 FT. M.H., 10 FT. CLAMP-ON MAST ARM, LED LUMINAIRE ON LIGHT POLE FOUNDATION, METAL
 - PROPOSED HANDHOLE
 - ⊠ PROPOSED LIGHTING CONTROLLER
 - - - PROPOSED UNIT DUCT WITH 2-1/C No. 6 & 1-1/C No. 8 GROUND, 600V (XLP-TYPE USE), 1" DIA. OR AS NOTED
 - ══ PROPOSED RIGID GALVANIZED STEEL CONDUIT
- CONTROLLER IDENTIFICATION (TYP.)
CIRCUIT NUMBER (TYP.)
A1-1 — POLE NUMBER (TYP.)

NOTES

1. VILLAGE TO RELOCATE EXISTING STREET SIGNS FROM SIGN POSTS TO PROPOSED LIGHT POLES.
2. OFFSET LIGHTING UNITS NEAR DRIVEWAYS TO MAINTAIN 6 FEET FROM EDGE OF DRIVEWAY TO EDGE OF FOUNDATION UNLESS NOTED OTHERWISE.
3. LIGHTING UNIT SETBACK SHALL BE 3 FEET FROM FACE OF CURB TO CENTER OF FOUNDATION UNLESS NOTED OTHERWISE.
4. LUMINAIRES AT MID-BLOCK LOCATIONS SHALL HAVE OUTPUT CODE 050 AND LUMINAIRES AT INTERSECTIONS SHALL HAVE OUTPUT CODE 070.
5. WATERMAIN LOCATION SHALL BE VERIFIED IN THE FIELD PRIOR TO CONSTRUCTION.



DATE PLOTTED = 7/31/2024 5:29:41 PM
 PEN TABLE = N:\Projects\18021845\01_0021845.tbl
 PLOT CONFIG = N:\Sandbox\CAD\Bentley\standards\11-001\plotting\ccl-plot-pgf.plt
 FILE NAME = N:\PROJECTS\18021845\01_0021845\01_lighting\18021845.dwg



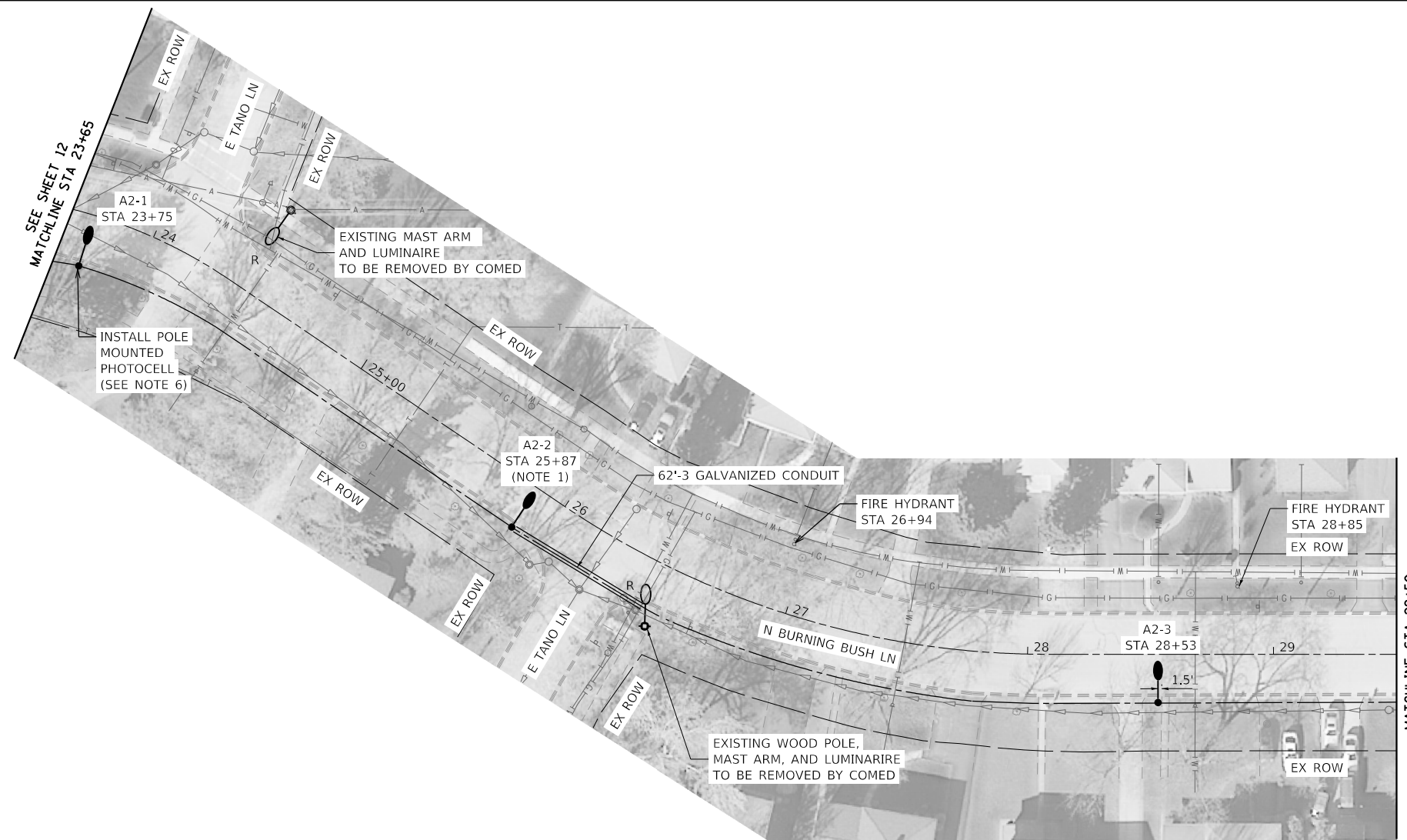
USER NAME = untitled	DESIGNED - AM	REVISED -
PLOT SCALE = 60.0000' / in.	DRAWN - DTJ	REVISED -
PLOT DATE = 7/31/2024	CHECKED - JMV	REVISED -
	DATE - 5/24/2024	REVISED -

**BURNING BUSH LANE
STREET LIGHTING
VILLAGE OF MOUNT PROSPECT, ILLINOIS**

PROPOSED LIGHTING PLAN		
SCALE: 1" = 30'	SHEET NO. 1 OF 2 SHEETS	STA. 10+26 TO STA. 23+65

RTE.	SECTION	COUNTY	TOTAL SHEETS	SHEET NO.
		COOK	14	12



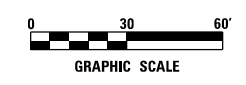
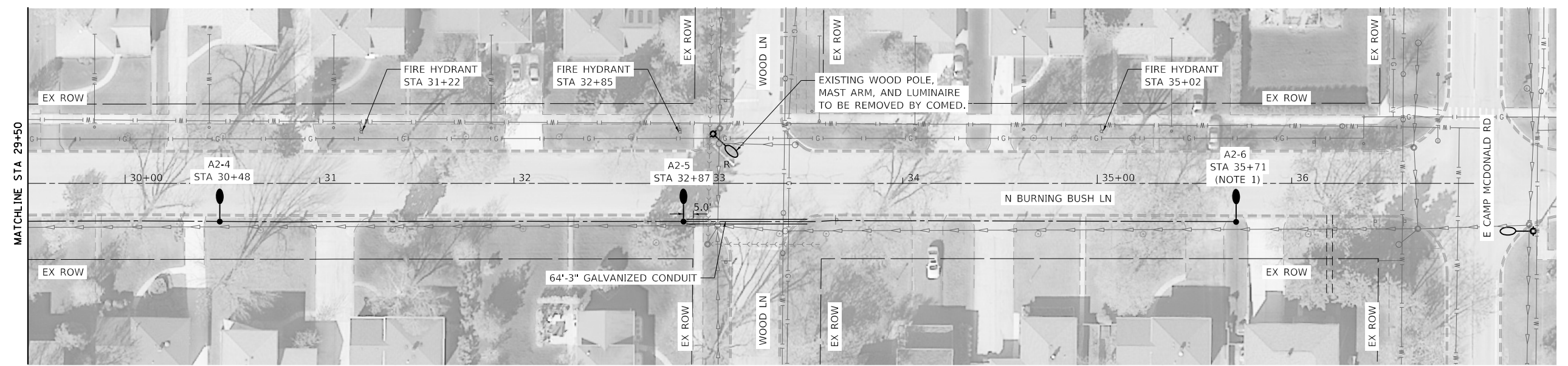


LEGEND

- EXISTING LIGHT POLE AND LUMINAIRE
- ⊕ EXISTING MAST ARM AND LUMINAIRE MOUNTED ON UTILITY POLE
- ⊕^R EXISTING MAST ARM AND LUMINAIRE TO BE REMOVED
- LIGHT STANDARD, 25 FT. M.H., 10 FT. CLAMP-ON MAST ARM, LED LUMINAIRE ON LIGHT POLE FOUNDATION, METAL
- ▣ PROPOSED HANDHOLE
- ▣ PROPOSED LIGHTING CONTROLLER
- - - PROPOSED UNIT DUCT WITH 2-1/C No. 6 & 1-1/C No. 8 GROUND, 600V (XLP-TYPE USE), 1" DIA. OR AS NOTED
- ══ PROPOSED RIGID GALVANIZED STEEL CONDUIT

CONTROLLER IDENTIFICATION (TYP.)
 CIRCUIT NUMBER (TYP.)
 A1-1 POLE NUMBER (TYP.)

- NOTES**
- VILLAGE TO RELOCATE EXISTING STREET SIGNS FROM SIGN POSTS TO PROPOSED LIGHT POLES.
 - OFFSET LIGHTING UNITS NEAR DRIVEWAYS TO MAINTAIN 6 FEET FROM EDGE OF DRIVEWAY TO EDGE OF FOUNDATION UNLESS NOTED OTHERWISE.
 - LIGHTING UNIT SETBACK SHALL BE 3 FEET FROM FACE OF CURB TO CENTER OF FOUNDATION UNLESS NOTED OTHERWISE.
 - LUMINAIRES AT MID-BLOCK LOCATIONS SHALL HAVE OUTPUT CODE 050 AND LUMINAIRES AT INTERSECTIONS SHALL HAVE OUTPUT CODE 070.
 - WATERMAIN LOCATION SHALL BE VERIFIED IN THE FIELD PRIOR TO CONSTRUCTION.
 - POLE MOUNTED PHOTOCELL, 3-1/C #10 CABLE AND 1" DUCT INCLUDED IN THE COST OF LIGHTING CONTROLLER



DATE PLOTTED = 7/31/2024 5:21:25 PM
 PEN TABLE = N:\Projects\18021845\01_00021845.tbl
 PLOT CONFIG = N:\Sas\orders\CAD\Bentley\standards\IL_001\plotting\ccl-pbf-plc.tcf
 FILE NAME = N:\PROJECTS\18021845\01\CADD\Sht 12 Lighting 18021845.sht-1-10282.dgn

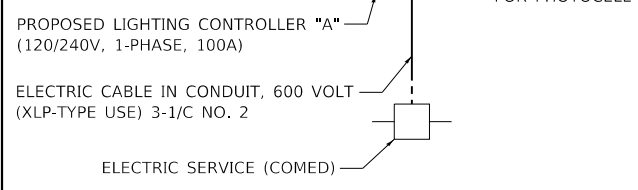
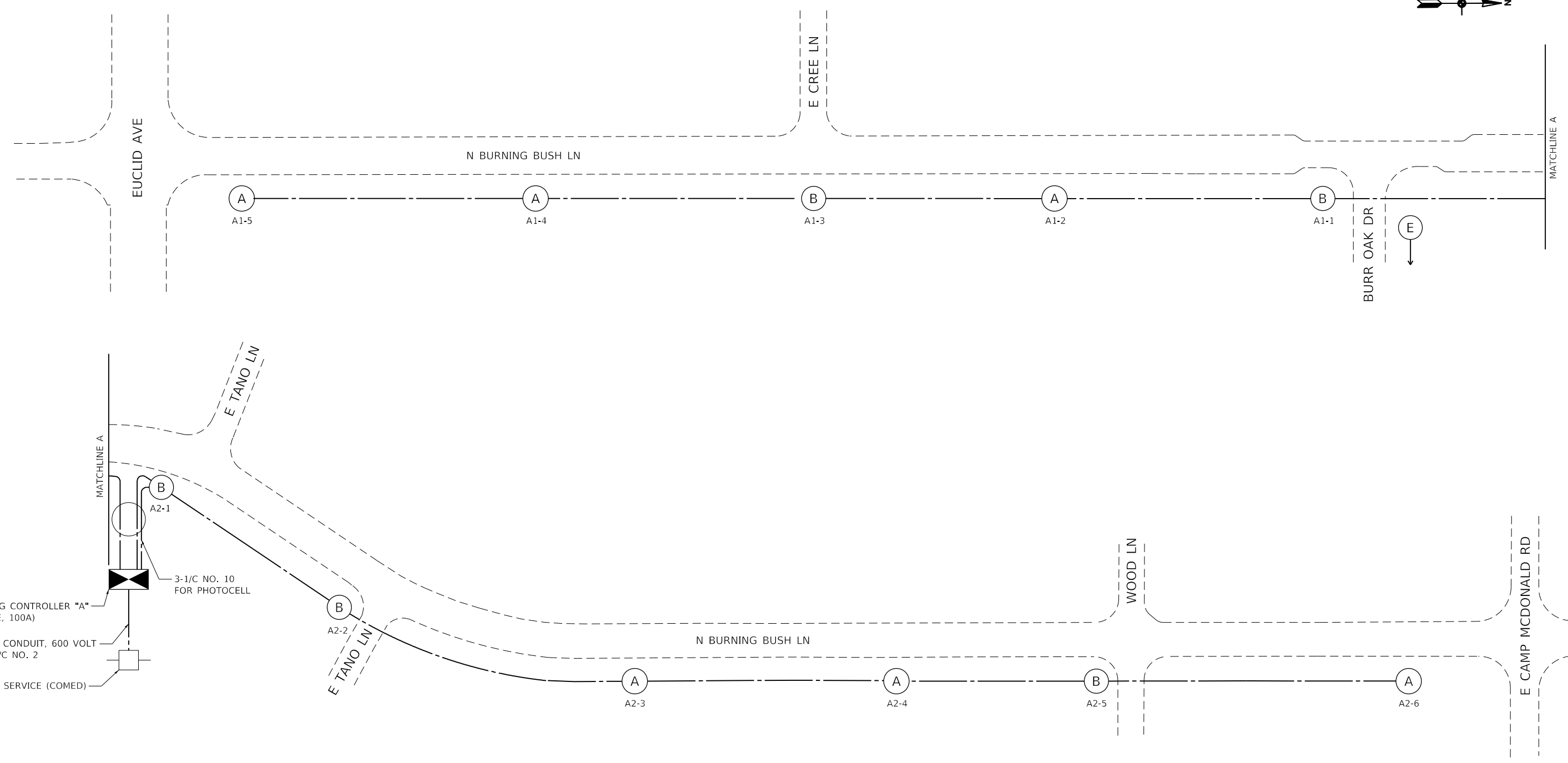
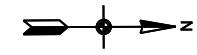


USER NAME = untitled	DESIGNED - AM	REVISED -
DRAWN - DTJ	REVISOR -	
PLOT SCALE = 60.0000' / in.	CHECKED - JMV	REVISOR -
PLOT DATE = 7/31/2024	DATE - 5/24/2024	REVISOR -

**BURNING BUSH LANE
 STREET LIGHTING
 VILLAGE OF MOUNT PROSPECT, ILLINOIS**

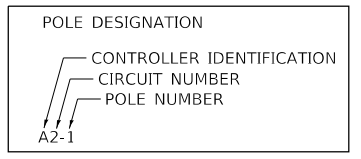
PROPOSED LIGHTING PLAN			
SCALE: 1" = 30'	SHEET NO. 2 OF 2 SHEETS	STA. 23+65 TO STA. 36+80	

RTE.	SECTION	COUNTY	TOTAL SHEETS	SHEET NO.
		COOK	14	13
ILLINOIS FED. AID PROJECT				



LEGEND

- (A) LIGHT STANDARD, ALUMINUM, 25' M.H., 10 FT. CLAMP-ON MAST ARM, WITH 43W LED LUMINAIRE
- (B) LIGHT STANDARD, ALUMINUM, 25' M.H., 10 FT. CLAMP-ON MAST ARM, WITH 66W LED LUMINAIRE
- (E) EXISTING LIGHT STANDARD TO REMAIN
- PROPOSED LIGHTING CONTROLLER, 120/240V, 1-PHASE, 100A
- PROPOSED HANDHOLE
- UNIT DUCT, 2-1/C #6, 1/C #8 GROUND, 600V (XLP-TYPE USE), 1" DIAMETER POLYETHYLENE



DATE PLOTTED = 7/31/2024 5:21:42 PM
 PEN TABLE = N:\Projects\10021845\01_00021845.tbl
 PLOT CONFIG = N:\Projects\10021845\01_00021845.ctb
 FILE NAME = N:\Projects\10021845\01_00021845.dwg



USER NAME = untitled	DESIGNED - AM	REVISED -
	DRAWN - DTJ	REVISED -
PLOT SCALE = 100.0000' / in.	CHECKED - JMV	REVISED -
PLOT DATE = 7/31/2024	DATE - 5/24/2024	REVISED -

**BURNING BUSH LANE
 STREET LIGHTING
 VILLAGE OF MOUNT PROSPECT, ILLINOIS**

SINGLE LINE DIAGRAM			
SCALE: N.T.S.	SHEET NO.	OF SHEETS	STA. TO STA.

RT.	SECTION	COUNTY	TOTAL SHEETS	SHEET NO.
		COOK	14	14
ILLINOIS FED. AID PROJECT				