

**PROPOSED PAVEMENT MARKING LEGEND**

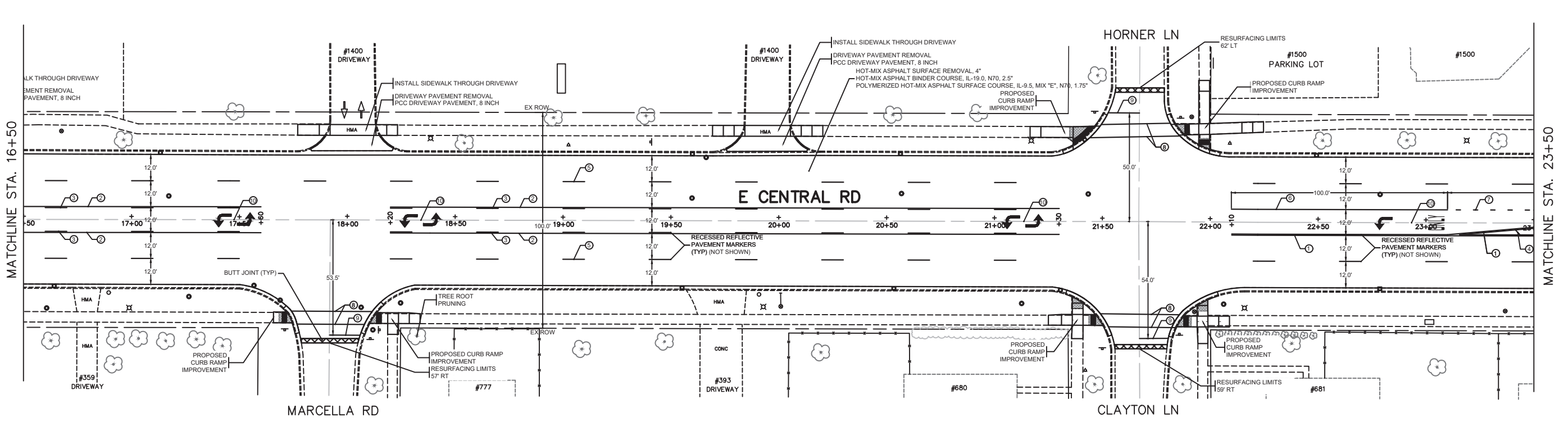
- ① THERMOPLASTIC PAVEMENT MARKING LINE 4", 2 @ 4", SOLID, YELLOW, 11" C-C - CENTERLINE (TYP.)
- ② THERMOPLASTIC PAVEMENT MARKING LINE 4", SOLID, YELLOW - LINE (TYP.)
- ③ THERMOPLASTIC PAVEMENT MARKING LINE 4", SKIP-DASH, YELLOW, 10' LINE - 30' SPACE - LINE (TYP.)
- ④ THERMOPLASTIC PAVEMENT MARKING LINE 12", SOLID YELLOW - PAINTED MEDIAN DIAGONALS (TYP.) (SEE DISTRICT DETAIL TC-13 FOR SPACING)
- ⑤ THERMOPLASTIC PAVEMENT MARKING LINE 4", SKIP-DASH, WHITE, 10' LINE - 30' SPACE - LANE LINES (TYP.)
- ⑥ THERMOPLASTIC PAVEMENT MARKING LINE 6", SOLID, WHITE - TURN LANE MARKINGS (TYP.)
- ⑦ THERMOPLASTIC PAVEMENT MARKING LINE 6", SKIP-DASH, WHITE, 2' LINE - 6' SPACE - DOTTED LINES (TYP.)
- ⑧ THERMOPLASTIC PAVEMENT MARKING LINE 6", 2 @ 6", SOLID, WHITE - CROSSWALK LINES (PEDESTRIAN) (TYP.)
- ⑨ THERMOPLASTIC PAVEMENT MARKING LINE 24", SOLID, WHITE, STOP LINES (TYP.)
- ⑩ THERMOPLASTIC PAVEMENT MARKING LETTERS & SYMBOLS, SOLID, WHITE - TURN LANE MARKINGS (TYP.)

**ROADWAY LEGEND**

- ⊗ HOT-MIX ASPHALT SURFACE REMOVAL - BUTT JOINT

**NOTES:**

1. LIMIT OF RESURFACING ON SIDE-STREETS THROUGHOUT THE PROJECT SHALL BE TO THE RADIUS RETURN UNLESS OTHERWISE SHOWN ON THE PLANS OR AS DIRECTED BY THE ENGINEER.
2. ALL FINAL PAVEMENT MARKINGS SHALL BE THERMOPLASTIC PAVEMENT MARKINGS (OF THE EXTRUDED TYPE).
3. ALL FINAL PAVEMENT MARKINGS SHALL BE PLACED IN ACCORDANCE WITH TC-13 "DISTRICT ONE TYPICAL PAVEMENT MARKINGS" STANDARD DETAIL.
4. ALL RECESSED REFLECTIVE PAVEMENT MARKERS SHALL BE PLACED IN ACCORDANCE WITH TC-11 "TYPICAL APPLICATIONS RAISED REFLECTIVE PAVEMENT MARKERS (SNOW-PLOW RESISTANT)" STANDARD DETAIL.
5. FOR PROPOSED CURB RAMP IMPROVEMENTS, SEE "ADA RAMP DETAILS".
6. PAVEMENT PATCHING LOCATIONS SHALL BE DETERMINED BY THE ENGINEER AFTER THE EXISTING ASPHALT SURFACE HAS BEEN REMOVED.
7. SPOT CURB AND GUTTER AND SIDEWALK REPAIR LOCATIONS SHALL BE DETERMINED IN THE FIELD BY THE ENGINEER AND ARE NOT SHOWN ON THESE PLANS.



USER NAME = LJF	DESIGNED - LJF	REVISED -
PLOT SCALE =	DRAW - LJF	REVISED -
PLOT DATE = 10/31/2023	CHECKED - MPL	REVISED -
	DATE - 10/31/2023	REVISED -

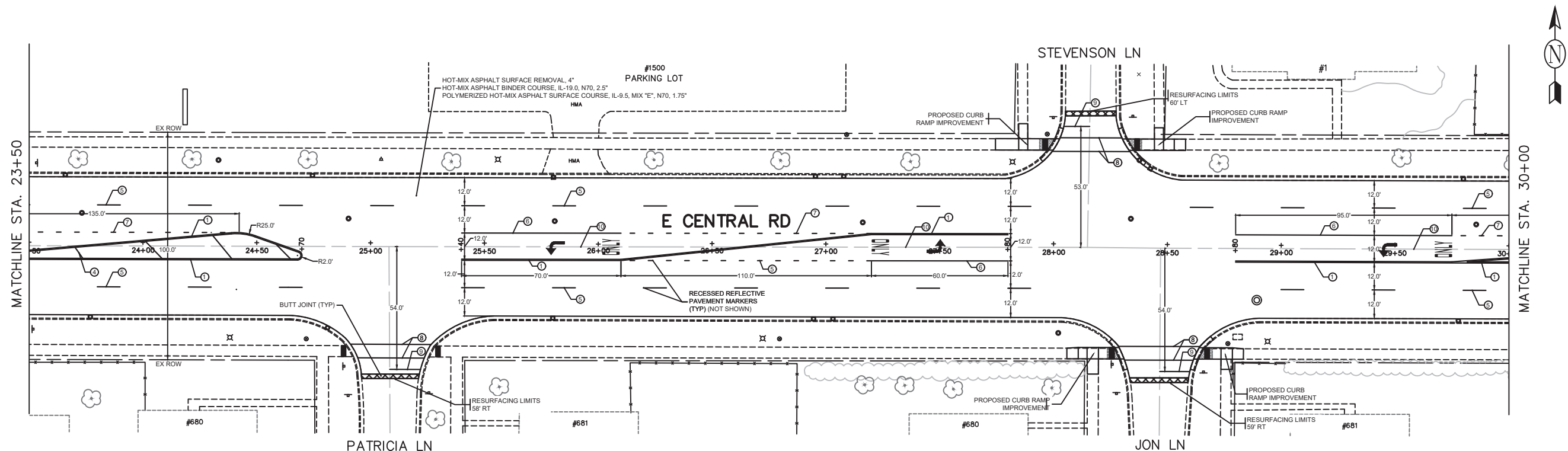
**STATE OF ILLINOIS  
DEPARTMENT OF TRANSPORTATION**

**CENTRAL ROAD - WESTGATE ROAD TO WOLF ROAD  
PLAN SHEETS STA 9+48 TO 23+50**

SCALE: SHEET 1 OF 2 SHEETS STA. TO STA.

F.A.U. RTE. 1300	SECTION 23-00178-00-RS	COUNTY COOK	TOTAL SHEETS 38	SHEET NO. 10
CONTRACT NO. 61K09				
ILLINOIS FED. AID PROJECT				

H:\Engineering\Agencies\WMC\STP Projects\Central Road Resurfacing\Westgate to Wolf\Phase I and II\CAD\Westgate-Wolf - Phase II.dwg



**PROPOSED PAVEMENT MARKING LEGEND**

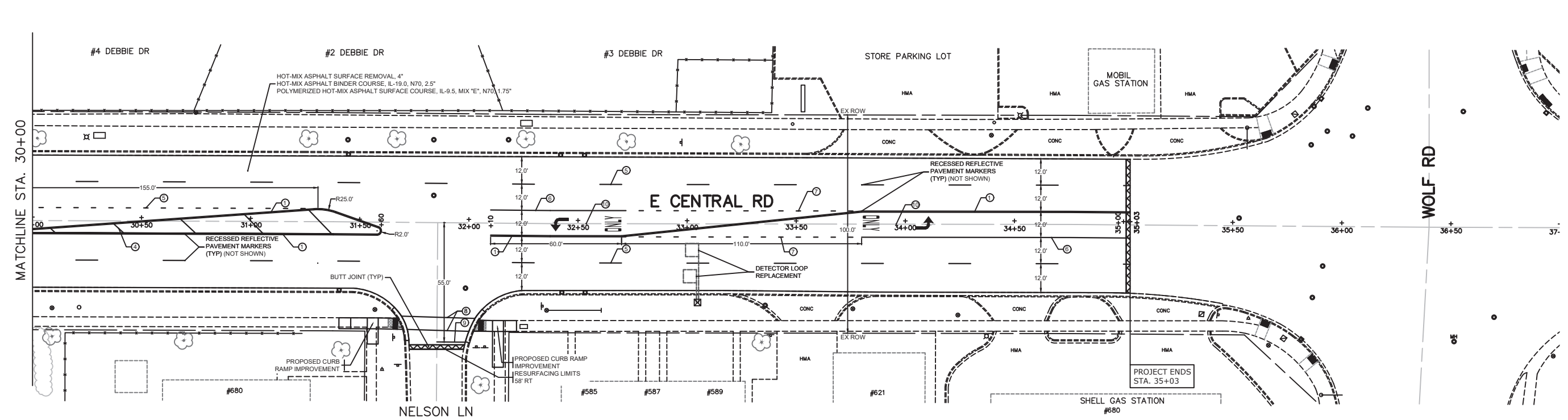
- |   |  |  |
|---|--|--|
| ① THERMOPLASTIC PAVEMENT MARKING LINE 4", 2 @ 4", SOLID, YELLOW, 11" C-C - CENTERLINE (TYP.)                                      | ⑤ THERMOPLASTIC PAVEMENT MARKING LINE 4", SKIP-DASH, WHITE, 10' LINE - 30' SPACE - LANE LINES (TYP.) | ⑨ THERMOPLASTIC PAVEMENT MARKING LINE 24", SOLID, WHITE, STOP LINES (TYP.)                   |
| ② THERMOPLASTIC PAVEMENT MARKING LINE 4", SOLID, YELLOW - LINE (TYP.)   | ⑥ THERMOPLASTIC PAVEMENT MARKING LINE 6", SOLID, WHITE - TURN LANE MARKINGS (TYP.)                   | ⑩ THERMOPLASTIC PAVEMENT MARKING LETTERS & SYMBOLS, SOLID, WHITE - TURN LANE MARKINGS (TYP.) |
| ③ THERMOPLASTIC PAVEMENT MARKING LINE 4", SKIP-DASH, YELLOW, 10' LINE - 30' SPACE - LINE (TYP.)                                   | ⑦ THERMOPLASTIC PAVEMENT MARKING LINE 6", SKIP-DASH, WHITE, 2' LINE - 6' SPACE - DOTTED LINES (TYP.) |  |
| ④ THERMOPLASTIC PAVEMENT MARKING LINE 12", SOLID YELLOW - PAINTED MEDIAN DIAGONALS (TYP.) (SEE DISTRICT DETAIL TC-13 FOR SPACING) | ⑧ THERMOPLASTIC PAVEMENT MARKING LINE 6", 2 @ 6", SOLID, WHITE - CROSSWALK LINES (PEDESTRIAN) (TYP.) |  |

**ROADWAY LEGEND**

- ☒ HOT-MIX ASPHALT SURFACE REMOVAL - BUTT JOINT

**NOTES:**

- LIMIT OF RESURFACING ON SIDE-STREETS THROUGHOUT THE PROJECT SHALL BE TO THE RADIUS RETURN UNLESS OTHERWISE SHOWN ON THE PLANS OR AS DIRECTED BY THE ENGINEER.
- ALL FINAL PAVEMENT MARKINGS SHALL BE THERMOPLASTIC PAVEMENT MARKINGS (OF THE EXTRUDED TYPE).
- ALL FINAL PAVEMENT MARKINGS SHALL BE PLACED IN ACCORDANCE WITH TC-13 "DISTRICT ONE TYPICAL PAVEMENT MARKINGS" STANDARD DETAIL.
- ALL RECESSED REFLECTIVE PAVEMENT MARKERS SHALL BE PLACED IN ACCORDANCE WITH TC-11 "TYPICAL APPLICATIONS RAISED REFLECTIVE PAVEMENT MARKERS (SNOW-PLOW RESISTANT)" STANDARD DETAIL.
- FOR PROPOSED CURB RAMP IMPROVEMENTS, SEE "ADA RAMP DETAILS".
- PAVEMENT PATCHING LOCATIONS SHALL BE DETERMINED BY THE ENGINEER AFTER THE EXISTING ASPHALT SURFACE HAS BEEN REMOVED.
- SPOT CURB AND GUTTER AND SIDEWALK REPAIR LOCATIONS SHALL BE DETERMINED IN THE FIELD BY THE ENGINEER AND ARE NOT SHOWN ON THESE PLANS.



USER NAME = LJF	DESIGNED - LJF	REVISED -
PLOT SCALE =	DRAWN - LJF	REVISED -
PLOT DATE = 10/31/2023	CHECKED - MPL	REVISED -
	DATE - 10/31/2023	REVISED -

**STATE OF ILLINOIS  
DEPARTMENT OF TRANSPORTATION**

**CENTRAL ROAD - WESTGATE ROAD TO WOLF ROAD  
PLAN SHEETS STA 23+50 TO 35+03**

SCALE: SHEET 2 OF 2 SHEETS STA. TO STA.

F.A.U. RTE. 1300	SECTION 23-00178-00-R5	COUNTY COOK	TOTAL SHEETS 38	SHEET NO. 11
CONTRACT NO. 61K09				
ILLINOIS FED. AID PROJECT				

H:\Engineering\Agencies\WMC\STP Projects\Central Road Resurfacing\Westgate to Wolf\Phase 1 and IICAD\Westgate-Wolf - Phase II.dwg