

SCHOENBECK ROAD LIGHTING

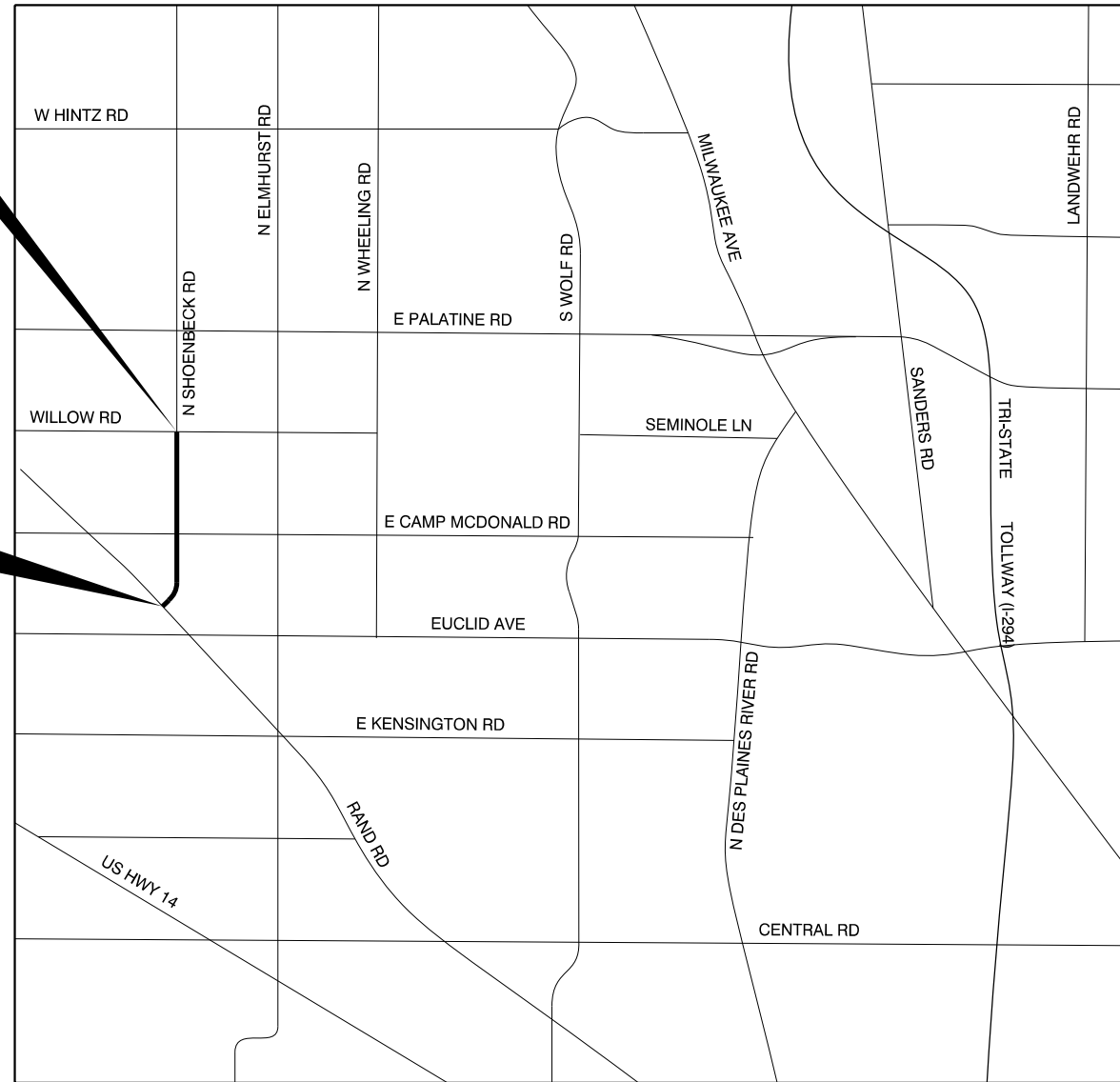
VILLAGE OF MOUNT PROSPECT, ILLINOIS

INDEX OF SHEETS

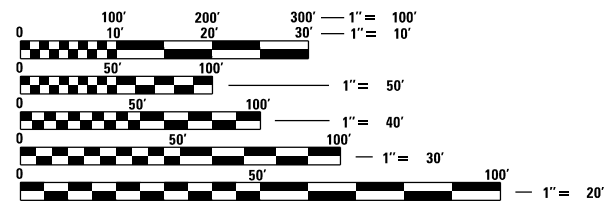
SHEET NO.	DESCRIPTION
1	COVER SHEET, INDEX OF SHEETS
2	GENERAL NOTES, LEGEND, SUMMARY OF QUANTITIES
3-11	DETAIL SHEET
12-15	PROPOSED LIGHTING PLAN
16	SINGLE LINE DIAGRAM

PROJECT ENDS
CAMP MCDONALD ROAD

PROJECT BEGINS
RAND ROAD



THE CONTRACTOR WILL NOT BE ALLOWED TO COMMENCE CONSTRUCTION UNTIL CERTIFICATES OF INSURANCE INDEMNIFYING AS ADDITIONAL INSURED PARTIES THE VILLAGE OF MOUNT PROSPECT AND THE CONSULTING ENGINEER, CIORBA GROUP, INC., 8725, SUITE 600, W. HIGGINS ROAD, CHICAGO, ILLINOIS 60631, HAVE BEEN DELIVERED TO AND APPROVED BY CIORBA GROUP, INC.



FULL SIZE PLANS HAVE BEEN PREPARED USING STANDARD ENGINEERING SCALES. REDUCED SIZED PLANS WILL NOT CONFORM TO STANDARD SCALES. IN MAKING MEASUREMENTS ON REDUCED PLANS, THE ABOVE SCALES MAY BE USED.

J.U.L.I.E.
JOINT UTILITY LOCATION INFORMATION FOR EXCAVATION
1-800-892-0123
OR 811

LOCATION MAP
(NOT TO SCALE)

GROSS LENGTH = 4,300 FEET (0.81 MILES)
NET LENGTH = 4,300 FEET (0.81 MILES)



DATE: 7/15/2023
SEAL EXPIRES: 11/30/2023

SIGNED: _____



CONSULTING ENGINEERS
DESIGN FIRM REGISTRATION NUMBER: 184-001016
8725 W. Higgins Road, Suite 600 | Chicago, IL 60631
P 773.775.4009 | www.ciorba.com

GENERAL NOTES

ACCESS

THE CONTRACTOR WILL BE REQUIRED TO MAINTAIN INGRESS AND EGRESS FOR EMERGENCY VEHICLES AT ALL TIMES DURING THE CONSTRUCTION PERIOD. DURING CONSTRUCTION, GARBAGE TRUCKS MUST BE PERMITTED ACCESS TO THE WORK ZONE IN ORDER TO PICK UP COMMERCIAL GARBAGE FOR THOSE PROPERTIES IMPACTED BY CONSTRUCTION. IF GARBAGE TRUCKS ACCESS IS NOT PROVIDED, THE CONTRACTOR WILL BE REQUIRED TO MOVE TRASH CONTAINERS TO AN ACCESSIBLE LOCATION.

UNDERGROUND UTILITIES

THE LOCATIONS OF THE UNDERGROUND UTILITIES AS SHOWN ON THE PLANS HAVE BEEN OBTAINED BY FIELD SURVEYS AND SEARCHES OF AVAILABLE RECORDS. IT IS BELIEVED THAT THE DATA IS ESSENTIALLY CORRECT, BUT THE VILLAGE OF MOUNT PROSPECT, AND/OR OTHER OFFICES AND AGENCIES ASSOCIATED WITH THE DEVELOPMENT OF THESE PLANS DO NOT GUARANTEE THEIR ACCURACY OR COMPLETENESS. THE CONTRACTOR WILL BE REQUIRED TO VERIFY THE LOCATION OF EACH FACILITY WITH THE UTILITY COMPANY, AND SHALL TAKE DUE CARE IN ALL PHASES OF THE CONSTRUCTION TO PROTECT ANY SUCH FACILITIES WHICH MAY BE AFFECTED BY THE WORK. ANY DAMAGE TO THE EXISTING UTILITIES SHALL BE REPAIRED IN ACCORDANCE WITH ARTICLE LR 105.

ADJUSTMENTS REQUIRED BY UTILITY COMPANIES WILL BE PERFORMED BY THE COMPANY INVOLVED OR ITS CONTRACTOR, BUT WILL BE COORDINATED BY THE GENERAL CONTRACTOR.

COORDINATION OF ALL UTILITY WORK INVOLVED IN THE CONSTRUCTION AREA WILL BE DISCUSSED AT A PRE-CONSTRUCTION CONFERENCE.

THE CONTRACTOR SHALL USE EXTREME CAUTION IN THE REMOVAL OF ABANDONED EXISTING GAS LINES SINCE RESIDUAL MATERIALS CONTAINED THEREIN ARE HIGHLY EXPLOSIVE, FLAMMABLE, AND TOXIC. ONCE THE MAINS ARE ABANDONED BY THE OWNER, THE CONTRACTOR SHALL ASSUME ALL RESPONSIBILITY FOR ANY DAMAGE AND/OR INJURY OCCURRING ON THE PROJECT DUE TO HIS OPERATIONS NEXT TO THE MAINS AND/OR THE METHOD OF REMOVAL OF THE ABANDONED MAINS.

OPEN EXCAVATION

THE CONTRACTOR WILL NOT BE ALLOWED TO LEAVE EXCAVATIONS OPEN OVERNIGHT. THE CONTRACTOR WILL BE RESPONSIBLE FOR COMPLETELY BACKFILLING OR PLATING OVER ALL EXCAVATIONS AT THE END OF EACH DAY. IF THE EXCAVATIONS ARE BACKFILLED THEY SHALL BE FILLED WITH AN AGGREGATE MEETING THE GRADATION OF CA-6. THE MATERIAL WILL BE COMPACTED SUFFICIENTLY TO PREVENT RUTTING OR SETTLEMENT OF MATERIALS UNDER TRAFFIC LOADS. IF PLATES ARE USED THEY SHALL BE OF SUFFICIENT THICKNESS TO SUPPORT VEHICULAR LOADS. ADDITIONALLY THEY SHALL EXTEND A MINIMUM OF NINE INCHES (9") BEYOND THE LIMITS OF THE EXCAVATION ON ALL SIDES. IF THE PLATES ARE TO BE LEFT OVER THE WEEKEND, THE EDGES OF THE PLATES SHALL BE CUSHIONED WITH A BITUMINOUS MIXTURE IN AREAS WHERE VEHICULAR TRAFFIC WILL CROSS THE PLATES.

THE COST FOR PROVIDING THE AGGREGATE, PLATES AND BITUMINOUS MIXTURE WILL NOT BE PAID FOR DIRECTLY BUT SHALL BE INCLUDED IN THE VARIOUS CONTRACT ITEMS.

TREE PROTECTION

THE CONTRACTOR SHALL BE RESPONSIBLE FOR BEING FAMILIAR WITH AND COMPLYING WITH ALL ASPECTS OF THE VILLAGE OF MOUNT PROSPECT TREE PROTECTION ORDINANCES AND ARBORICULTURAL STANDARDS MANUAL.

STREET SIGNS

IF ANY STREET SIGNS ARE DAMAGED DURING CONSTRUCTION THEY SHALL BE REPLACED AT THE CONTRACTOR'S EXPENSE.

MAINTENANCE OF EXISTING DRAINAGE STRUCTURES

LOOSE MATERIAL THAT IS DEPOSITED IN THE FLOW LINE OF GUTTERS OR DRAINAGE STRUCTURES THAT INHIBITS THE NATURAL FLOW OF WATER SHALL BE REMOVED AT THE CLOSE OF EACH WORKING DAY. AT THE CONCLUSION OF THE CONSTRUCTION OPERATIONS, ALL DRAINAGE FACILITIES SHALL BE CLEAN AND FREE OF ALL OBSTRUCTIONS. THE COST OF THIS WORK SHALL BE INCLUDED IN THE VARIOUS CONTRACT ITEMS.

SAW CUTTING

THE CONTRACTOR SHALL SAW CUT ASPHALT PAVEMENT AND CONCRETE PAVEMENT AS INDICATED ON THE PLANS OR AS DIRECTED BY THE ENGINEER, TO SEPARATE THE EXISTING PAVEMENT TO BE REMOVED BY MEANS OF AN APPROVED CONCRETE SAW TO A DEPTH AS DIRECTED BY THE ENGINEER. SUITABLE GUIDELINES OR DEVICES SHALL BE USED TO ASSURE CUTTING A NEAT, STRAIGHT LINE AS SHOWN ON THE PLANS. CARE SHALL BE TAKEN BY THE CONTRACTOR SO AS NOT TO DAMAGE THE REMAINING PAVEMENT DIRECTLY ADJACENT TO THE PAVEMENT TO BE REMOVED. ANY DAMAGE TO THE EXISTING PAVEMENT RESULTING FROM PAVEMENT REMOVAL OPERATIONS SHALL BE REPAIRED AT THE CONTRACTOR'S EXPENSE. THE PRICE OF SAW CUTTING, AS NOTED ABOVE, SHALL BE INCLUDED IN THE PARTICULAR PAY ITEMS.

TRAFFIC PROTECTION

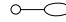
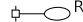



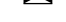

WHEN WORK COMMENCES, THE CONTRACTOR SHALL ASSUME THE MAINTENANCE OF ALL PAVEMENT, SHOULDERS, DRAINAGE FACILITIES, TRAFFIC CONTROL SIGNS, PAVEMENT MARKING, AND OTHER APPURTENANCES ON ROADWAYS WITHIN THE LIMITS OF THE CONTRACT WHICH ARE TO BE USED BY THE PUBLIC DURING CONSTRUCTION AND TO RETAIN THIS MAINTENANCE RESPONSIBILITY UNTIL PROJECT COMPLETION. NEED FOR SNOW AND ICE CONTROL DURING THE CONSTRUCTION PERIOD SHALL BE ACCOMMODATED FOR BY OTHERS. ALL UNBALLASTED TYPE I & II BARRICADES SHALL HAVE TWO SANDBAGS ONE ACROSS EACH BOTTOM RAIL.




SUMMARY OF QUANTITIES

PAY ITEM NO.	DESCRIPTION	UNIT	QUANTITY
1	UNDERGROUND CONDUIT, GALVANIZED STEEL, 2"	FOOT	25
2	UNDERGROUND CONDUIT, GALVANIZED STEEL, 3"	FOOT	102
3	UNDERGROUND CONDUIT, GALVANIZED STEEL, 4"	FOOT	46
4	UNIT DUCT, 600V, 2-1/C NO. 6, 1/C NO. 8 GROUND, (XLP-TYPE USE), 1" DIA. POLYETHYLENE	FOOT	2125
5	ELECTRIC CABLE IN CONDUIT, 600V (XLP-TYPE USE), 1/C NO. 2	FOOT	195
* 6	LIGHT STANDARD, ALUMINUM, 30' M.H., 10 FT. CLAMP-ON MAST ARM, LED LUMINAIRE	EACH	1
7	LIGHT STANDARD, ALUMINUM, 30' M.H., 12 FT. CLAMP-ON MAST ARM, LED LUMINAIRE	EACH	7
8	LIGHT STANDARD, ALUMINUM, 30' M.H., 15 FT. CLAMP-ON MAST ARM, LED LUMINAIRE	EACH	1
9	ELECTRIC UTILITY SERVICE CONNECTION (COMED)	EACH	1
10	ELECTRIC SERVICE INSTALLATION	EACH	1
11	LIGHTING CONTROLLER	EACH	1
12	BREAKAWAY DEVICE WITH ALUMINUM SKIRT	EACH	9
13	LIGHT POLE FOUNDATION, METAL, 11" BOLT CIRCLE, 8 5/8" X 6'	EACH	8
14	TREE PROTECTION FENCE	FOOT	1000
15	COMBINATION CONCRETE CURB AND GUTTER REMOVAL AND REPLACEMENT	FOOT	8
16	TRAFFIC CONTROL AND PROTECTION	LS	1
17	ELECTRICAL HANDHOLE	EACH	1
18	CLASS D PATCHES, SPECIAL	SQ YD	18
19	REMOVE AND RE-ERECT EXISTING LIGHTING UNIT	EACH	1
20	REMOVAL OF EXISTING SERVICE INSTALLATION	EACH	1
21	REMOVAL OF LIGHTING UNIT, SALVAGE	EACH	1
22	REMOVE EXISTING CONCRETE FOUNDATION	EACH	2

* = NOMINAL QUANTITY PROVIDED FOR ADJUSTMENTS DURING CONSTRUCTION

LEGEND

-  EXISTING LIGHT POLE AND LUMINAIRE
-  EXISTING MAST ARM AND LUMINAIRE TO BE REMOVED
-  LIGHT STANDARD, 30 FT. M.H., 12 FT. CLAMP-ON MAST ARM, 120W LED LUMINAIRE
-  PROPOSED HANDHOLE
-  PROPOSED LIGHTING CONTROLLER
-  PROPOSED UNIT DUCT WITH 2-1/C No. 6 & 1-1/C No. 8 GROUND, 600V (XLP-TYPE USE), 1" DIA. OR AS NOTED
-  PROPOSED RIGID GALVANIZED STEEL CONDUIT

-  CONTROLLER IDENTIFICATION (TYP.)
-  CIRCUIT NUMBER (TYP.)
-  POLE NUMBER (TYP.)

DATE PLOTTED = 7/15/2023 12:29:05 PM
 PEN TABLE =
 PLOT CONFIG =
 FILE NAME =

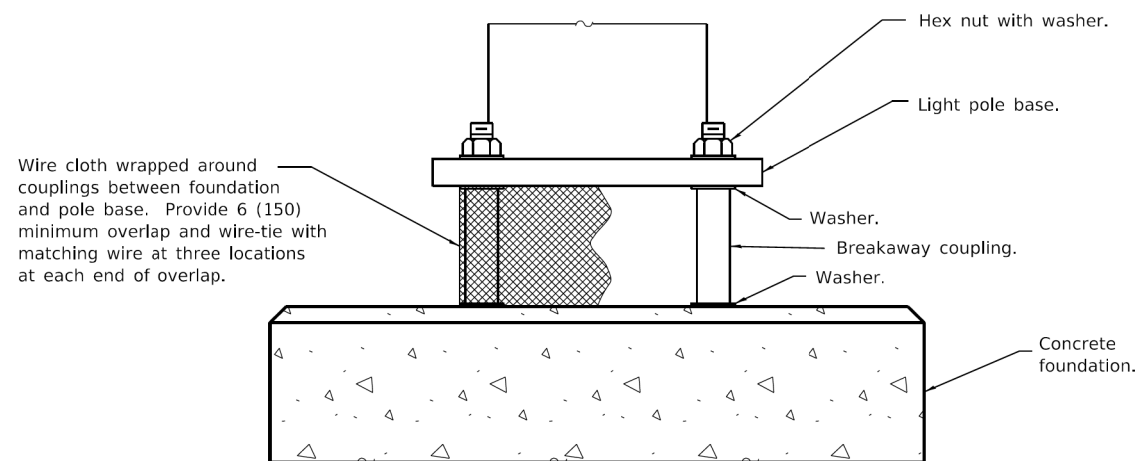


USER NAME = untitled	DESIGNED - DTJ	REVISED -
	DRAWN - DTJ	REVISED -
PLOT SCALE = 60.0000' / in.	CHECKED - JMV	REVISED -
PLOT DATE = 7/15/2023	DATE - 7/14/2023	REVISED -

**SCHOENBECK ROAD
STREET LIGHTING
VILLAGE OF MOUNT PROSPECT, ILLINOIS**

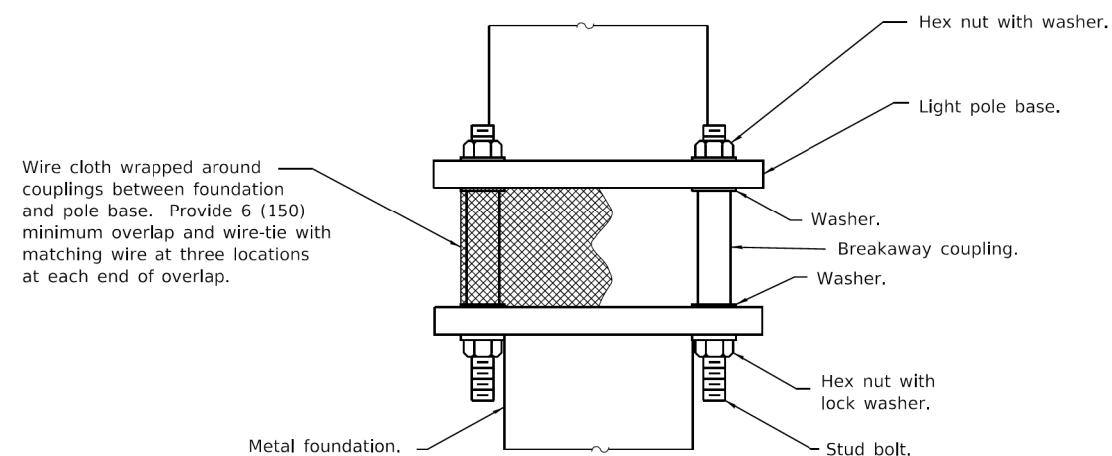
GENERAL NOTES, LEGEND AND SOQ			
SCALE: N.T.S.	SHEET NO.	OF SHEETS	STA. TO STA.

RTE.	SECTION	COUNTY	TOTAL SHEETS	SHEET NO.
		COOK	16	2
ILLINOIS FED. AID PROJECT				



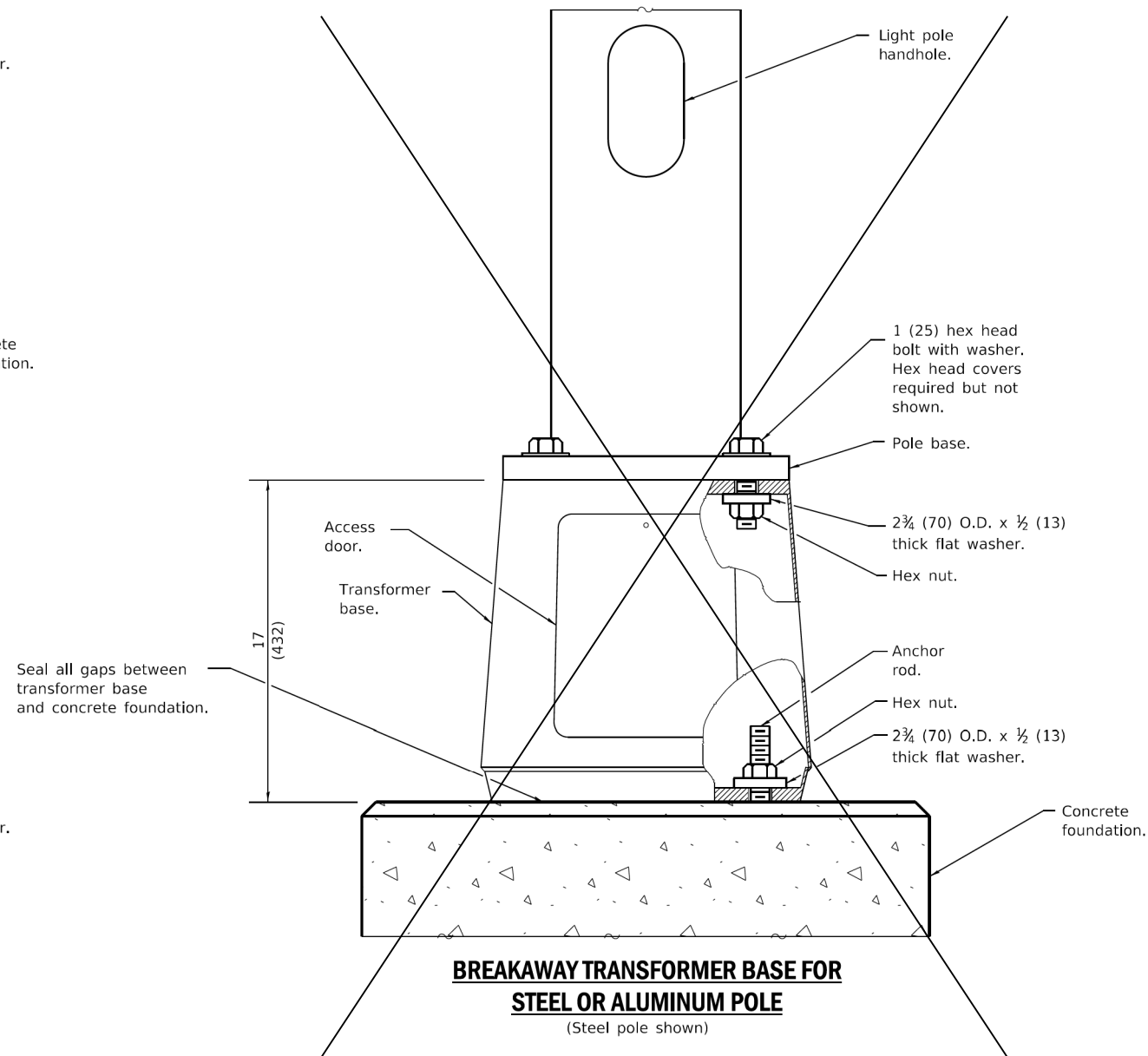
BREAKAWAY COUPLINGS ON CONCRETE FOUNDATION FOR STEEL LIGHT POLE

(Provide pole base skirt around wire cloth when required.)



BREAKAWAY COUPLINGS ON METAL FOUNDATION FOR STEEL POLE

(Provide pole base skirt around wire cloth when required.)



BREAKAWAY TRANSFORMER BASE FOR STEEL OR ALUMINUM POLE

(Steel pole shown)

Illinois Department of Transportation

PASSED January 1, 2018
[Signature]
 ENGINEER OF PRELIMINARY ENGINEERING

ISSUED 1-1-12

APPROVED January 1, 2018
[Signature]
 ENGINEER OF DESIGN AND ENVIRONMENT

DATE	REVISIONS
1-1-18	Revised to show rodent shield installation for aluminum poles.
1-1-14	New Standard.

See Sheet 2 for GENERAL NOTES.

BREAKAWAY DEVICES

(Sheet 1 of 2)

STANDARD 838001-01

DATE PLOTTED = 7/15/2023 12:29:07 PM
 PLOT TABLE = N:\Projects\2023\12-29-23\Lighting\838001-01.dgn
 PLOT CONFIG = N:\Projects\2023\12-29-23\Lighting\838001-01.dgn
 FILE NAME = N:\Projects\2023\12-29-23\Lighting\838001-01.dgn

CiorbaGroup
 8725 W. Higgins Rd, Ste 600, Chicago, IL 60631
 P 773.775.4009 | www.ciorba.com

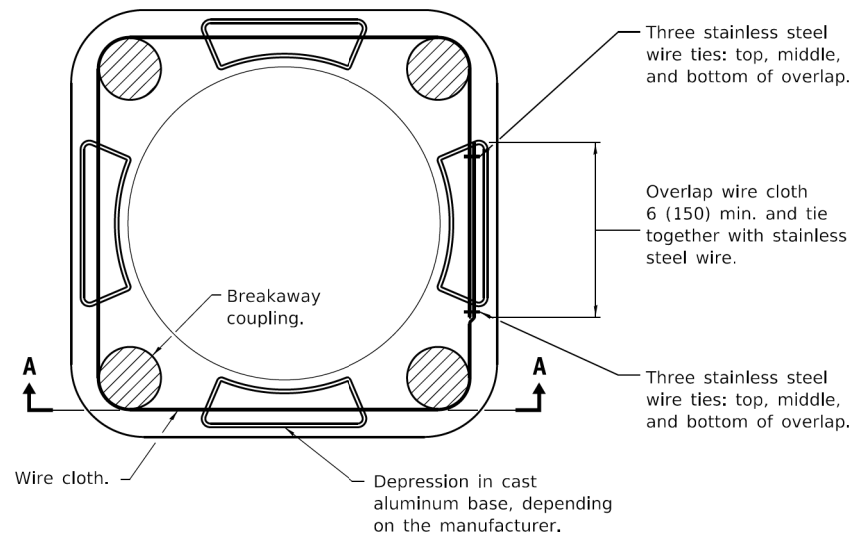
USER NAME = untitled	DESIGNED - DTJ	REVISED -
PLOT SCALE = 3.3333 / 1 in.	DRAWN - DTJ	REVISED -
PLOT DATE = 7/15/2023	CHECKED - JMV	REVISED -
	DATE - 7/14/2023	REVISED -

SCHOENBECK ROAD STREET LIGHTING VILLAGE OF MOUNT PROSPECT, ILLINOIS

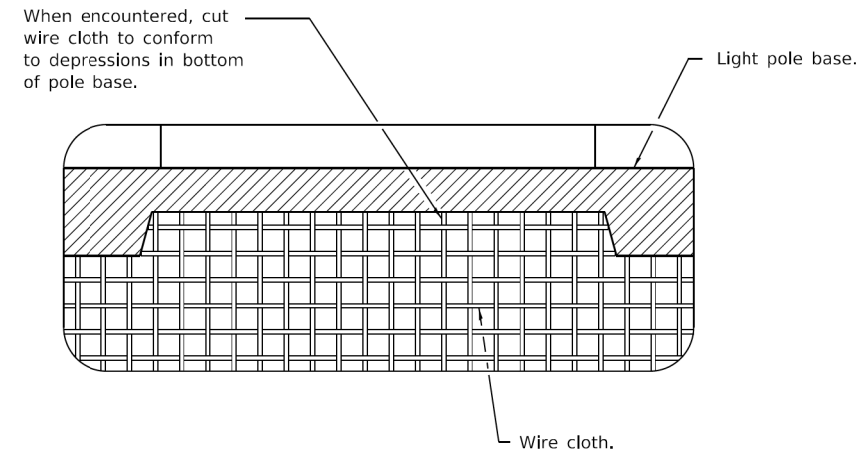
SCALE: N.T.S.	SHEET NO. 1 OF 9 SHEETS	STA.	TO STA.
---------------	-------------------------	------	---------

RTE.	SECTION	COUNTY	TOTAL SHEETS	SHEET NO.
		COOK	16	3

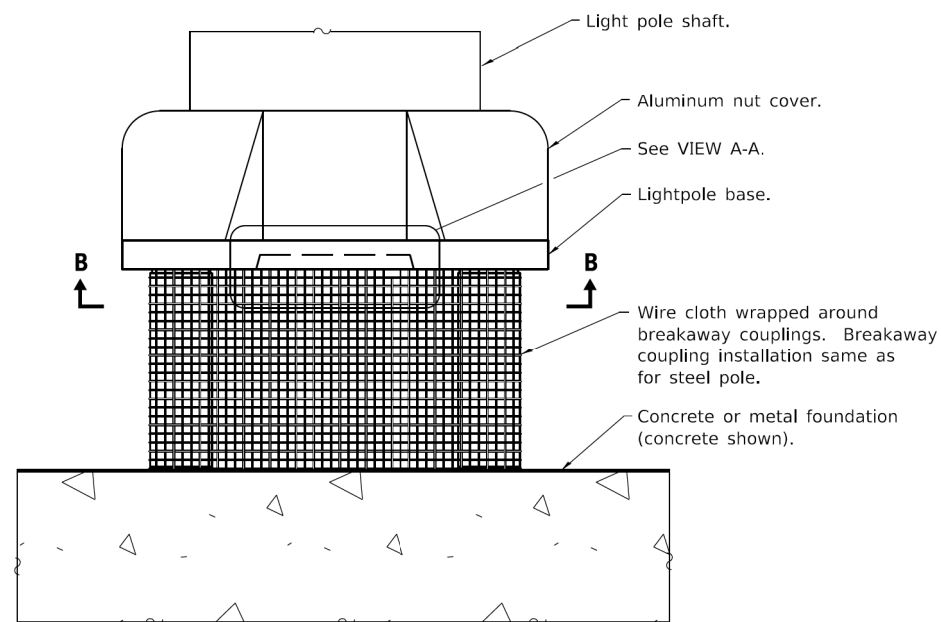
ILLINOIS FED. AID PROJECT



VIEW B-B



VIEW A-A



BREAKAWAY COUPLINGS FOR ALUMINUM POLES

(Provide pole base skirt around wire cloth when required.)

GENERAL NOTES

- See light pole standard for details not shown.
- Use largest transformer base bolt circle possible.
- Transformer bases shall not be installed on metal foundations.
- Washers on top of pole base shall cover the entire bolt slot.
- See Standard 836001 for Light Pole Foundation.
- Wire cloth shall be stainless steel, have a maximum opening of 3/4 (6), and have a minimum wire size of AWG No. 16 (1.6).
- All dimensions are in inches (millimeters) unless otherwise shown.

BREAKAWAY DEVICES

(Sheet 2 of 2)

STANDARD 838001-01

Illinois Department of Transportation

PASSED January 1, 2018
[Signature]
 ENGINEER OF PRELIMINARY ENGINEERING

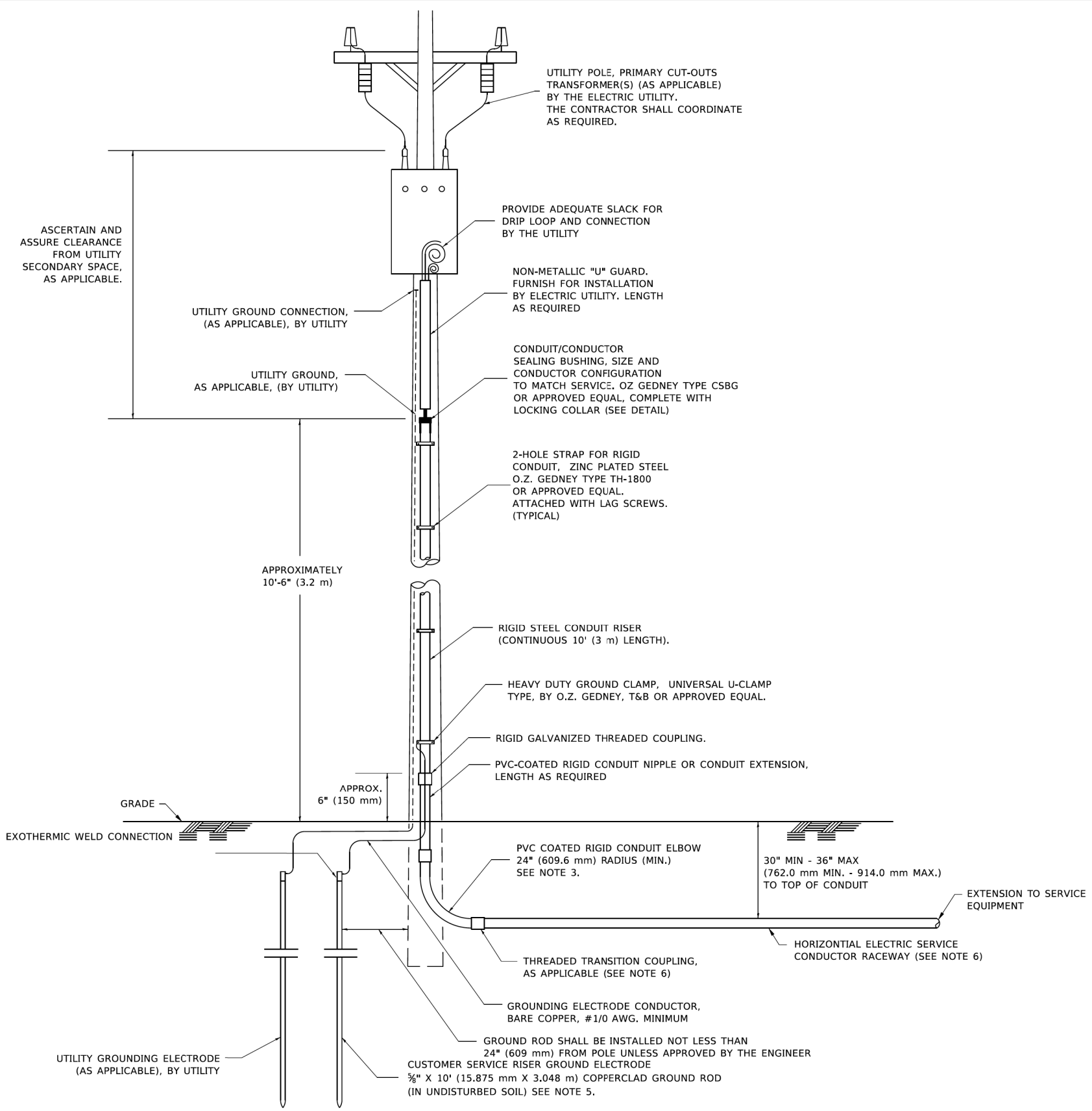
APPROVED January 1, 2018
[Signature]
 ENGINEER OF DESIGN AND ENVIRONMENT

ISSUED 1-1-12

DATE PLOTTED = 7/15/2023 12:29:14 PM
 PLOT TABLE = ...
 PLOT CONFIG = ...
 FILE NAME = ...

USER NAME = untitled	DESIGNED - DTJ	REVISED -
PLOT SCALE = 3.3333 1/in.	DRAWN - DTJ	REVISED -
PLOT DATE = 7/15/2023	CHECKED - JMV	REVISED -
	DATE - 7/14/2023	REVISED -

SCALE: N.T.S.	SHEET NO. 2 OF 9 SHEETS	STA.	TO STA.	
RTE.	SECTION	COUNTY	TOTAL SHEETS	SHEET NO.
		COOK	16	4
ILLINOIS FED. AID PROJECT				

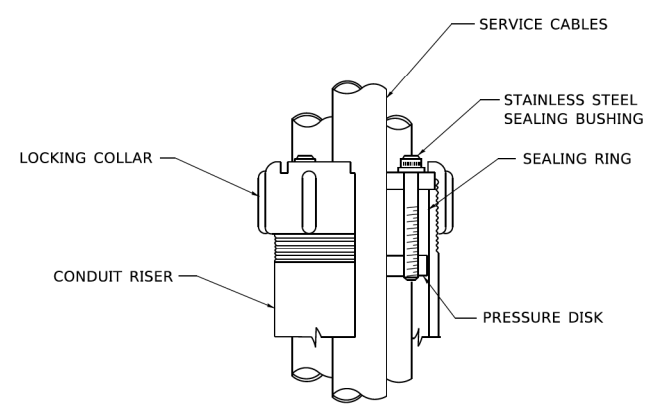


APPLICATION

THIS DETAIL APPLIES FOR LOW VOLTAGE ELECTRIC SERVICE (600 V OR LESS) FROM AN OVERHEAD UTILITY SUPPLY TO SEPERATLY-MOUNTED SERVICE EQUIPMENT.

NOTES

- SERVICE VOLTAGE SHALL BE AS INDICATED ELSEWHERE IN THE DRAWINGS.
- UNLESS OTHERWISE INDICATED, ITEMS AND WORK SHALL BE INCLUDED AND PAID AS PART OF THE ELECTRIC UTILITY SERVICE INSTALLATION PAY ITEM.
- CONDUIT AND CONNECTOR DIAMETER SHALL MATCH THE DIAMETER OF THE SERVICE CONDUCTOR RACEWAY AS INDICATED ON THE PLANS.
- PVC COATED RACEWAYS AND ACCESSORIES SHALL BE CAREFULLY INSTALLED WITH MFR RECOMMENDED TOOLS AND PROCEDURES TO AVOID DAMAGE. ANY DAMAGE SHALL BE REPAIRED WITH COMPATIBLE PVC TOUCH-UP MATERIAL TO THE SATISFACTION OF THE ENGINEER OR THE DAMAGED MATERIAL SHALL BE REPLACED AT NO ADDITIONAL COST.
- THE CONTRACTOR SHALL OBTAIN INSPECTION AND APPROVAL BY THE ENGINEER OF SERVICE RISER GROUND ELECTRODE, RISER ELBOW, NIPPLE AND CONNECTION TO SERVICE CONDUCTOR RACEWAY EXTENSION BEFORE BACKFILL AND SHALL ALSO OBTAIN INSPECTION OF SERVICE RISER AND SEALING BUSHING BEFORE UTILITY "U" GUARD INSTALLATION AND SERVICE CONNECTION.
- THE HORIZONTAL ELECTRIC SERVICE CONDUCTOR RACEWAY SHALL BE AS INDICATED AND SHALL BE MEASURED SEPARATELY FOR PAYMENT. WHEN THE RACEWAY IS PVC-COATED RIGID GALVANIZED STEEL, THE COUPLING SHALL BE THE SAME. WHEN THE RACEWAY IS PVC CONDUIT (IN CONCRETE), THE COUPLING SHALL BE A METALIC TO NON METALIC ADAPTER. WHEN THE RACEWAY IS ENCASED IN CONCRETE, THE CONCRETE SHALL EXTEND TO COVER THE COUPLING.
- PLANS AND DETAILS INDICATE THE GENERAL NATURE AND REQUIREMENTS. THEY DO NOT SHOW EVERY ACCESSORY AND ATTACHMENT, AND THEY DO NOT RELIEVE THE CONTRACTOR OF THE REQUIREMENTS OF THE SPECIFICATIONS AND SPECIAL PROVISIONS TO ASCERTAIN UTILITY REQUIREMENTS AND TO COORDINATE ACCORDINGLY, FURNISHING ALL ITEMS AND WORK NOT PROVIDED BY THE UTILITY, BUT NECESSARY FOR A COMPLETE SERVICE INSTALLATION IS REQUIRED AND SHALL BE INCLUDED IN THE ELECTRIC UTILITY SERVICE INSTALLATION PAY ITEM.



SEALING BUSHING DETAIL

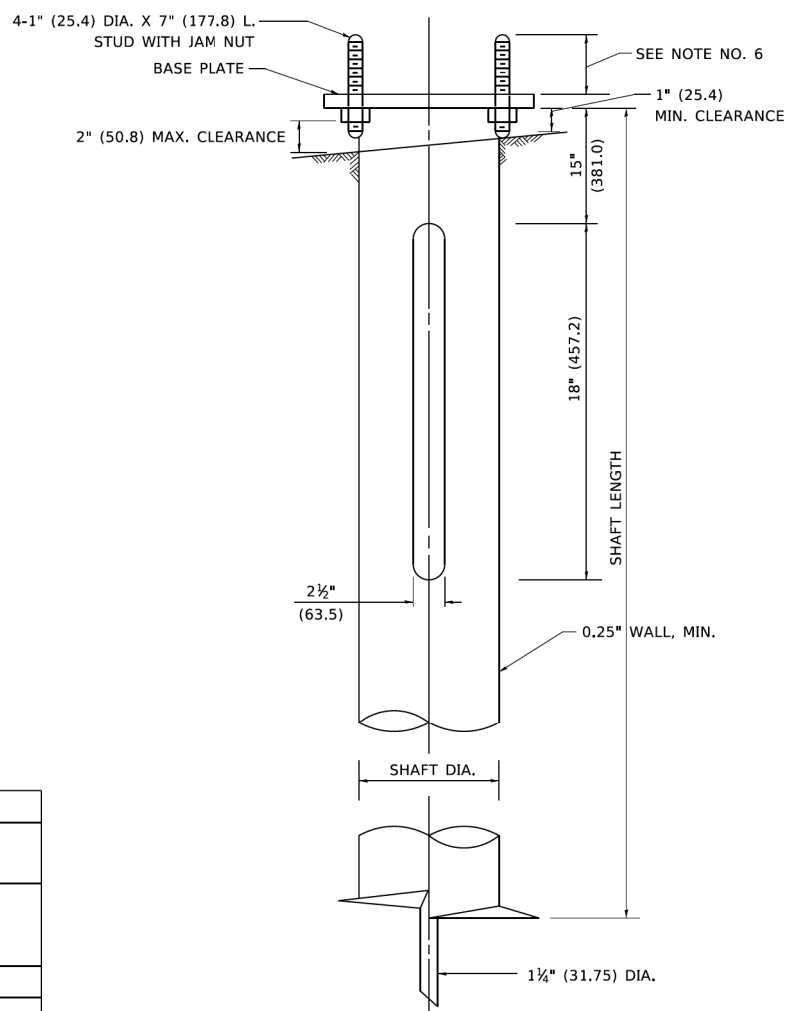
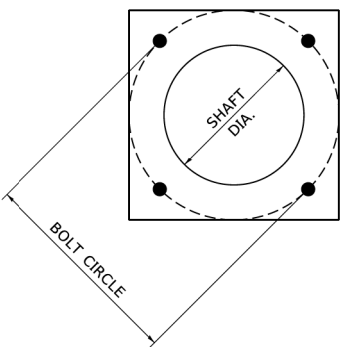
USER NAME = footemj PLOT SCALE = 50.0000 " / in. PLOT DATE = 4/19/2019	DESIGNED - DRAWN - CHECKED - MEA DATE -	REVISED - 03-03-06 REVISED - REVISED - REVISED -	STATE OF ILLINOIS DEPARTMENT OF TRANSPORTATION	ELECTRIC SERVICE INSTALLATION AERIAL, REMOTE DISCONNECT	F.A. RTE. SECTION COUNTY TOTAL SHEETS SHEET NO.
SCALE: NONE SHEET 1 OF 1 SHEETS STA. TO STA.				BE-220 CONTRACT NO.	ILLINOIS FED. AID PROJECT

DATE PLOTTED = 7/15/2023 12:29:21 PM
 PLOT SCALE = 3.3333 " / in.
 PLOT DATE = 7/15/2023
 FILE NAME = N:\Projects\2023\12-29-21 PM\12-29-21 PM.dgn

USER NAME = untitled PLOT SCALE = 3.3333 " / in. PLOT DATE = 7/15/2023	DESIGNED - DTJ DRAWN - DTJ CHECKED - JMV DATE - 7/14/2023	REVISED - REVISED - REVISED - REVISED -
--	--	--

SCALE: N.T.S. SHEET NO. 3 OF 9 SHEETS STA. TO STA.	LIGHTING DETAILS
--	-------------------------

RTE. SECTION COUNTY TOTAL SHEETS SHEET NO.	COOK 16 5	ILLINOIS FED. AID PROJECT
--	-----------------	---------------------------



NOTES

1. ALL DIMENSION IN INCHES (MILLIMETERS) UNLESS OTHERWISE SHOWN.
2. ALL MATERIAL SHALL BE GALVINIZED ACCORDING TO AASHTO M111, UNLESS OTHERWISE SPECIFIED.
3. ALL WELDS SHALL BE CONTINUOUS AND NOT LESS THAN 1#4" (6.35 mm) FILLET WELDS. THE WELDED FOUNDATION SHALL BE CAPABLE OF WITHSTANDING 10,000 FT/LBS (13558.18 n.m) OF INSTALLATION TORQUE APPLIED ABOUT THE AXIS OF THE FOUNDATION.
4. THE HELIX FOUNDATION SHAFT SHALL BE INSTALLED VERTICAL AND THE BASE PLATE SHALL BE IN LEVEL. THE BREAKAWAY COUPLINGS AND HARDWARE SHALL NOT BE USED TO ALIGN THE POLE INSTALLATION.
5. THE CABLE TRENCH SHALL BE BACKFILLED AND FIRMLY COMPACTED BEFORE THE INSTALLATION OF THE LIGHT POLE.
6. THE CONTRACTOR SHALL COORDINATE EXTENSION OF ANCHOR BOLTS ABOVE TOP OF THE BASE PLATE WITH THE BREAKAWAY DEVICE MANUFACTURER'S REQUIREMENTS.
7. ANY VOIDS WITHIN THE METAL FOUNDATION SHALL BE FILLED WITH FINE AGGREGATE.
8. METAL FOUNDATIONS SHALL BE INSTALLED IN UNDISTURBED SOIL. PREDRILLING A PILOT HOLE AND/OR BACKFILLING AROUND THE FOUNDATION IS NOT ALLOWED.
9. THE METAL FOUNDATION SHALL NOT BE INSTALLED TO A TORQUE WHICH EXCEEDS THE MANUFACTURER'S MAXIMUM TORQUE RATING NOR SHALL IT BE INSTALLED TO AN INSTALLATION TORQUE VALUE OF LESS THAN 3,500 FT LB (4,750 KNM). METAL FOUNDATIONS THAT ARE NOT INSTALLED TO FULL INSTALLATION DEPTH OR DO NOT ACHIEVE THE MINIMUM INSTALLATION TORQUE SHALL BE REMOVED AND REPLACED WITH A CONCRETE FOUNDATION AT NO ADDITIONAL COST.
10. THE BASEPLATE SHALL BE PERPENDICULAR TO THE SHAFT AXIS ($\pm 1^\circ$) AND THE HOLE CENTERLINE SHALL BE CONCENTRIC (± 0.188) TO THE SHAFT AXIS.
11. THE PILOT POINT AND SHAFT AXIS SHALL BE CONCENTRIC (± 0.125) AND IN LINE ($\pm 2^\circ$).
12. THE BASEPLATE SHALL BE STAMPED WITH THE MANUFACTURERS NAME AND DATE OF MANUFACTURE.

HELIX FOUNDATION SIZE

POLE MOUNTING HEIGHT	BOLT CIRCLE	SHAFT DIAMETER	SHAFT LENGTH	BASEPLATE
30 FT.	11 1/2"	8 3/8"	6 FT.	12"x12"x1"
31 FT.-35 FT.	11 1/2"	8 3/8"	6 FT.	12"x12"x1"
36 FT.-40FT.	15"	8 3/8"	6 FT.	15"x15"x1 1/4"
41 FT.-45 FT.	15"	8 3/8"	6 FT.	15"x15"x1 1/4"
46 FT.-50 FT.	15"	10"	8 FT.	15"x15"x1 1/4"

METAL HELIX FOUNDATION MATERIALS

ITEM	MATERIAL REQUIREMENT
BASEPLATE	AASHTO M 270M, GRADE 36 (M270M, GRADE 250)
SHAFT	ASTM A 252, GRADE 2 (PHOSPHOROUS 0.04% MAXIMUM, SULFUR 0.05% MAXIMUM)
HELIX SCREW	AASHTO M 183 (ASTM A 635)
PILOT POINT	AASHTO M 270 (ASTM A 575)
ANCHOR RODS/STUDS	AASHTO M 314 (ASTM F 1554)
HEXAGON NUTS	AASHTO M 291M (ASTM A 563) GRADE DH, OR AASHTO M 292 (ASTM A 194) GRADE 2H
WASHERS	AASHTO M 293 (ASTM F 436)

MODEL: Default
FILE NAME: p:\projects\1101\1101.dwg

USER NAME = footemj	DESIGNED -	REVISED -
PLOT SCALE = 50.0000" / in.	DRAWN - DLB	REVISED -
PLOT DATE = 4/19/2019	CHECKED -	REVISED -
	DATE - 02-27-07	REVISED -

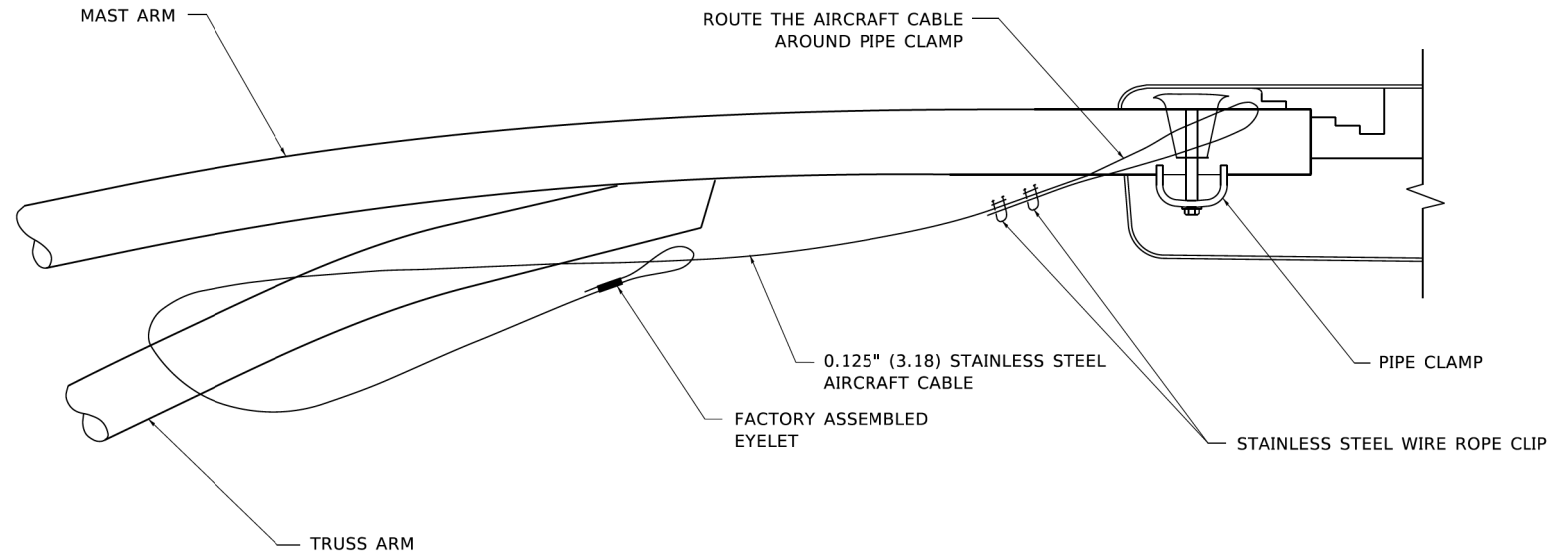
STATE OF ILLINOIS DEPARTMENT OF TRANSPORTATION		LIGHT POLE FOUNDATION, METAL		F.A. RTE.	SECTION	COUNTY	TOTAL SHEETS	SHEET NO.
		SCALE: NONE		SHEET 1 OF 1 SHEETS	STA. TO STA.	BE-305 CONTRACT NO. ILLINOIS FED. AID PROJECT		

DATE PLOTTED = 7/15/2023 12:29:29 PM
PLOT TABLE = N:\Projects\1101\1101.dwg
PLOT CONFIG = N:\Projects\1101\1101.dwg
FILE NAME = N:\Projects\1101\1101.dwg

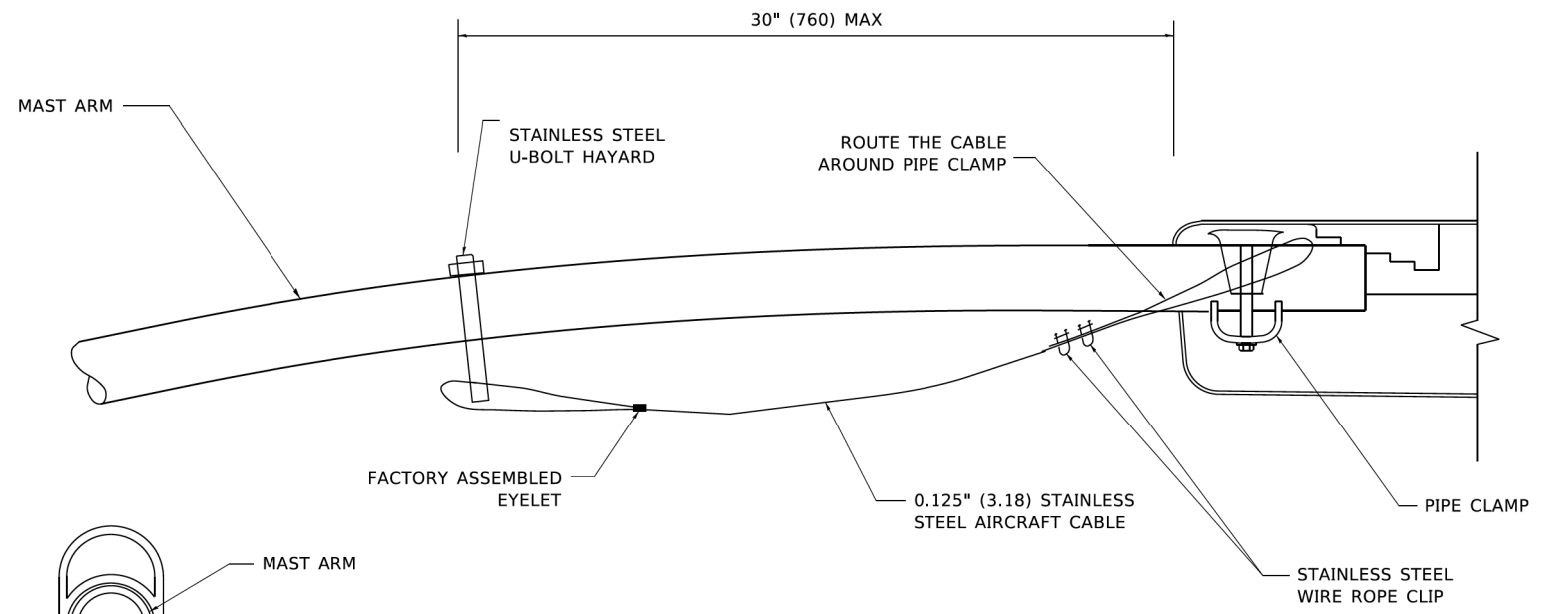
CiorbaGroup
8725 W. Higgins Rd, Ste 600, Chicago, IL 60631
P 773.775.4009 | www.ciorba.com

USER NAME = untitled	DESIGNED - DTJ	REVISED -
PLOT SCALE = 3.3333" / in.	DRAWN - DTJ	REVISED -
PLOT DATE = 7/15/2023	CHECKED - JMV	REVISED -
	DATE - 7/14/2023	REVISED -

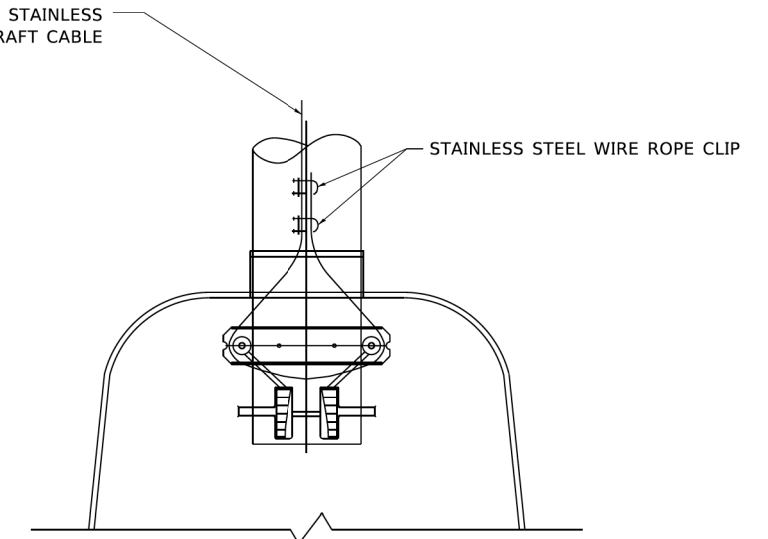
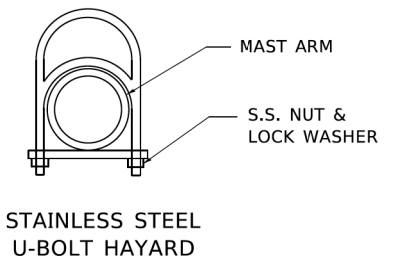
SCHOENBECK ROAD STREET LIGHTING VILLAGE OF MOUNT PROSPECT, ILLINOIS		LIGHTING DETAILS		RTE.	SECTION	COUNTY	TOTAL SHEETS	SHEET NO.
		SCALE: N.T.S.		SHEET NO. 4 OF 9 SHEETS	STA. TO STA.	COOK 16 6 ILLINOIS FED. AID PROJECT		



SIDE VIEW (TRUSS ARM)
N.T.S.



SIDE VIEW (SINGLE MEMBER OR DAVIT ARM)
N.T.S.



BOTTOM VIEW
N.T.S.

NOTES:

1. ALL DIMENSIONS ARE IN MILLIMETERS (INCHES) UNLESS OTHERWISE SHOWN.
2. CONTRACTOR SHALL ADJUST THE WIRE CLIP TO ELIMINATE ANY SLACK FROM THE WIRE ROPE.
3. THE 0.125" (3.18) STAINLESS STEEL AIRCRAFT CABLE SHALL REMAIN VISIBLE FROM THE GROUND LEVEL.
4. THE BREAKING STRENGTH OF THE CABLE SHALL BE 1700 LBS. MIN.

DATE PLOTTED = 7/15/2023 12:29:35 PM
 PLOT TABLE = N:\Projects\10821672\01\0821672.tbl
 PLOT CONFIG = N:\SAS\orders\CAD\Bentley\stencils\1-001\Plotting\CGI-PDF.plt
 FILE NAME = N:\VPROJ\10821672\01\CAD\Lighting\10821672.dgn

MODEL Default
 FILE NAME: p:\1\almsroom\dtd\Illinois.gov\PWIDOT\Documents\DOT_Offices\Illinois\1\Projects\10821672\01\CAD\NBA\CAD\sheet\01.dgn

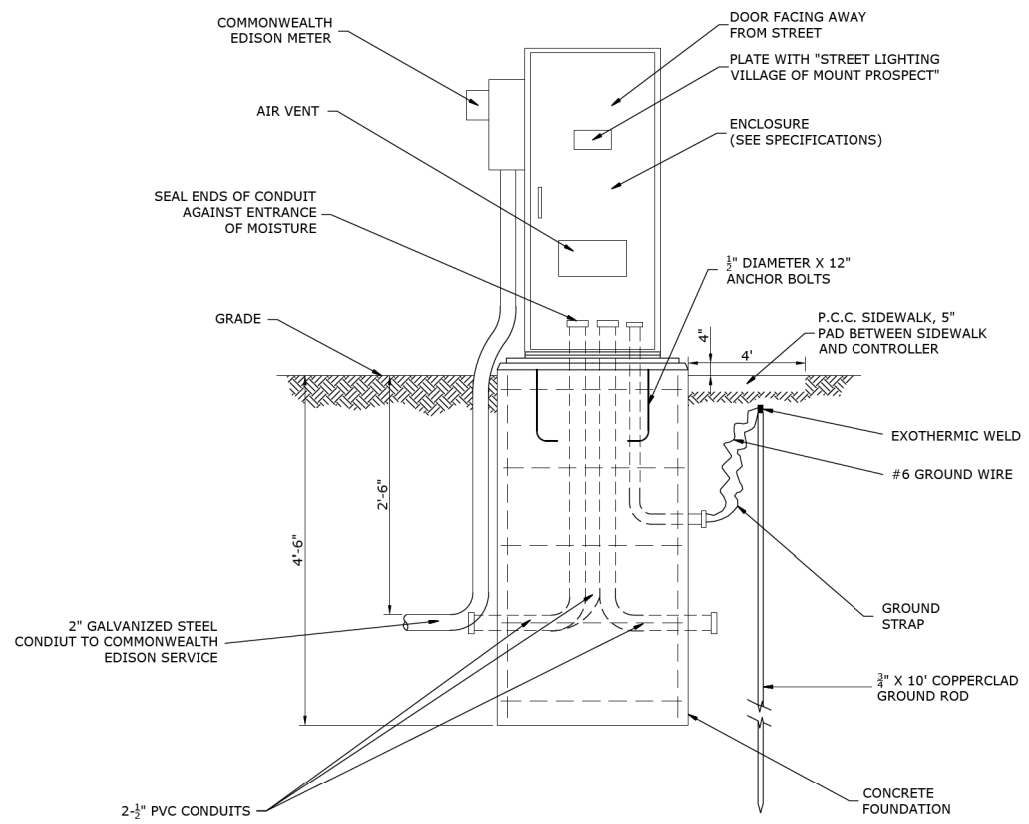
USER NAME = footemj	DESIGNED -	REVISED - 08-08-03
PLOT SCALE = 50.0000" / in.	DRAWN -	REVISED -
PLOT DATE = 4/19/2019	CHECKED -	REVISED -
	DATE -	REVISED -

STATE OF ILLINOIS DEPARTMENT OF TRANSPORTATION		LUMINAIRE SAFETY CABLE ASSEMBLY				F.A. RTE.	SECTION	COUNTY	TOTAL SHEETS	SHEET NO.
						SCALE: NONE		SHEET 1 OF 1 SHEETS	STA. TO STA.	BE-701 CONTRACT NO. ILLINOIS FED. AID PROJECT

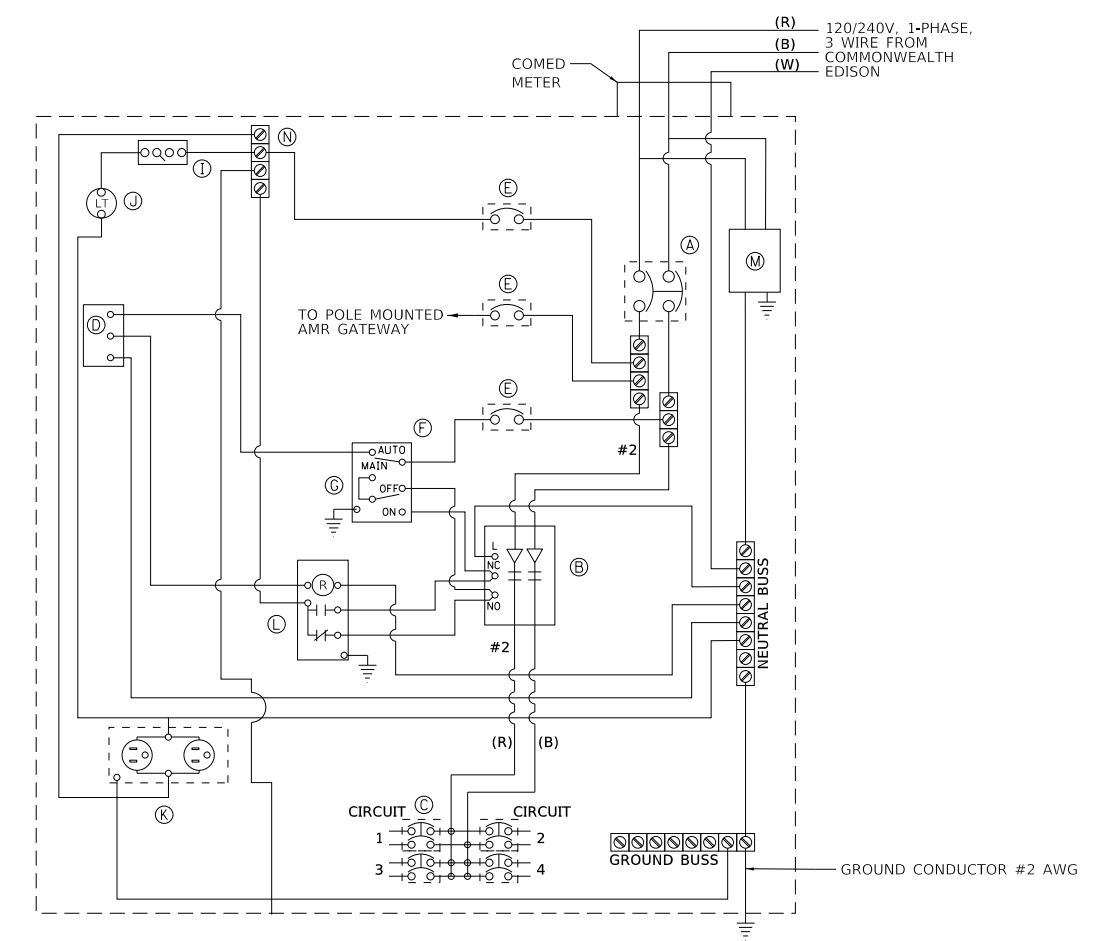


USER NAME = untitled	DESIGNED - DTJ	REVISED -
PLOT SCALE = 3.3333" / in.	DRAWN - DTJ	REVISED -
PLOT DATE = 7/15/2023	CHECKED - JMV	REVISED -
	DATE - 7/14/2023	REVISED -

SCHOENBECK ROAD STREET LIGHTING VILLAGE OF MOUNT PROSPECT, ILLINOIS		LIGHTING DETAILS				RTE.	SECTION	COUNTY	TOTAL SHEETS	SHEET NO.
						SCALE: N.T.S.		SHEET NO. 5 OF 9 SHEETS	STA. TO STA.	COOK 16 7 ILLINOIS FED. AID PROJECT



ELEVATION
LIGHTING CONTROLLER & FOUNDATION



DEVICE SCHEDULE		
	QUANTITY	DESCRIPTION
(A)	1	100 AMP CIRCUIT BREAKER, MOLDED CASE, THERMAL MAGNETIC, 2-POLE, SINGLE THROW, 600V FRAME, NON-INTERCHANGABLE TRIP, BOLT ON TYPE.
(B)	1	100 AMP, ELECTRICALLY OPERATED AND MECHANICALLY HELD LIGHTING CONTRACTOR, 2-POLE, 600 VOLT WITH 120 V COIL
(C)	4	120/240 VOLT 1 PHASE PANEL BOARD WITH 100 AMP COPPER MAINS TWO POLE, 30 AMP, 120 VOLT BOLT ON BRANCH CIRCUIT BREAKERS
(D)	1	TERMINAL BLOCK FOR REMOTE PHOTOCELL
(E)	3	THERMAL MAGNETIC, MOLDED CASE CIRCUIT BREAKER, 1 POLE, 15 AMP, 120 VOLT BOLT ON TYPE
(F)	1	CONTROL SWITCH, MOMENTARY CONTACT, SPDT, 15 AMP, 120 VOLT
(G)	1	CONTROL SWITCH, TOGGLE TYPE, SPDT, 20 AMP, 120 VOLT SPECIAL GRADE
(I)	1	MICRO SWITCH (MOUNTED WITH ACTUATOR TO SWITCH WHEN DOOR IS OPEN) 120 VOLT, 20 AMP
(J)	1	LED LIGHT FIXTURE VAPOR TIGHT WITH GLOBE, GUARD, AND MOUNTING BOX
(K)	1	120 VOLT, 20 AMP RECEPTACLE, SPECIFICATION GRADE IN NEMA 5-15R WEATHER PROOF BOX WITH FLAP-TYPE COVER. OUTLET TO BE GFI-TYPE.
(L)	1	POWER RELAY WITH 25 AMP CONTACTS RATED FOR CONTRACTOR INRUSH CURRENT - 120 VOLT COIL
(M)	1	SURGE ARRESTOR, 5 WIRE EDCO "4803 OR EQUAL
(N)	1	TERMINAL BLOCK, 120 VOLT, 50 AMP MAXIMUM WITH NUMBER OF TERMINALS AS INDICATED

- NOTES:**
- ALL CIRCUIT BREAKERS SHALL HAVE AN INTERRUPT RATING OF 18,000 AMPS
 - UL LISTED DEVICES/COMPONENTS SHALL BE USED
 - NO SPLICES OF WIRES IN CABINET
 - CONTROL WIRE TO BE #12 MTW
 - POWER WIRE SHALL BE RATED RHH/RHW 600 VOLTS OF SIZE INDICATED
 - LIGHTING CONTROLLER SHALL BE SERVICE ENTRANCE RATED
 - PANEL SHALL BE DEAD FRONT TO ALLOW OPERATION OF HOA SWITCH

120/240 VOLT CONTROLLER PANEL WIRING DIAGRAM

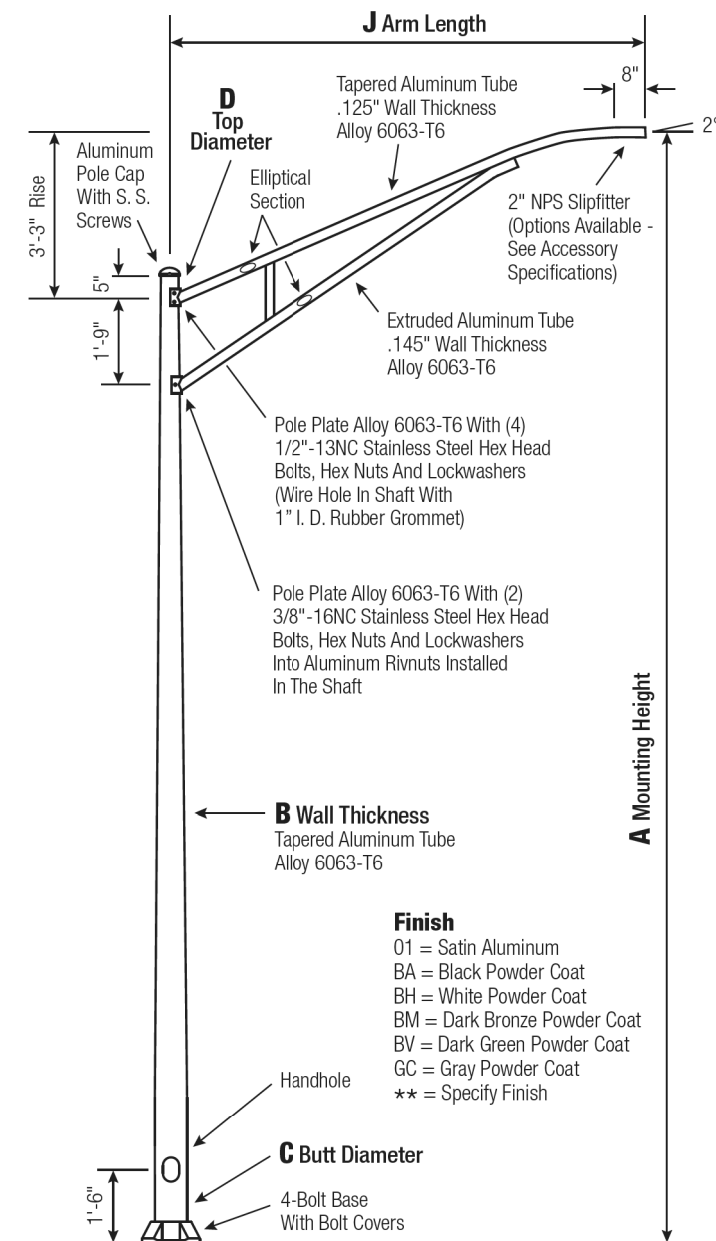
DATE PLOTTED = 7/15/2023 12:29:43 PM
 PEN TABLE =
 PLOT CONFIG =
 FILE NAME =

USER NAME =	DESIGNED -	REVISED -
untitled	DTJ	
	DRAWN -	REVISED -
	DTJ	
	CHECKED -	REVISED -
	JMV	
	DATE -	REVISED -
	7/14/2023	

RTE.	SECTION	COUNTY	TOTAL SHEETS	SHEET NO.
		COOK	16	8

ILLINOIS FED. AID PROJECT

RTA Round Tapered Aluminum Pole with Arms Single Truss — 4-Bolt Base



WARNING:
Do not install light pole without luminaire. *Satin Aluminum or Powder Coated Finish per Customer Specification.*

A Mtg. Hgt.	B Wall Thickness	C Butt Diameter	J Arm Length	Lum. Weight	MAXIMUM EPA					Old Cat. Number	Catalog Number
					90	100	110	120	130		
30	0.188"	8	12'	40	3.6	2.6	2.4	1.8	1.2	31-573	RTA30D8C4T1C-**

C Butt Dia.	D Top Dia.	F Bolt Cir. Dia.	G Base Sq.	H Bolt Proj.	I Bolt Size
8	6	11 - 12	11.25	2.75	1 x 36 x 4

CUSTOMER NAME: _____

PROJECT: _____ **LOCATION:** _____

NOTES: _____ **QUANTITY:** _____

RTA30D8C4T1C - 01
CATALOG NUMBER FINISH

Pole
Shaft and arm will be constructed of seamless extruded tube of 6063 Aluminum Alloy per the requirements of ASTM B221. The shaft assembly shall be full-length heat treated after base weld to produce a T6 temper.

Base Style
4-Bolt Cast Aluminum Base Flange of Alloy 356-T6 with Aluminum Bolt Covers (Alloy 356-F) and Stainless Steel Hex Head Attaching Screws.

Handhole
Reinforced, 4" x 6" curved Cast Aluminum Frame (Alloy 356-T6) with Aluminum Door and two (2) SS Hex Head Screws. Reinforced Frame will contain a tapped 3/8"-16NC Grounding Provision.

Anchorage
Anchorage Kit will include four (4) L-shaped Steel Anchor Bolts conforming to AASHTO M314-90 Grade 55. Ten inches (10") of threaded end will be galvanized per ASTM A153. Kits will contain four (4) Hex Nuts, four (4) Lock Washers, and four (4) Flat Washers (all components Galvanized Steel). A bolt circle template will be provided.

Vibration Damper
When determined necessary by Hapco, a Vibration Damper will be factory-installed inside the pole shaft. Customer specification of the damper is available.



EPA Notes: Effective Projected Area (EPA) in square feet. EPA's calculated using wind velocity (mph) indicated in accordance with 2009 AASHTO LTS-5 using a 25 year design life. Maximum EPA is based on the luminaire weight shown. Increased luminaire weight may reduce the maximum EPA. If weight is exceeded, or if other design life or code is required, please consult the factory.

hapco 26252 Hillman Highway
Abingdon, VA 24210
800.368.7171
www.hapco.com

DATE PLOTTED = 7/15/2023 12:29:55 PM
PLOT TABLE = N:\Projects\2023\12-29-2023\RTA30D8C4T1C.dwg
PLOT CONFIG = N:\Projects\2023\12-29-2023\RTA30D8C4T1C.dwg
FILE NAME = N:\Projects\2023\12-29-2023\RTA30D8C4T1C.dwg

USER NAME = untitled	DESIGNED - DTJ	REVISED -
PLOT SCALE = 3.3333 / in.	DRAWN - DTJ	REVISED -
PLOT DATE = 7/15/2023	CHECKED - JMV	REVISED -
	DATE - 7/14/2023	REVISED -

RT.	SECTION	COUNTY	TOTAL SHEETS	SHEET NO.
		COOK	16	9

ILLINOIS FED. AID PROJECT



Lumec RoadFocus LED cobra head luminaires feature a sleek design that provides seamless replacement of existing HID luminaires. RoadFocus is available in three sizes, offers multiple lumen packages, and a complete array of optical distributions, making it an outstanding solution for all types of roadway applications. Includes Service Tag, innovative way to provide assistance throughout the life of the product.

Ordering guide

example: RFM-108W48LED3K-G2-R2M-UNV-DMG-HS-PH8-RCD7-GY3

Series	LED module	CCT	Generation	Distribution	Voltage	Options	Controls ⁴	Options	Finish
RFM			G2						
RFM RoadFocus medium	130W32LED ⁷ 135W40LED ⁷ 55W48LED ¹² 80W48LED 108W48LED 160W48LED 50W60LED ¹⁴ 75W60LED ¹⁴ 100W60LED ¹⁴ 120W60LED ¹⁴ 160W60LED ¹⁴ 170W60LED ¹⁴	4K 4000K 3K 3000K 2.7K ¹¹ 2700K	G2 Generation 2	Type 2 R2S Type II short (ASYM) R2M Type II Medium (ASYM) Type 3 R3S Type III short (ASYM) R3M Type III Medium (ASYM) Type 4 Type IV (ASYM) Type 5 Type V (SYMM)	UNV 120-277V HVV 347-480V	DALI ¹ Digitally addressable lighting interface DMG ⁵ 0-10V SRD ⁶ Sensor ready driver, standard configuration SRD1 ⁶ Sensor ready driver, alternate configuration		2C Two clamp with 4 bolts API Factory installed NEMA label, ANSI C136.15-2015 compliant FAWS ⁷ Field adjustable wattage selector CSS ^{2,5} Cul-de-Sac Shield FSS ^{2,5} Front Side Shield HS ^{2,5} House Side Shield LSS ^{2,5} Left Side Shield RSS ^{2,5} Right Side Shield NRC ⁸ No receptacle NYBC 4-position terminal block PH8 ^{1,10} Twist-lock photoelectric cell, UNV (120-277VAC) PH8/347 ^{10,13} Twist-lock photoelectric cell (347VAC) PH8/480 ^{10,13} Twist-lock photoelectric cell (480VAC) PHXL ^{1,10} Twist-lock photoelectric cell, extended life, UNV (120-277VAC) PH9 ¹⁰ Shorting cap RCD ^{9,9} Tool less receptacle for twist-lock photocell or shorting cap, 5-pin (optional) RCD7 ^{9,5} Tool less receptacle for twist-lock photocell or shorting cap, 7-pin (standard) SP2 20kV / 10kA Surge protector TLRSR ⁶ SR receptacle BAC ¹⁶ Meets the requirements of the Buy American Act of 1933 (BAA)	BK Black BR Bronze GY3 Gray WH White

¹ Not available with HVV. ⁸ Not available with PH8, PH8/347, PH8/480, PHXL, PH9, DALI, SRD or SRD1 Driver Options. ¹⁶ Failure to properly select the "BAC" suffix could result in you receiving product that is not BAA compliant product with no recourse for an RMA or refund. This BAC designation hereunder does not address (i) the applicability of, or availability of a waiver under, the Trade Agreements Act, or (ii) the "Buy America" domestic content requirements imposed on states, localities, and other non-federal entities as a condition of receiving funds administered by the Department of Transportation or other federal agencies. ¹⁷ Consult Signify to confirm whether specific accessories are BAA-compliant.

² Refer to Accessories section to confirm compatibility of shields with optical distribution. ⁹ Not available with SRD Driver Options. ¹⁰ Either RCD or RCD7 must be selected for this option. ¹¹ Extended lead-time may apply. Consult factory. ¹² FAWS table accuracy +/- 15% on these models. ¹³ Not available with UNV. ¹⁴ Only available with R2M or R3M distributions. ¹⁵ 1 shield provided per LED light engine.

³ Use of photoelectric cell or shorting cap is required to ensure proper illumination. ⁴ Select either DALI or DMG or SRD or SRD1 mandatory option. ⁵ Please note this integrated feature come standard with RoadFocus. ⁶ Only available with SRD or SRD1 Driver Options. ⁷ Only available with DMG Driver Options.

Accessories¹⁷ (must be ordered as separate line item - quickly and easily installed in the field)

Interact City connector node (Contact the factory for additional support when connected lighting or additional services are desired.)

Shielding accessories

Description	Luminaire Option Code	Accessory Ordering Code		Shield vs Distribution Compatibility					
		12/16 LED version*	20 LED version*	R2M	R2S	R3M	R3S	4	5
Cul-de-sac shield	CSS	ACC-LG66V16LED-CSS	ACC-LG66V20LED-CSS	Yes	Yes	Yes	Yes	Yes	Yes
Front side shield	FSS	ACC-LG66V16LED-FSS	ACC-LG66V20LED-FSS	Yes	Yes	Yes	Yes	No	Yes
House side shield	HS	ACC-LG66V16LED-HS	ACC-LG66V20LED-HS	Yes	Yes	Yes	Yes	Yes	No
Left side shield	LSS	ACC-LG66V16LED-LSS	ACC-LG66V20LED-LSS	Yes	Yes	Yes	Yes	Yes	Yes
Right side shield	RSS	ACC-LG66V16LED-RSS	ACC-LG66V20LED-RSS	Yes	Yes	Yes	Yes	Yes	Yes

*Refer to Wattage table to confirm light engine configuration. Example, if configuration is 2x16LED, 2 of the desired shields must be ordered per luminaire.

RFM RoadFocus

LED Cobra head (medium)

3000K LED Lumen values

Ordering Code	Color Temp.	Type R2M			Type R2S			Type R3M			Type R3S			Type 4			Type 5		
		Lumen Output	Efficacy (LPW)	BUG Rating	Lumen Output	Efficacy (LPW)	BUG Rating	Lumen Output	Efficacy (LPW)	BUG Rating	Lumen Output	Efficacy (LPW)	BUG Rating	Lumen Output	Efficacy (LPW)	BUG Rating	Lumen Output	Efficacy (LPW)	BUG Rating
RFM-130W32LED	3000	13,990	109	B3-U0-G2	14,666	114	B3-U0-G2	14,045	109	B3-U0-G2	14,233	111	B2-U0-G2	13,979	109	B2-U0-G3	14,541	113	B4-U0-G2
RFM-135W40LED	3000	15,169	112	B3-U0-G3	N/A	N/A	N/A	15,251	113	B3-U0-G3	N/A	N/A	N/A	N/A	N/A	N/A	N/A	N/A	N/A
RFM-55W48LED	3000	7,268	132	B2-U0-G1	7,620	138	B2-U0-G1	7,297	132	B2-U0-G1	7,395	134	B1-U0-G2	7,263	132	B1-U0-G2	7,555	137	B3-U0-G1
RFM-80W48LED	3000	10,422	129	B2-U0-G2	10,926	136	B2-U0-G2	10,463	130	B2-U0-G2	10,603	132	B2-U0-G2	10,414	129	B2-U0-G2	10,832	134	B4-U0-G2
RFM-108W48LED	3000	13,155	124	B3-U0-G2	13,792	130	B3-U0-G2	13,208	125	B3-U0-G2	13,385	126	B2-U0-G2	13,146	124	B2-U0-G2	13,674	129	B4-U0-G2
RFM-160W48LED	3000	18,211	113	B3-U0-G3	19,092	119	B3-U0-G2	18,283	114	B3-U0-G3	18,528	115	B2-U0-G3	18,197	113	B3-U0-G3	18,928	118	B4-U0-G2
RFM-50W60LED	3000	7,643	146	B2-U0-G2	N/A	N/A	N/A	7,684	147	B2-U0-G2	N/A	N/A	N/A	N/A	N/A	N/A	N/A	N/A	N/A
RFM-75W60LED	3000	10,439	136	B2-U0-G2	N/A	N/A	N/A	10,495	136	B2-U0-G2	N/A	N/A	N/A	N/A	N/A	N/A	N/A	N/A	N/A
RFM-100W60LED	3000	12,945	131	B3-U0-G2	N/A	N/A	N/A	13,015	131	B3-U0-G2	N/A	N/A	N/A	N/A	N/A	N/A	N/A	N/A	N/A
RFM-120W60LED	3000	15,302	125	B3-U0-G3	N/A	N/A	N/A	15,384	126	B3-U0-G3	N/A	N/A	N/A	N/A	N/A	N/A	N/A	N/A	N/A
RFM-150W60LED	3000	18,139	122	B3-U0-G3	N/A	N/A	N/A	18,237	122	B3-U0-G3	N/A	N/A	N/A	N/A	N/A	N/A	N/A	N/A	N/A
RFM-170W60LED	3000	20,002	118	B3-U0-G3	N/A	N/A	N/A	20,110	118	B3-U0-G3	N/A	N/A	N/A	N/A	N/A	N/A	N/A	N/A	N/A

2700K LED Lumen values

Ordering Code	Color Temp.	Type R2M			Type R2S			Type R3M			Type R3S			Type 4			Type 5		
		Lumen Output	Efficacy (LPW)	BUG Rating	Lumen Output	Efficacy (LPW)	BUG Rating	Lumen Output	Efficacy (LPW)	BUG Rating	Lumen Output	Efficacy (LPW)	BUG Rating	Lumen Output	Efficacy (LPW)	BUG Rating	Lumen Output	Efficacy (LPW)	BUG Rating
RFM-130W32LED	2700	12,829	100	B3-U0-G2	13,449	104	B3-U0-G2	14,045	109	B3-U0-G2	13,052	109	B2-U0-G2	12,819	100	B2-U0-G3	13,334	104	B4-U0-G2
RFM-135W40LED	2700	13,860	103	B3-U0-G3	N/A	N/A	N/A	13,935	103	B3-U0-G2	N/A	N/A	N/A	N/A	N/A	N/A	N/A	N/A	N/A
RFM-55W48LED	2700	6,665	121	B2-U0-G1	6,988	127	B2-U0-G1	7,297	132	B2-U0-G1	6,781	132	B1-U0-G2	6,660	121	B1-U0-G2	6,928	126	B3-U0-G1
RFM-80W48LED	2700	9,557	119	B2-U0-G2	10,019	124	B2-U0-G2	10,560	131	B2-U0-G2	9,723	131	B2-U0-G2	9,550	119	B2-U0-G2	9,933	123	B4-U0-G2
RFM-108W48LED	2700	12,064	114	B3-U0-G2	12,648	119	B3-U0-G2	13,208	125	B3-U0-G2	12,274	125	B2-U0-G2	12,055	114	B2-U0-G2	12,539	118	B4-U0-G2
RFM-160W48LED	2700	16,700	104	B3-U0-G3	17,508	109	B3-U0-G2	18,283	114	B3-U0-G3	16,991	114	B2-U0-G3	16,687	104	B3-U0-G3	17,357	108	B4-U0-G2
RFM-50W60LED	2700	6,983	134	B2-U0-G2	N/A	N/A	N/A	7,021	134	B2-U0-G1	N/A	N/A	N/A	N/A	N/A	N/A	N/A	N/A	N/A
RFM-75W60LED	2700	9,538	124	B2-U0-G2	N/A	N/A	N/A	9,589	125	B2-U0-G2	N/A	N/A	N/A	N/A	N/A	N/A	N/A	N/A	N/A
RFM-100W60LED	2700	11,828	119	B2-U0-G2	N/A	N/A	N/A	11,892	120	B2-U0-G2	N/A	N/A	N/A	N/A	N/A	N/A	N/A	N/A	N/A
RFM-120W60LED	2700	13,982	115	B3-U0-G3	N/A	N/A	N/A	14,057	115	B3-U0-G2	N/A	N/A	N/A	N/A	N/A	N/A	N/A	N/A	N/A
RFM-150W60LED	2700	16,574	111	B3-U0-G3	N/A	N/A	N/A	16,663	112	B3-U0-G3	N/A	N/A	N/A	N/A	N/A	N/A	N/A	N/A	N/A
RFM-170W60LED	2700	18,276	108	B3-U0-G3	N/A	N/A	N/A	18,374	108	B3-U0-G3	N/A	N/A	N/A	N/A	N/A	N/A	N/A	N/A	N/A

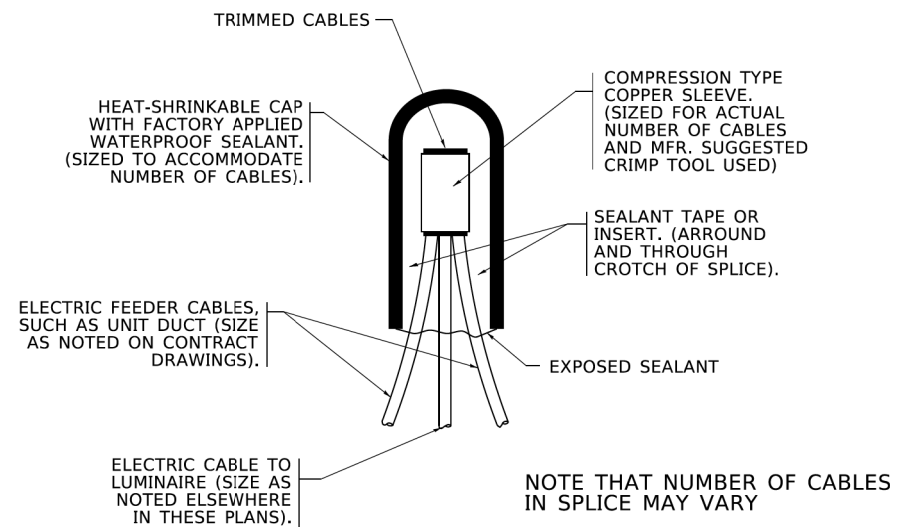
Actual performance may vary due to installation variables including optics, mounting/ceiling height, dirt depreciation, light loss factor, etc.; highly recommended to confirm performance with a layout - contact Applications at signify.com/outdoorluminaires. Consult DLC QPL to confirm your specific fixture selection is DLC approved. Note: Some data may be scaled based on tests of similar but not identical luminaires.

DATE PLOTTED = 7/15/2023 12:29:59 PM
PEN TABLE = N:\Projects\2023\12\29\2023_12_29_12:29:59 PM\RFM-RoadFocus-LED-Cobra-head-medium.dgn
PLOT CONFIG = N:\Projects\2023\12\29\2023_12_29_12:29:59 PM\RFM-RoadFocus-LED-Cobra-head-medium.dgn
FILE NAME = N:\Projects\2023\12\29\2023_12_29_12:29:59 PM\RFM-RoadFocus-LED-Cobra-head-medium.dgn

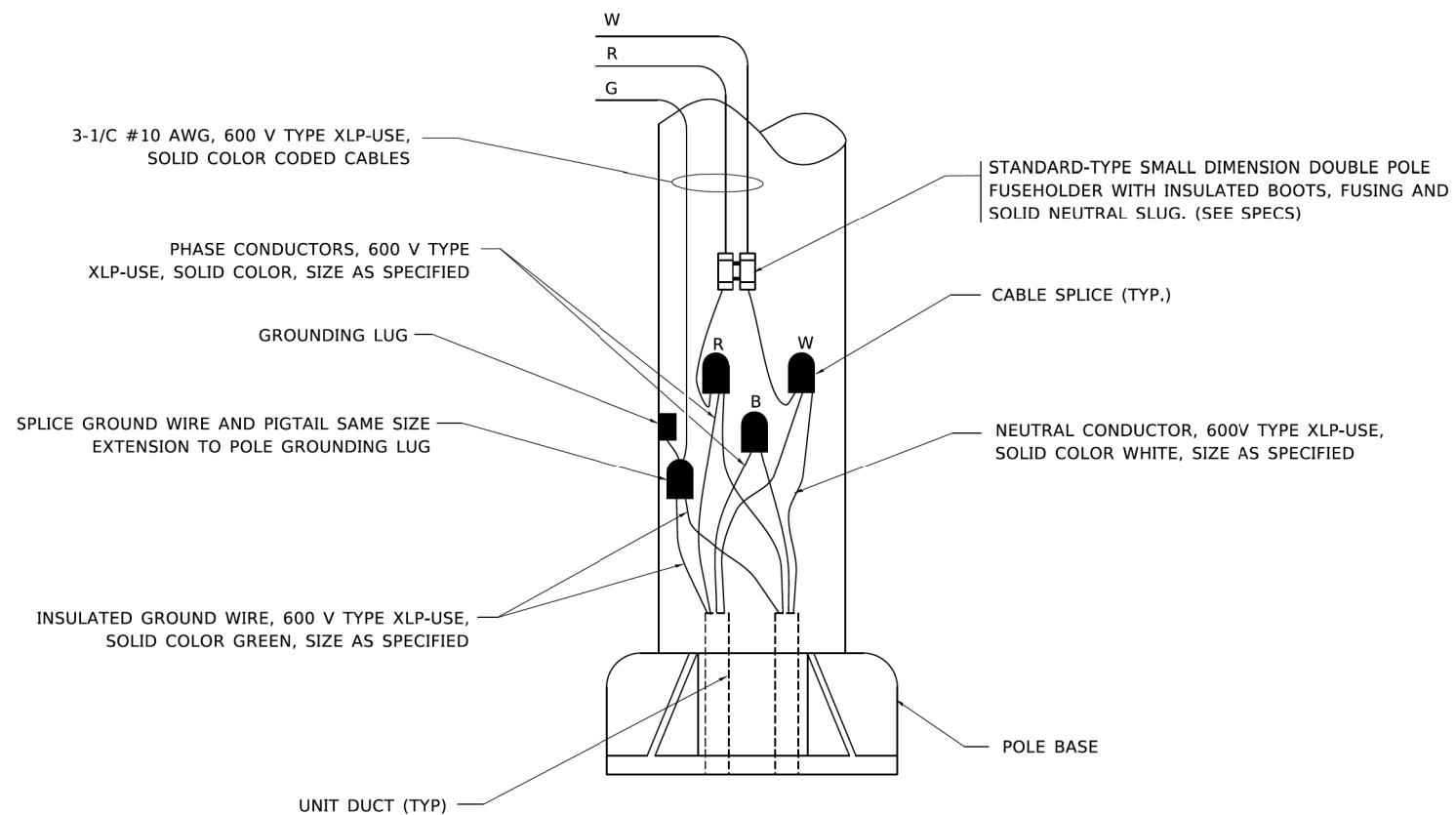


USER NAME = untitled	DESIGNED - DTJ	REVISED -
PLOT SCALE = 3.3333 / in.	CHECKED - JMV	REVISED -
PLOT DATE = 7/15/2023	DATE - 7/14/2023	REVISED -

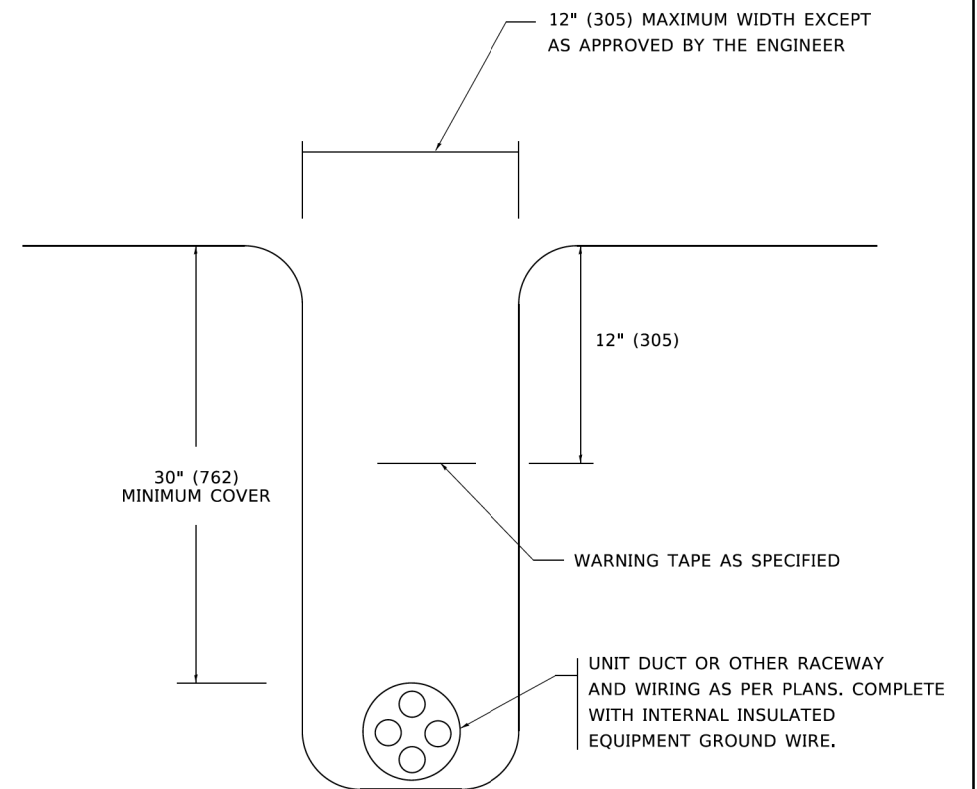
RTE.	SECTION	COUNTY	TOTAL SHEETS	SHEET NO.
		COOK	16	10
ILLINOIS FED. AID PROJECT				



TYPICAL SPLICE DETAIL
N.T.S.



POLE WIRING DETAIL
N.T.S.



TYPICAL WIRING IN TRENCH DETAIL
N.T.S.

USER NAME = leysa	DESIGNED -	REVISED - 02/04/2020
	DRAWN -	REVISED -
PLOT SCALE = 50.0000 " / in.	CHECKED -	REVISED -
PLOT DATE = 3/2/2020	DATE - 08/08/2003	REVISED -

STATE OF ILLINOIS
DEPARTMENT OF TRANSPORTATION

MISC. ELECTRICAL DETAILS
SHEET A

F.A. RTE.	SECTION	COUNTY	TOTAL SHEETS	SHEET NO.
BE-702		CONTRACT NO.		
ILLINOIS FED. AID PROJECT				

SCALE: NONE SHEET 1 OF 1 SHEETS STA. TO STA.

USER NAME = untitled	DESIGNED - DTJ	REVISED -
	DRAWN - DTJ	REVISED -
PLOT SCALE = 3.3333 " / in.	CHECKED - JMV	REVISED -
PLOT DATE = 7/15/2023	DATE - 7/14/2023	REVISED -

SCHOENBECK ROAD
STREET LIGHTING
VILLAGE OF MOUNT PROSPECT, ILLINOIS

LIGHTING DETAILS

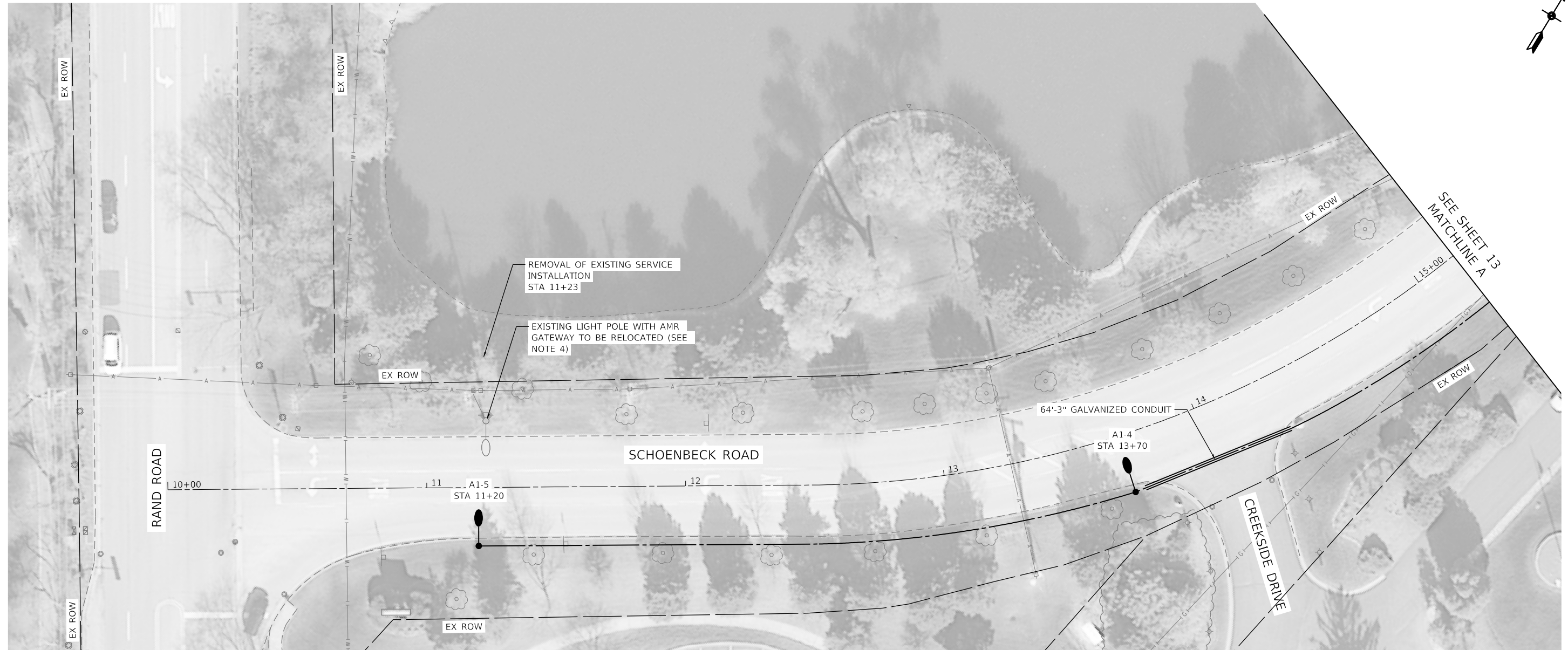
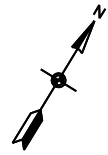
RT.	SECTION	COUNTY	TOTAL SHEETS	SHEET NO.
		COOK	16	11
ILLINOIS FED. AID PROJECT				

SCALE: N.T.S. SHEET NO. 9 OF 9 SHEETS STA. TO STA.

DATE PLOTTED = 7/15/2023 12:28:05 PM
 PLOT TABLE = N:\P\1621672\01\0021672.tbl
 PLOT CONFIG = N:\S\standards\CAD\standards\l-001\plotting\cgl-plc.tg
 FILE NAME = N:\P\1621672\01\CADD\Sheet\Lighting\0021672.tbl-sh-17.dwg-1.dwg

MODEL Default
 FILE NAME: p:\1\l\room\dot\illinois\gov\p\1621672\01\0021672.tbl\CADD\Sheet\CableSheet\02.dwg

CiorbaGroup
 8725 W. Higgins Rd, Ste 600, Chicago, IL 60631
 P 773.775.4009 | www.ciorba.com

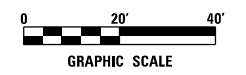


LEGEND

- EXISTING LIGHT POLE AND LUMINAIRE
- EXISTING MAST ARM AND LUMINAIRE TO BE REMOVED
- LIGHT STANDARD, 30 FT. M.H., 12 FT. CLAMP-ON MAST ARM, 120W LED LUMINAIRE
- PROPOSED HANDHOLE
- PROPOSED LIGHTING CONTROLLER
- PROPOSED UNIT DUCT WITH 2-1/C No. 6 & 1-1/C No. 8 GROUND, 600V (XLP-TYPE USE), 1" DIA. OR AS NOTED
- PROPOSED RIGID GALVANIZED STEEL CONDUIT

CONTROLLER IDENTIFICATION (TYP.)
 CIRCUIT NUMBER (TYP.)
 POLE NUMBER (TYP.)

- NOTES:**
1. LIGHTING UNIT SETBACK SHALL BE 3 FEET FROM FACE OF CURB TO CENTER OF FOUNDATION UNLESS NOTED OTHERWISE.
 2. OFFSET OF LIGHTING UNITS NEAR DRIVEWAYS SHALL MAINTAIN A MINIMUM OF 6 FEET FROM EDGE OF DRIVEWAY TO EDGE OF FOUNDATION.
 3. UTILITIES LOCATIONS SHALL BE VERIFIED IN THE FIELD PRIOR TO CONSTRUCTION.
 4. REMOVAL OF RELOCATED POLE SHALL BE PAID FOR AS REMOVE AND RE-ERECT EXISTING LIGHTING UNIT.



DATE PLOTTED = 7/15/2023 12:28:13 PM
 PEN TABLE = N:\Projects\18021672\01\0021672.dwg
 PLOT CONFIG = N:\Projects\18021672\01\0021672.dwg
 FILE NAME = N:\Projects\18021672\01\0021672.dwg



USER NAME = untitled	DESIGNED - DTJ	REVISED -
	DRAWN - DTJ	REVISED -
PLOT SCALE = 40.0000' / in.	CHECKED - JMV	REVISED -
PLOT DATE = 7/15/2023	DATE - 7/14/2023	REVISED -

**SCHOENBECK ROAD
 STREET LIGHTING
 VILLAGE OF MOUNT PROSPECT, ILLINOIS**

LIGHTING LIGHTING PLAN			
SCALE: 1" = 20'	SHEET NO. 1 OF 4 SHEETS	STA.	TO STA.

RTE.	SECTION	COUNTY	TOTAL SHEETS	SHEET NO.
		COOK	16	12

ILLINOIS FED. AID PROJECT



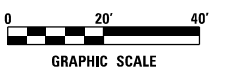
LEGEND

- ○ EXISTING LIGHT POLE AND LUMINAIRE
- ⊕ ○^R EXISTING MAST ARM AND LUMINAIRE TO BE REMOVED
- LIGHT STANDARD, 30 FT. M.H., 12 FT. CLAMP-ON MAST ARM, 120W LED LUMINAIRE
- ▣ PROPOSED HANDHOLE
- ⊠ PROPOSED LIGHTING CONTROLLER
- - - PROPOSED UNIT DUCT WITH 2-1/2" No. 6 & 1-1/2" No. 8 GROUND, 600V (XLP-TYPE USE), 1" DIA. OR AS NOTED
- ══ PROPOSED RIGID GALVANIZED STEEL CONDUIT

- CONTROLLER IDENTIFICATION (TYP.)
- CIRCUIT NUMBER (TYP.)
- A1-1 — POLE NUMBER (TYP.)

NOTES:

1. LIGHTING UNIT SETBACK SHALL BE 3 FEET FROM FACE OF CURB TO CENTER OF FOUNDATION UNLESS NOTED OTHERWISE.
2. OFFSET OF LIGHTING UNITS NEAR DRIVEWAYS SHALL MAINTAIN A MINIMUM OF 6 FEET FROM EDGE OF DRIVEWAY TO EDGE OF FOUNDATION.
3. UTILITIES LOCATIONS SHALL BE VERIFIED IN THE FIELD PRIOR TO CONSTRUCTION.



DATE PLOTTED = 7/15/2023 12:38:21 PM
 PEN TABLE = N:\Projects\2023\12-38-21 PM\PenTable.tbl
 PLOT CONFIG = N:\Projects\2023\12-38-21 PM\PlotConfig.dwg
 FILE NAME = N:\Projects\2023\12-38-21 PM\Lighting\0021672101-ant-19282.dgn



USER NAME = untitled	DESIGNED - DTJ	REVISED -
	DRAWN - DTJ	REVISED -
PLOT SCALE = 40.0000' / in.	CHECKED - JMV	REVISED -
PLOT DATE = 7/15/2023	DATE - 7/14/2023	REVISED -

**SCHOENBECK ROAD
 STREET LIGHTING
 VILLAGE OF MOUNT PROSPECT, ILLINOIS**

PROPOSED LIGHTING PLAN			
SCALE: 1" = 20'	SHEET NO. 1 OF 4 SHEETS	STA.	TO STA.

RTE.	SECTION	COUNTY	TOTAL SHEETS	SHEET NO.
		COOK	16	13

ILLINOIS FED. AID PROJECT

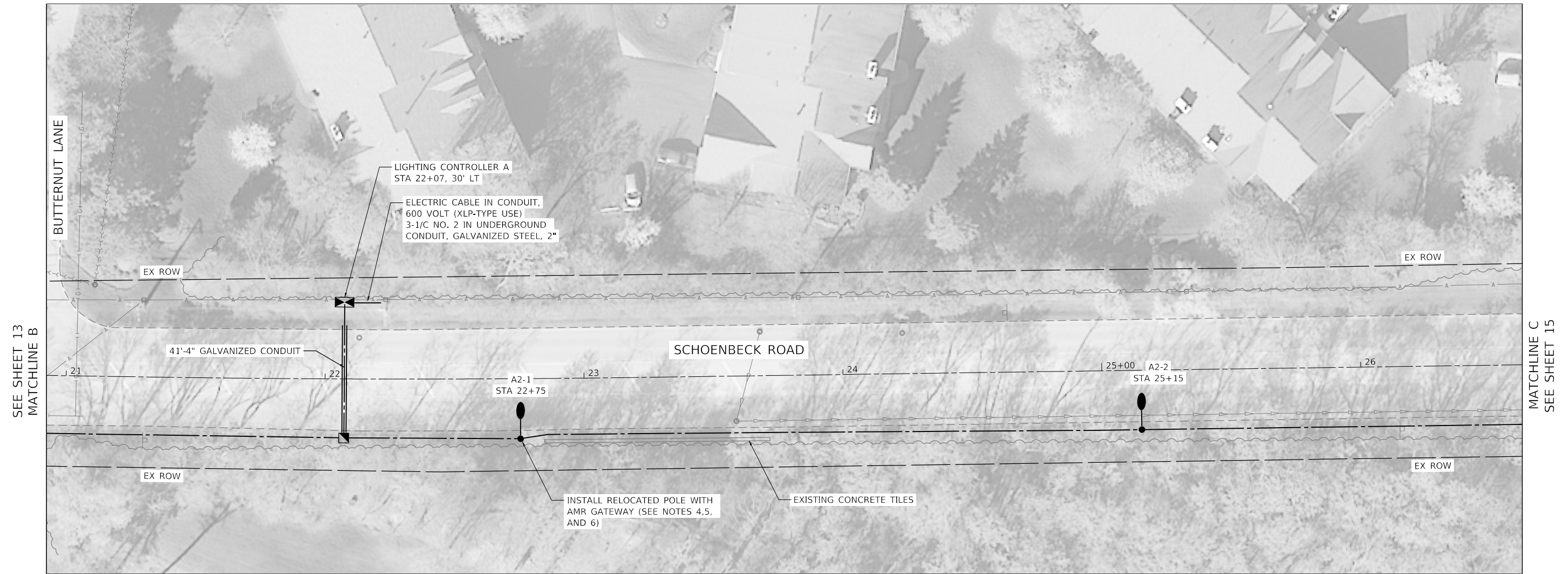


LEGEND

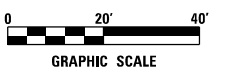
- EXISTING LIGHT POLE AND LUMINAIRE
- EXISTING MAST ARM AND LUMINAIRE TO BE REMOVED
- LIGHT STANDARD, 30 FT. M.H., 12 FT. CLAMP-ON MAST ARM, 120W LED LUMINAIRE
- PROPOSED HANDHOLE
- PROPOSED LIGHTING CONTROLLER
- PROPOSED UNIT DUCT WITH 2-1/2" No. 6 & 1-1/2" No. 8 GROUND, 600V (XLP-TYPE USE), 1" DIA. OR AS NOTED
- PROPOSED RIGID GALVANIZED STEEL CONDUIT
- CONTROLLER IDENTIFICATION (TYP.)
- CIRCUIT NUMBER (TYP.)
- POLE NUMBER (TYP.)

NOTES:

1. LIGHTING UNIT SETBACK SHALL BE 3 FEET FROM FACE OF CURB TO CENTER OF FOUNDATION UNLESS NOTED OTHERWISE.
2. OFFSET OF LIGHTING UNITS NEAR DRIVEWAYS SHALL MAINTAIN A MINIMUM OF 6 FEET FROM EDGE OF DRIVEWAY TO EDGE OF FOUNDATION.
3. UTILITIES LOCATIONS SHALL BE VERIFIED IN THE FIELD PRIOR TO CONSTRUCTION.
4. INSTALLATION OF RELOCATED POLE SHALL BE PAID FOR AS REMOVE AND RE-ERECT EXISTING LIGHTING UNIT.
5. INSTALL POLE MOUNTED PHOTOCELL, 3-1/2" #10 CABLE, AND 1" DUCT CABLE. THIS WORK SHALL BE INCLUDED IN THE COST OF THE LIGHTING CONTROLLER.
6. INSTALL 2-1/2" #10 CABLE IN 1" DUCT FOR POWER FEED TO AMR GATEWAY.



DATE PLOTTED = 7/15/2023 12:30:28 PM
 PEN TABLE = N:\Projects\10021672\01\0021672.tbl
 PLOT CONFIG = N:\Projects\10021672\01\0021672.tbl
 FILE NAME = N:\Projects\10021672\01\0021672.tbl



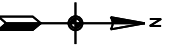
USER NAME = untitled	DESIGNED - DTJ	REVISED -
	DRAWN - DTJ	REVISED -
PLOT SCALE = 40.0000' / in.	CHECKED - JMV	REVISED -
PLOT DATE = 7/15/2023	DATE - 7/14/2023	REVISED -

**SCHOENBECK ROAD
 STREET LIGHTING
 VILLAGE OF MOUNT PROSPECT, ILLINOIS**

PROPOSED LIGHTING PLAN			
SCALE: 1" = 20'	SHEET NO. 1 OF 4 SHEETS	STA. TO STA.	

RTE.	SECTION	COUNTY	TOTAL SHEETS	SHEET NO.
		COOK	16	14

ILLINOIS FED. AID PROJECT



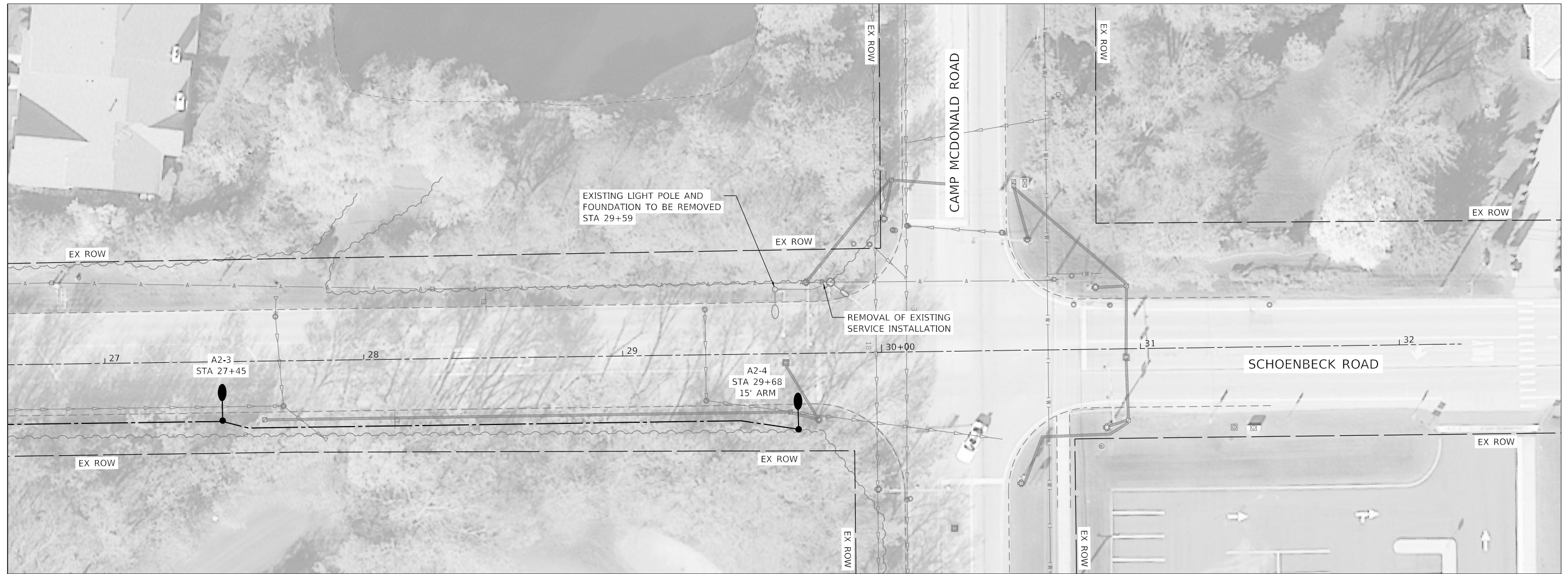
LEGEND

- ○ EXISTING LIGHT POLE AND LUMINAIRE
- ⊕ ○^R EXISTING MAST ARM AND LUMINAIRE TO BE REMOVED
- ○ LIGHT STANDARD, 30 FT. M.H., 12 FT. CLAMP-ON MAST ARM, 120W LED LUMINAIRE
- PROPOSED HANDHOLE
- ⊠ PROPOSED LIGHTING CONTROLLER
- - - PROPOSED UNIT DUCT WITH 2-1/2" No. 6 & 1-1/2" No. 8 GROUND, 600V (XLP-TYPE USE), 1" DIA. OR AS NOTED
- ==== PROPOSED RIGID GALVANIZED STEEL CONDUIT

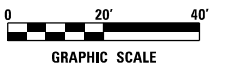
- CONTROLLER IDENTIFICATION (TYP.)
- CIRCUIT NUMBER (TYP.)
- A1-1 — POLE NUMBER (TYP.)

NOTES:

1. LIGHTING UNIT SETBACK SHALL BE 3 FEET FROM FACE OF CURB TO CENTER OF FOUNDATION UNLESS NOTED OTHERWISE.
2. OFFSET OF LIGHTING UNITS NEAR DRIVEWAYS SHALL MAINTAIN A MINIMUM OF 6 FEET FROM EDGE OF DRIVEWAY TO EDGE OF FOUNDATION.
3. UTILITIES LOCATIONS SHALL BE VERIFIED IN THE FIELD PRIOR TO CONSTRUCTION.
4. VILLAGE TO RELOCATE EXISTING STREET SIGNS FROM LIGHT POLES TO BE REMOVED.



SEE SHEET 14
MATCHLINE B



DATE PLOTTED = 7/15/2023 12:38:35 PM
PLOT TABLE = \\NAS\standards\CAD\Bentley\standards\11-001\plotting\CCI-PDF-plc1c1g
FILE NAME = \\NAS\standards\CAD\Bentley\standards\11-001\plotting\0021672101-ant-11g201.dgn



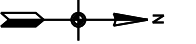
USER NAME = untitled	DESIGNED - DTJ	REVISED -
	DRAWN - DTJ	REVISED -
PLOT SCALE = 40,0000' / in.	CHECKED - JMV	REVISED -
PLOT DATE = 7/15/2023	DATE - 7/14/2023	REVISED -

**SCHOENBECK ROAD
STREET LIGHTING
VILLAGE OF MOUNT PROSPECT, ILLINOIS**

PROPOSED LIGHTING PLAN			
SCALE: 1" = 20'	SHEET NO. 1 OF 4 SHEETS	STA.	TO STA.

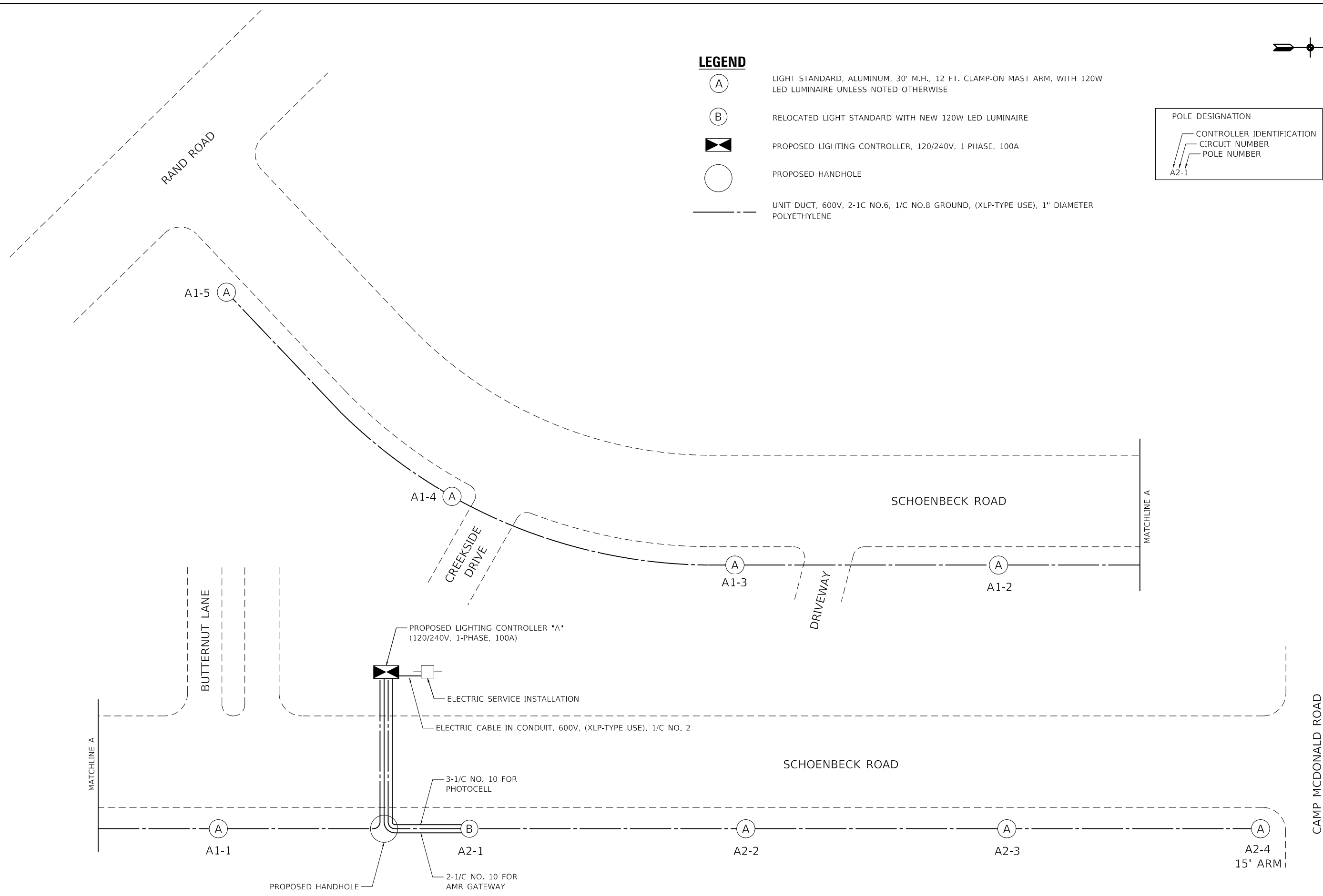
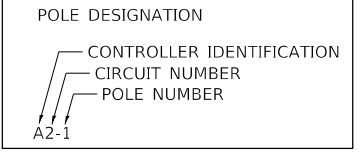
RTE.	SECTION	COUNTY	TOTAL SHEETS	SHEET NO.
		COOK	16	15

ILLINOIS FED. AID COUNTY PROJECT



LEGEND

- (A) LIGHT STANDARD, ALUMINUM, 30' M.H., 12 FT. CLAMP-ON MAST ARM, WITH 120W LED LUMINAIRE UNLESS NOTED OTHERWISE
- (B) RELOCATED LIGHT STANDARD WITH NEW 120W LED LUMINAIRE
- ⊠ PROPOSED LIGHTING CONTROLLER, 120/240V, 1-PHASE, 100A
- PROPOSED HANDHOLE
- UNIT DUCT, 600V, 2-1C NO.6, 1/C NO.8 GROUND, (XLP-TYPE USE), 1" DIAMETER POLYETHYLENE



DATE PLOTTED = 7/15/2023 12:38:44 PM
 PEN TABLE = N:\Projects\18021672\01_0821672.tbl
 PLOT CONFIG = N:\S:\standards\CAD\layouts\standards.dwg
 FILE NAME = N:\VPROJ\18021672\01_CAD\Lighting\18021672.dwg



USER NAME = untitled	DESIGNED - DTJ	REVISED -
PLOT SCALE = 40.0000' / in.	DRAWN - DTJ	REVISED -
PLOT DATE = 7/15/2023	CHECKED - JMV	REVISED -
	DATE - 7/14/2023	REVISED -

**SCHOENBECK ROAD
 STREET LIGHTING
 VILLAGE OF MOUNT PROSPECT, ILLINOIS**

SINGLE LINE DIAGRAM			
SCALE: N.T.S.	SHEET NO. 1 OF 1 SHEETS	STA.	TO STA.

RTE.	SECTION	COUNTY	TOTAL SHEETS	SHEET NO.
		COOK	16	16

ILLINOIS FED. AID PROJECT