



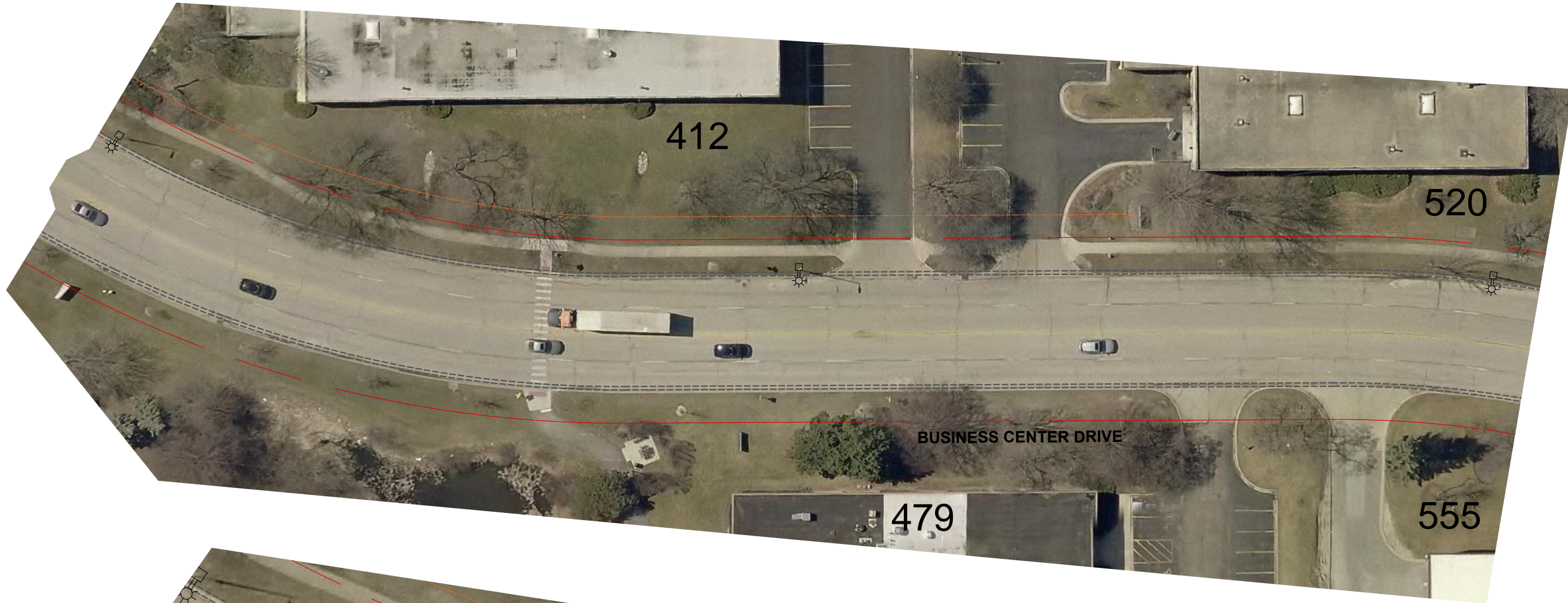
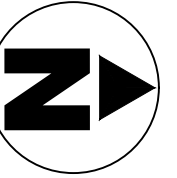


LEGEND





-  PERMANENT EASEMENT
-  TEMPORARY EASEMENT
-  EXISTING ROW
-  EXISTING UTILITY EASEMENT

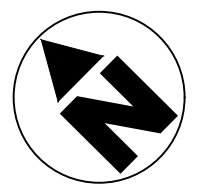
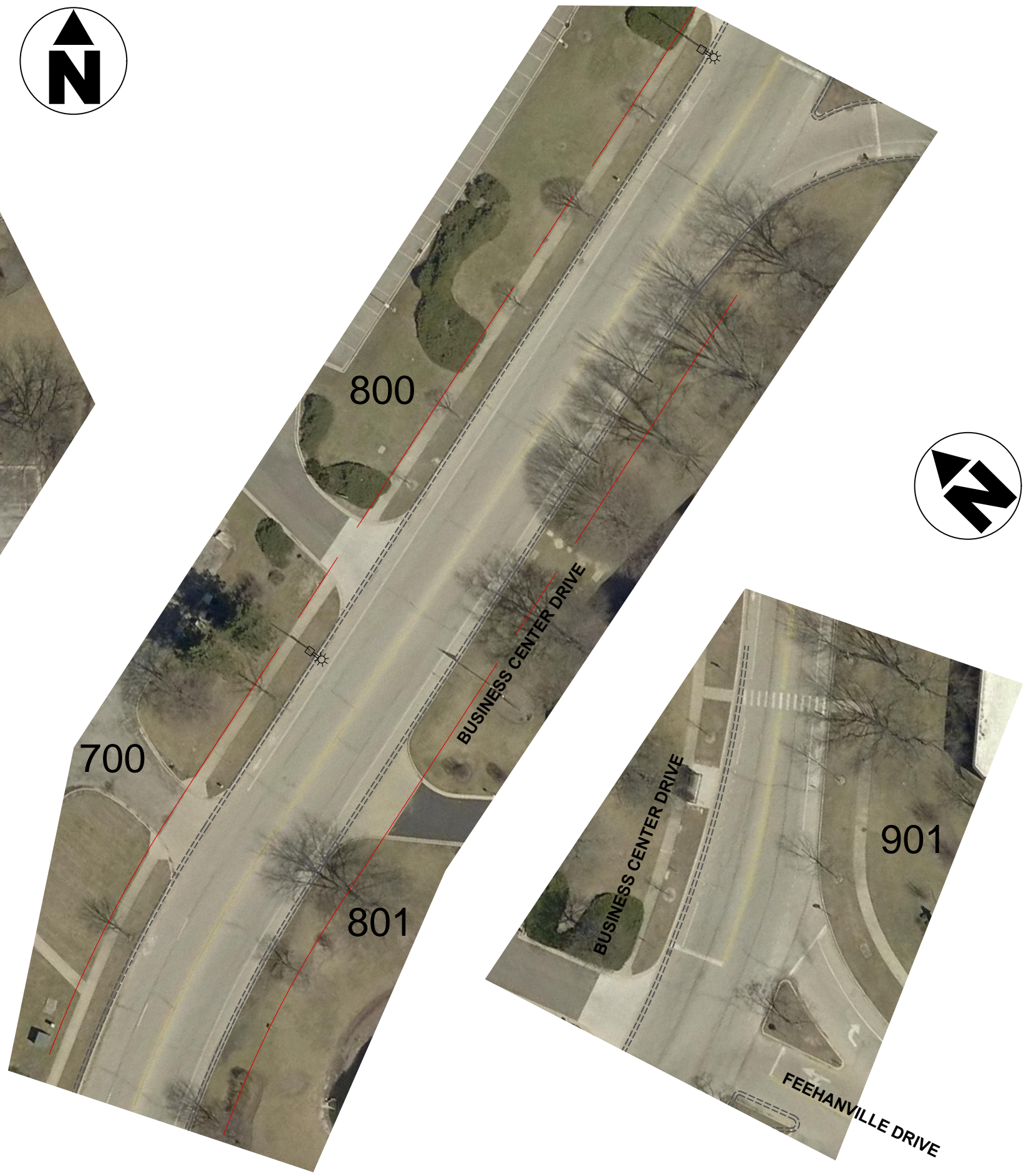
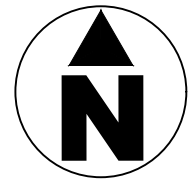
H:\Engineering\Traffic\calming\business center\2023 Project\CAD\Business Center Drive Public Exhibits.dwg



ISLAND DETAIL

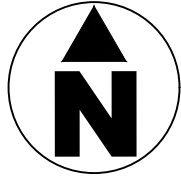
LEGEND





-  PERMANENT EASEMENT
-  TEMPORARY EASEMENT
-  EXISTING ROW
-  EXISTING UTILITY EASEMENT



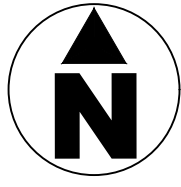
LEGEND	
	PERMANENT EASEMENT
	TEMPORARY EASEMENT
	EXISTING ROW
	EXISTING UTILITY EASEMENT

H:\Engineering\Traffic\calming\business center\2023 Project\CAD\Business Center Drive Public Exhibits.dwg

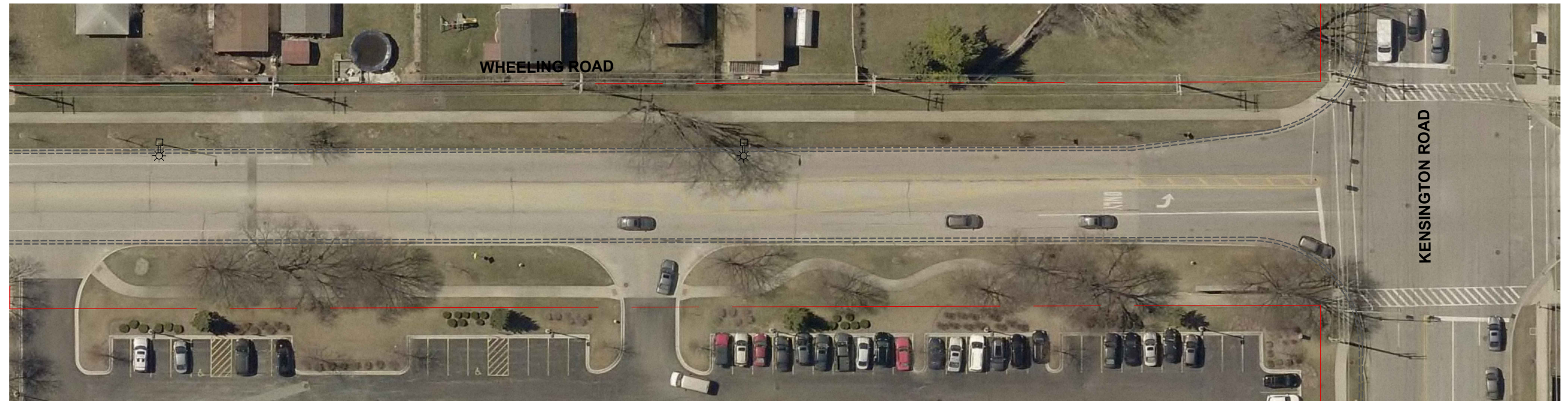


LEGEND	
	PERMANENT EASEMENT
	TEMPORARY EASEMENT
	EXISTING ROW
	EXISTING UTILITY EASEMENT

H:\Engineering\Traffic\calming\business center\2023 Project\CAD\Business Center Drive Public Exhibits.dwg



705 707 709 711 713 715 717







701

703

705

LEGEND

-  PERMANENT EASEMENT
-  TEMPORARY EASEMENT
-  EXISTING ROW
-  EXISTING UTILITY EASEMENT



VILLAGE OF
Mount Prospect

• **Public Works Department**

Engineering Division

BUSINESS CENTER DRIVE EXISTING CONDITIONS

Design : LJF

Date: 2-23-23

Scale: 1:50

Sheet:

Drawing: LJF

County: Cook

5 of 5