



Village of Mount Prospect **Press Release**

CHANGES COMING TO MAPLE STREET COMMUTER PARKING LOT

DATE: May 24, 2019
CONTACT: Jason Leib, Deputy Director of Public Works
PHONE: 847/870-5640

Construction of the Maple Street Lofts mixed-use development in downtown Mount Prospect will impact the availability of the Maple Street Commuter Parking Lot. The Village of Mount Prospect would like to ensure that commuters are aware of all of the parking options available to them.

Closing of the north half of the Maple Street Lot Begins JUNE 1, 2019. Alternative parking is available to commuters in the interim while the Maple Street Parking Deck is being constructed.

Mount Prospect commuters that use the Maple Street Parking Lot may park via permit or daily fee in:

- South portion of the Maple Street Lot
- Lions Park Parking Lot
- On-street along the north side of E. Prospect Avenue

These lots/spaces are restricted to Mount Prospect residents only.

Additional commuter parking options include:

- EMERSON STREET PARKING DECK
 - Between Village Hall & Library
 - Offers 50 permit-only parking spaces for Mount Prospect residents at a reduced fee (valid at Emerson Street Deck only)
 - Out-of-town commuters are permit-only at full fee
- EAST AND WEST COMMUTER LOTS
 - Open to any commuter, daily fee or permit
 - Tends to fill the fastest in the a.m.

- MORE -

Visit www.mountprospect.org/easypark to view details and to download a parking permit application. Applications may be mailed to or dropped off at Public Works [1700 W. Central Road] or Village Hall [50 S. Emerson Street].

Commuters who do not wish to utilize permit parking may pay for their daily fee space via the pay stations or the WHOOSH! mobile app. The app allows commuters to skip lines and pay in their car or on the train. The app can be downloaded at www.whooshstore.com.

The availability of parking during the construction of the Maple Street Parking Deck (2019-2020) includes a total of 319 resident-only spaces and 333 spaces open to any commuter. There is more parking available to commuters in 2019 than existed at the end of 2018.

POST-CONSTRUCTION

The Maple Street Parking Deck is expected to open by end of summer 2020. The deck will have 285 parking spaces of which 222 will be restricted to Mount Prospect resident commuters.

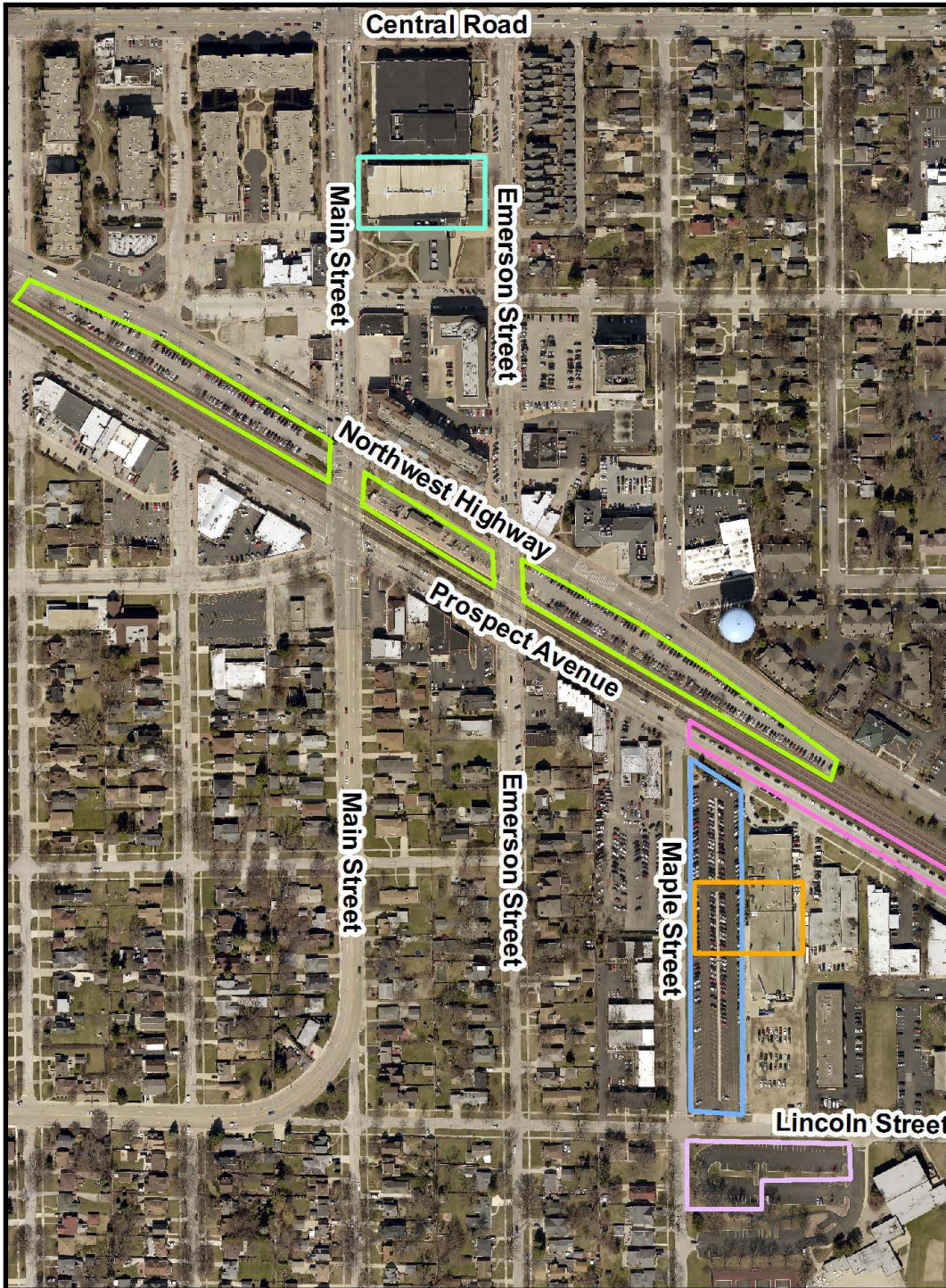
After the opening of the Maple Street Parking Deck, there will be a total of 668 commuter parking spaces available downtown – 37 more than in 2018. 335 of these spaces will be restricted to Mount Prospect residents only.

Contact Public Works at 847/870-5640 for questions about commuter parking options.

About Maple Street Lofts







The Maple Street Lofts is a mixed-use transit-oriented development on a six-acre downtown site. The proposed Planned Unit Development is 14,000 SF of retail/restaurant/entertainment uses and includes a mix of both luxury apartments and single-family attached rowhomes. It will also include 268 structured parking spaces in a Village-owned public parking garage. Information about this project, including the Maple Street Parking Deck, is available at www.mountprospect.org/MapleStreetLofts.

#####



Village of Mount Prospect Commuter Parking

Created by: Jason C. Shallcross, AICP
Community Development

-  East and West Commuter Lots
-  Emerson Street Parking Deck
-  Lions Park Parking Lot
-  Maple Street Parking Lot
-  Maple Street Parking Deck (future)
-  Prospect Avenue On-Street Spaces



1 inch = 400 feet

